

# TEACHER STRIKE IS SETTLED

The first thing the Chelsea Education Association and the Board of Education wanted to do yesterday was announce a settlement. The next order of business was to catch up on lost sleep.

Chelsea students returned to school today (Thursday), after three days of a teachers' strike. Negotiators Leonard Solomon, of the CEA, and Charles Cameron, for the board, faced each other over the long table in the board room, Wednesday, officially for the last time this year. The agreement they had been seeking for eight months was achieved by the middle of the afternoon.

The new contract, which expires June 30, 1974, covers both the present school year and the 1973-74 session.

It gives the teachers a 4.8 percent salary hike the first year, and a 4.5 percent raise the second. Beginning teachers at Chelsea schools now earn more than their counterparts in all surrounding rural school districts except Dexter. There, beginners with BA's take home \$8,177 instead of Chelsea's \$8,175.

The new contract stipulates maternity and general leave poli-

cies as suggested in the fact finder's report. The school district will pay the full health insurance premium for its employees, based on the maximum Blue Cross figure, another fact finder recommendation.

The bugaboo with which negotiators wrestled the last five days is handled with a simple statement: Chelsea teachers will have two planning periods of a class period length each day.

Appended to this statement is a letter of understanding. It states that the CEA and the board agree that Beach Middle school will retain its 1972-73 period schedule, a seven-period day, next year. Teachers instruct during five of those 50-minute sessions. Two periods are for planning.

The letter prescribes that an ad hoc study committee, composed of representatives from administration, teachers, and community, will decide the high school's period schedule for next year.

The teachers and the administration will choose their representatives. The citizens will be picked in a drawing. One will be taken from a hat full of the teachers' nominations, an-

other from the administration's nominations, and the third from the combined pile.

The conclusions of the committee will be submitted to the board to be implemented as the board sees fit. Thus will the number of classes a teacher conducts next year be determined.

This was the unresolved issue that remained between the CEA and the board since Friday night. The teachers hoped to retain the present seven-period schedule, while the board wanted a contract that allowed a flexible schedule with periods of varying lengths. Under such a system, the teachers would not be putting longer hours in front of the class, but they might have to teach more than five classes a day.

The battle lines were drawn, even while negotiators met far into the night. Picketing teachers ignored the drizzle Monday morning, choosing to make their point rather than stay dry. The strike became official when all but 24 of 123 teachers stayed away from the classrooms. Only one teacher reported at Beach Middle school.

The board decided, Monday night, to invoke the Hutchinson

Act, which allows the dismissal of public employees who participate in an illegal strike. They planned to fire teachers remaining on strike Monday.

If there had been no compromise, only capitulation or a court injunction instituted by a citizen group could have defused the time bomb. The injunction would have either sent the teachers back to school or stopped the board from firing its staff.

The deadlock came in the wake of the fact finder's report, which some thought a panacea. Instead, it proved a Pandora's box.

When the board decided not to abide by its recommendations, the CEA, "frustrated and disappointed," voted to strike. If a tentative settlement had not been achieved by Monday, Jan. 22.

The week-end negotiations, marathon meetings melting into Monday's early hours, resolved little, and brought new issues to the foreground.

Negotiators met Friday, presumably to discuss three aspects of the fact finder's report which remained unacceptable to the board: the salary schedule, a job jeopardy clause, and the maternity leave policy.

Almost immediately, the negotiations took a new turn. Both parties admitted an interest in a two-year contract. This meant they would consider salaries and conditions for 1973-74, as well as for the present school year.

Contract negotiations last simply revolved around the board's demand to increase the number of periods per day, while decreasing the amount of time each student spends in each class.

The teachers argued that shortened periods and the added work load would decrease the amount of time a teacher could devote to each student. The CEA objection to the schedule change was "It's educationally unsound."

The board maintains that an eight-period day was never part of their final proposal. "Teaching six periods out of eight was merely an example," stresses Board President William Storey. The board offered two planning periods of an unspecified length. Currently, the teachers are guaranteed two 50-minute planning periods a day.

Superintendent Charles Cameron explains, "As long as the teachers must have two 50-minute planning periods a day, we cannot alter the seven-period

CEA said, "The board is insisting that the Middle school and the High school day consist of eight periods rather than seven as is presently taught."

Said Miss Diann L'Roy, CEA president, "That's the only issue of any consequence; it simply revolves around the board's demand to increase the number of periods per day, while decreasing the amount of time each student spends in each class."

The teachers argued that shortened periods and the added work load would decrease the amount of time a teacher could devote to each student. The CEA objection to the schedule change was "It's educationally unsound."

The board maintains that an eight-period day was never part of their final proposal. "Teaching six periods out of eight was merely an example," stresses Board President William Storey. The board offered two planning periods of an unspecified length. Currently, the teachers are guaranteed two 50-minute planning periods a day.

Superintendent Charles Cameron explains, "As long as the teachers must have two 50-minute planning periods a day, we cannot alter the seven-period

schedule. We would like to construct a flexible schedule in which some periods are longer than others."

Robert Schafer, a board member, explains that a schedule change would in effect add classrooms to the school system. "If you use 50 classrooms seven periods a day, instead of six periods a day, you get 50 more classroom situations per day."

The board argues that more teacher - pupil periods equals more education. Of course, an altered schedule would mean shorter classes during the 8:15 a.m. to 3:30 p.m. day. Classes can be no shorter than 40 minutes according to North Central accreditation standards.

The board points out that none of Chelsea's rural neighbors offer their teachers two planning periods a day. And all but Dexter offer the beginning teacher less than the board's last offer.

Chelsea teachers admit that their starting salaries are competitive. They argue that the more advanced teachers are underpaid.

The teachers say that the board offers misleading figures. "We don't put in more hours, but we have larger classes," ob-

serves one Chelsea teacher. He also stresses that increasing the number of classes would be a strain on the students, as well as the teachers. "In the junior high, it is especially unreasonable since the students have no study halls."

President Storey says: "We are merely asking our teachers to act as professionals; to do a job comparable to their neighbors." The Chelsea teachers think they are doing a better job than their neighbors. "Just look at the results of the Michigan Assessment tests," several say.

Leonard Solomon, chief negotiator for the CEA, explained that they turned down the board's last offer Sunday, because, "An extra class of teaching a day was unacceptable to the CEA membership." Even though the board offered the six out of eight-period schedule as only an example, the CEA believed that arrangement was implicit in the last offer.

Both sides held fast to hope for a speedy settlement. They met again Tuesday night from 9 p.m. to 2:30 a.m. "New channels of communication were opened then," said Miss L'Roy. (Continued on page six)

## WEATHER

	Min.	Max.	Precip.
Wednesday, Jan. 17	35	55	0.00
Thursday, Jan. 18	44	58	0.02
Friday, Jan. 19	32	50	0.01
Saturday, Jan. 20	32	46	Trace
Sunday, Jan. 21	19	38	Trace
Monday, Jan. 22	34	45	0.14
Tuesday, Jan. 23	31	35	0.02

By H.K.L.

# The Chelsea Standard

## QUOTE

"To tread no eye, and to suspect no tongue, is the greatest prerogative of innocence."

—Samuel Johnson.

ONE HUNDRED-THIRD YEAR—No. 32

14 Pages This Week

CHELSEA, MICHIGAN, THURSDAY, JANUARY 25, 1973

15c per copy

SUBSCRIPTION: \$4.00 PER YEAR

## Dr. M. Papo Granted Jaycee Service Award

The Jaycees' search for a distinguished citizen zeroed in on a man who had been nominated several times before; a man who had once asked not to be nominated, Dr. Michael Papo.

He was surprised and honored at a banquet at Fireside Inn, Tuesday evening. He was given a standing ovation by Chelsea Jaycees and their bosses, the other honored guests that night.

"To enumerate Dr. Papo's many contributions to the community would, indeed, take a long and lengthy form," commented Dr. William Hawks, who nominated Papo.

Many feel it was Papo's energy and foresight alone that developed the Medical Center into the nationally known institution of medical care it is today. The center is considered a prototype for future centers in other areas of the country. In some circles, Papo's brain child put Chelsea on the map.

Dr. Papo and Dr. James Botsford started medical practice in Chelsea in a converted store on Main St. The practice grew, blossoming into the Medical Clinic in 1967. In 1970 the Extended Care Facility was added, and a new addition is planned for this spring.

Dr. Papo was born in Yugoslavia and studied medicine in Rome. His studies were cut off by the war. In 1952, Papo came to the U. S. where he resumed his studies at Wayne State University. There, he obtained his Bachelor of Science Degree. Upon graduation, he entered the University of Michigan School of Medicine where he finished his medical education.

Dr. Papo was lured to "Bosses Night" under false pretenses. He was not to know of the honor until it was announced. The evening also marked National Jaycee Week.

## Community Chest Elects New Officers

The many reins of Chelsea's Community Chest fell into new hands Jan. 17, when board of director and officer elections were held. Robert Thornton turned over the presidency to Conrad Hafner, who will lead the 1973 programs.

The new vice-president, replacing Hafner, is Paul Frisinger. Norma Popovich takes the treasurer's books and head-aches from Mrs. Donald Baldwin. The new secretary, Jim Hoffmeyer, succeeds Mr. Art Steinaway.

The board needed to elect seven new board members for three-year terms, but only six were found. They are: Pat Dittmar, Lloyd Grau, Homer Kuhl, Jack Barnes, Arlene Bareis, and Bob Gaiser. The seventh will be elected at the February meeting.

The new members join a number of veteran board members who are in the process of completing their three-year terms. They are: Claude Arnett, Earl Klemer, Roy Greenleaf, Robert Kozma, James Liebeck, Mrs. Jerry Satterthwaite, Mrs. Timothy Whitesall, Mrs. Art Steinaway, M. A. Bowen, Robert

(Continued on page three)



INTERIOR DECORATING, carpentry, some yard work, and lots of cleaning kept these Youth Center workers busy last week-end and on through the week. With the help of OEO counselor Mary Jan O'Hare, the high school students are creating an activity center out of the Methodist church's former parsonage. "We need every-

thing from kitchen utensils to material for drapes," says Mary Jan, "and we really want kids to drop in." Working at the center Monday were, from left: Gina Cotterman, Mary Jan O'Hare, the OEO counselor, Dennis Cosgrove, Kevin Passow, Steve Worden, and Jill Peterson.

## Varsity Cagers Drop 2 More Close Games Over Week-end

Chelsea varsity cagers dropped two more games last week-end. It was a tussle with Milan Friday night, in which victory slipped by the Bulldogs in the last minutes of play.

Defeat appeared more imminent throughout Saturday's game. The Flying Dutchmen sailed home just ahead of Chelsea, 71-69, having never relinquished the lead.

Friday's thriller began with a Chelsea advantage built on Tim Treado's four buckets. The Bulldogs began the second quarter with a 14-10 lead, but fell behind, 32-29, by halftime. It was Rick Miller, John Mann and Tim Treado

who kept Milan's edge as narrow as it was.

Miller led both the scoring and the rebounding, while Mann followed with five points. Treado deflected eight rebounds.

In the third quarter, the blue and gold team tied it up and then began to inch ahead, accumulating a seven-point margin. But by the end of the hard fought period, Milan had narrowed the gap to two.

Miller, Bruce Guster, and Jeff Daniels led the third-quarter surge with six points each.

Chelsea's 47-45 lead quickly evaporated in the final period. The two teams were neck and neck until Milan poured it on in the last three minutes of play. They rushed from 53 to 64, leaving Chelsea in their wake, with 53. In the meantime, Tim Treado, Jeff Daniels, and Bruce Guster had fouled out of the game.

Tim Treado was the leading scorer against Milan. His 16 points were backed by 12 each from Bruce Guster and Rick Miller. Miller did his stuff on the backboards, too. He was responsible for 18 rebounds.

Mike Smith led Milan's assault with 24 points, 11 coming in the last period. Stan Joplin added 17 points. Smith was also the leading rebounder, rounding up 23.

It seemed as if Manchester were playing two completely different teams Saturday night. First, there was a lethargic, uninspired group which trailed Manchester, 43-28, at the end of the first half. The team that played the second half was a pack of a different temperament.

Manchester jumped out to a first period lead of 18-13, propelled by Brad Roberts and Steve Bach. Chelsea's spark was Jeff Daniels who pitched in seven of Chelsea's 13 points.

(Continued on page three)

## Bible School Symphonettes To Appear Here

The Symphonettes of the Grand Rapids School of the Bible and Music will present a musical concert at Chelsea Baptist church on Jan. 28, at 7 p.m.

The Grand Rapids School of the Bible and Music is a technical training institute offering a concentrated education in the Bible.

Recently the school acquired a new campus located at 1331 Franklin S.E. in Grand Rapids. This campus has enlarged the potential of the school so that there is much room for growth in the future.

The group, directed by Miss Betty Harris, is composed of young ladies from six states. A variety of sacred music will be presented in their one-hour concert.

The public is invited to attend. There is no admission charge.

## No Number Please Now On Toll Calls

After Jan. 27, Chelsea one and two-party telephone customers will no longer hear "May I have your number, please," from the operator when dialing their own long distance calls.

That's when Michigan Bell converts Chelsea to the new Automatic Number Identification system (ANI) at 12:01 a.m. Sunday, Jan. 28.

Local Michigan Bell manager Harry Kenworthy said the new service will automatically record the number dialed, the length of the call and the number of the calling party, all without the assistance of the operator.

(Continued on page three)

## J. Kuhl Injured in Crash With Deer

Jerry Kuhl, the son of Mr. and Mrs. Armin Kuhl, suffered pulled muscles and whip lash when his car and two deer collided early Monday morning.

He was on his way to work, along Scio Church Rd. east of Suttons Lake, when the animals darted into his path. The impact caused him to lose control of his vehicle which then slammed into a tree.

The car was extensively damaged. The OEO project was first bogged down with attempts to get county funding. Once that was achieved, it was difficult to find a suitable location for the center.

OEO faced some resistance from residents who feared such a center would attract out-of-towners. An answer to that objection was ready; only Chelsea School District students are eligible for the many center activities.

Mary Jan and her band of enthusiastic high school helpers got their first glimpse of the new center Friday. Clean up activities started Saturday. Even more students, putting the strike "holiday" to good use, arrived Monday.

The old parsonage is equipped only with a few drapes, according to Mary Jan. "In other words, we can just about use everything we get," piped in Gina Cotterman, a student OEO advisory board member.

## Youth Center Being Started in Ex-Parsonage

After a year of set-backs, legal hassles and disappointments, the Chelsea Youth Center is becoming a reality. "We finally have the key in hand," says Mary Jan O'Hare, teen counselor at the new center.

The lease, turning the old United Methodist church parsonage over to the Office of Equal Opportunity Advisory Board, was signed by the church and Washtenaw county officials Wednesday, Jan. 17. With that, "Equinox" can not be far behind.

The OEO project was first bogged down with attempts to get county funding. Once that was achieved, it was difficult to find a suitable location for the center.

OEO faced some resistance from residents who feared such a center would attract out-of-towners. An answer to that objection was ready; only Chelsea School District students are eligible for the many center activities.

Mary Jan and her band of enthusiastic high school helpers got their first glimpse of the new center Friday. Clean up activities started Saturday. Even more students, putting the strike "holiday" to good use, arrived Monday.

The old parsonage is equipped only with a few drapes, according to Mary Jan. "In other words, we can just about use everything we get," piped in Gina Cotterman, a student OEO advisory board member.

The workers are hoping Chelsea residents will donate useable furniture, lamps, and material to make the house into a comfortable gathering place. The staff will be glad to pick up unwanted, usable objects. "If we can't use it," says Mary Jan, "We'll get rid of it for them. I bet we can use it," she concludes with emphasis.

Contributors may bring items to the parsonage at 140 Park St., or call the center.

Once the parsonage is equipped, hopefully within the next three weeks, the staff will hold a grand opening. The workers envision that event as the first of many activities at the center.

One of the first teen center projects will be a teen-age employment agency, a "rent-a-kid service" which can be tapped by those looking for temporary or permanent help that could be supplied by teen-agers.

The OEO tutoring program, which brings college students to tutor Chelsea school children, will also be conducted at the center, along with weekly "rap sessions" with the counselor and staff.

Mary Jan says they also hope to build a library and a magazine collection for a reading room in the parsonage, but that too depends on contributions. A pool table has been donated which they may be able to cover with a table tennis top for a variety of sport at the center.

(Continued on page three)



DR. MICHAEL PAPO, Jaycee Distinguished Service Award winner, accepts his plaque from Dorothy Miller, last year's recipient because of her volunteer work at the Medical Center. The couple is flanked by Walt Brown (left), Jaycee National Director, and Mike Eubanks, local chapter president.



GOOD-HEARTED GIVING was encouraged by the presence of Chelsea boys downtown, Saturday. Mark Bucholz (left) and Jon Oesterle, pictured here, are greeting Lina Brown and Connie Connelley with a request to give to the March of Dimes.

Mrs. Ray Canine (far right) is the member of the Chelsea's March of Dimes committee responsible for getting the boys on the streets with buttons, pretzels, and balloons.



# Uncle Lew from Lima Says:

## DEAR MISTER EDITOR:

One of the truck drivers that delivers stuff to the country store was running late Saturday night. He said his old lady weren't going to believe he had a flat tire, so he might as well have a pop and relax afore going home. He got to talking about changes in the driver's license test, and the feller got on a discussion of words and sign language.

The truck driver said he had saw where several states is changing their license test to try and make questions clearer understood. He said he was strong in favor of the change. He said he had been driving a truck under all conditions 23 year, and ever time he went for a license check he got bum-fuzzed by the questions. He said the states is trying to get one system of traffic signs and lights for the hole country, and trying to get their license tests uniform was in line with all the traveling between states folks do nowadays.

Actual, allowed Ed Doolittle, driving ain't so bad out in the country, but on the super roads where they got six lanes each way and one on each side to pick up the pieces you got to have nerves of steel to survive. Ed said it weren't no reflection on the truck driver, but he had saw where this university studied drivers two year and decided the best driver was a moron that don't see good. This way, Ed said, not having much mind and eyes to use, he concentrates harder on using em. A smarter feller would have a little bit of his mind on his driving, and the rest on the gal in the car behind him and the sale he wants to make in the next town.

Practical speaking, declared Clem Webster, if they is a problem bigger than traffic in this country is sitting out of garbage, junk and the rest of our waste. And there is a lot of sign trouble in this area. Bug said, he had saw where this feller had been charged with dumping his garbage along the road. The feller said he done it, but he said he read the sign posted at the place where everybody had been dumping, and the sign said "No Dumping Violators Will Be Prosecuted." He figured if they weren't going to prosecute no violators he might as well dump, so he did. Clem said the states had ought to get together on putting some punctuation in them signs they're trying to get uniform.

Another matter the states could get together on, broke in Bug Hookum, is lotteries that some of em got. Newspapers and magazines that depend on the mail can get in trouble carrying stories about lotteries, even in states where they're legal. For instant, Bug said he had saw where federal law won't let papers that toll about legal lotteries to go through the mail.

Sometimes it's hard to see the reason in rules, said Bug, but he said he never has understood how you can sell cigarettes but you can't advertise em, and how you can sell firecrackers, in some states, but you can't fire em.

Yours truly,

Uncle Lew.

## Increase in Area Housing Reported

A recently released report by the Southeast Michigan Council of Governments shows net increases over 1971 in the number of dwelling units in area townships and villages.

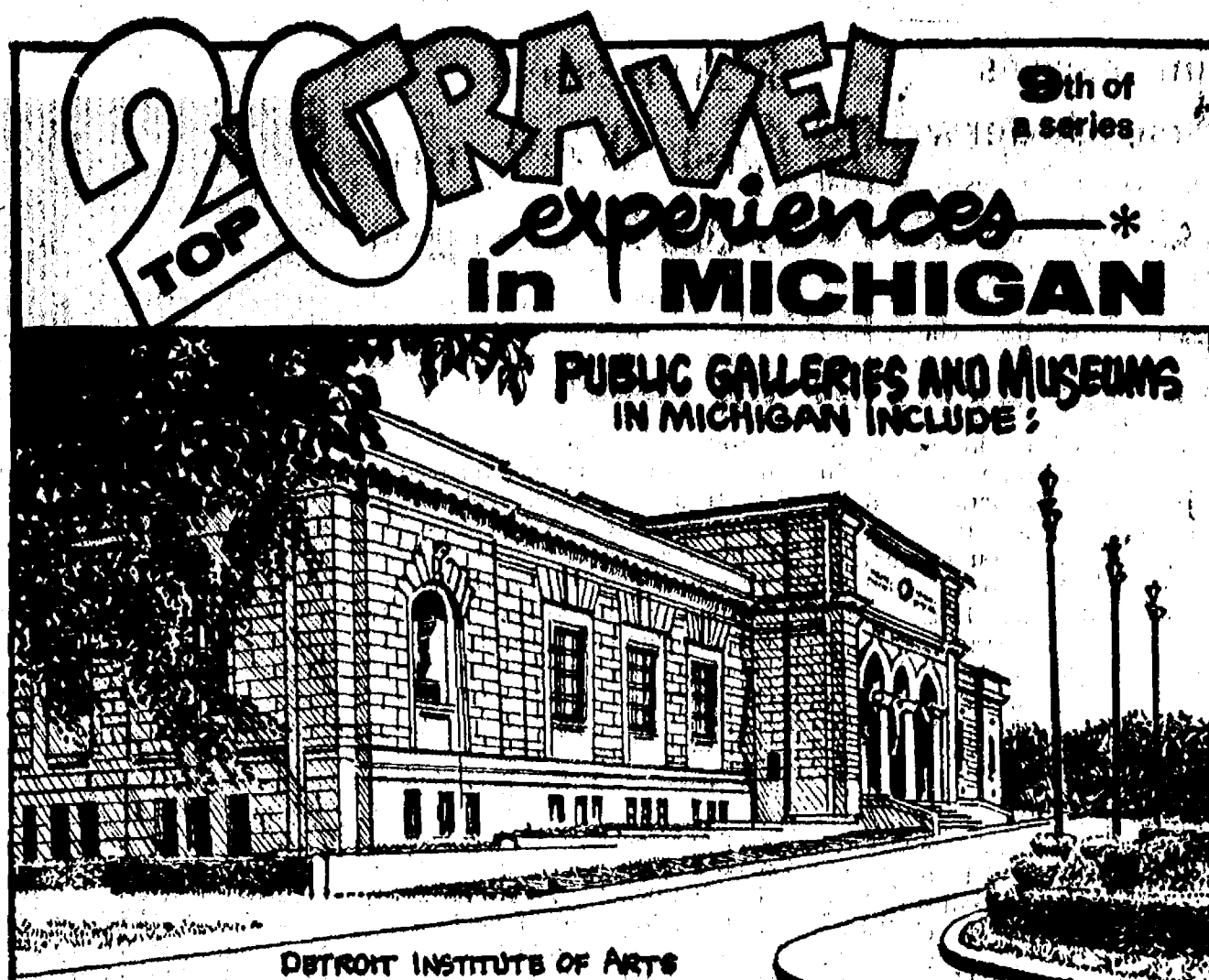
The Southeast Michigan Dwelling Units Report is based on the number of residential building permits issued in the first six months of 1972. The increase in housing unit authorizations for southeast Michigan was 3,094 units above the same period in 1971. Of this total increase, nearly half of the increased authorizations were in Livingston, Monroe, St. Clair, and Washtenaw counties.

In Washtenaw county, the village of Dexter gained six detached single family units and 11 multi-family units. Chelsea gained only seven single family units. Permits were issued for 20 single family and 15 multi-family dwelling units in Dexter township. Scio township gained 17 single family units. Single family units in Lima township numbered 12 over 1971. Lima also gained eight multi-family units. Lyndon township gained 13 single family and 18 multi-family units. Permits for nine single family units were issued in Sylvan township, as well as for 10 multi-family units. Webster township increased by 30 dwelling units, 22 of them single family dwellings and the remainder multi-family units.

None of the areas reported issuing permits for construction of two-family units or demolition of dwellings.

Washtenaw county over-all gained 632 single family, 60 two-family, and 1,263 multi-family units for gross total of 1,945 dwelling units. However, 37 demolitions brought the increase down to 1,908 units.

Leftover egg yolks and whites may be refrigerated in covered jars. Whites will keep, cold and covered, about 10 days. Yolks should be covered with cold water when stored and used within two, or three days.



THE DETROIT INSTITUTE OF ARTS; ALBION COLLEGE; ALMA ARTS AND CRAFTS CENTER; JESSE BESSER MUSEUM; ALPENA; THE UNIVERSITY OF MICHIGAN MUSEUM OF ART; BATTLE CREEK CIVIC ART CENTER; CRANBROOK ACADEMY OF ART GALLERIES; BLOOMFIELD HILLS; MCGREGOR MEMORIAL COMMUNITY ARTS GALLERY; WAYNE STATE UNIVERSITY; DETROIT; KRESGE ART CENTER GALLERY; MICHIGAN STATE UNIVERSITY; EAST LANSING; FLINT INSTITUTE OF ARTS; GRAND RAPIDS ART MUSEUM; KALAMAZOO INSTITUTE OF ARTS; MIDLAND ART COUNCIL; MIDLAND CENTER FOR THE ARTS; THE ART CENTER, MT. CLEMENS; HACKLEY ART MUSEUM, MUSKEGON; ARMSTRONG MUSEUM OF ART AND ARCHEOLOGY, OLIVET; MUSEUM OF ART AND HISTORY, PORT HURON; OAKLAND UNIVERSITY ART GALLERY, ROCHESTER; SAGINAW ART MUSEUM; ELLA SHARP MUSEUM, JACKSON

## MICHIGAN MIRROR

by Elmer E. White, Secretary, Michigan Press Association

### State Police Recruit

Increasing the number of minority group members in its ranks is the goal of a recruiting drive underway by the Michigan State Police.

The state police, widely recognized as one of the nation's finest, has been under fire in recent years because of the almost complete absence of minority group members in its ranks. At one point, the Michigan Civil Rights Commission ordered it to not hire any more white applicants until it had achieved a racial balance similar to the state at large.

The organization still has a long way to go: it has 1,896 men at present and only 20 of those belong to a "major" minority group. Thirteen of these are black, a percentage of less than 1 percent, despite the fact that 11 percent of the state population is black.

The all-white makeup of the force was by no means a policy of exclusion of minority groups, though civil rights groups can point to cases 20 years ago when a black applicant was told not to bother because of his skin color. The situation in recent years exists more because the department hasn't actively recruited new troopers. The State Police dealt with people who did apply rather than recruit anybody. Since its ranks were virtually all white and since most applicants came in from the same areas as other troopers, almost no minority group members applied.

Change has been slow, but it is coming. Of the 13 black state policemen, five were in the most recent class of recruits.

"We've intensified our efforts to recruit minority group members and we've launched a real hard-core promotional campaign that hopefully will appeal to Blacks, Mexican-Americans, Indians — all groups that might be interested and qualified to apply," explains Col. John R. Plants, Director of the State Police.

"We have 27 recruiters in the field and a specially assigned coordinating section within our personnel office," he says. "We are contacting various minority community groups, and recruiters appear at public events and colleges and universities."

"I'll always be interested in attracting men from minority groups, but only on the same basis as we look for all qualified applicants. All our applicants are given the same screening, the same tests and qualified in the same manner. "It's imperative that we bring in more minorities so long as it's on an equal opportunity level."

### Probate Revamp Urged

A less glamorous, but highly important issue now being pushed in the new legislative session is a complete revamping of Michigan's probate laws as proposed by Sen. Robert Richardson, R-Saginaw.

Richardson introduced the bill in 1972, too late to secure action in

both houses on such a complex issue, so it had to wait until this year. It has 27 sponsors altogether in the 38-member Senate, which should guarantee its passage there.

## State of the State Focuses on 'Good' Michigan Economy

Lansing—Governor William G. Milliken's annual "State of the State" message to the legislature said Michigan's current situation is "generally good." Said the Governor:

"More people are employed in Michigan than ever before."

"Personal income is at an all-time high."

"An improving economy and improved management practices will permit us to end the fiscal year with a substantial (state treasury) surplus."

The Governor proposed reductions in property taxes and income taxes paid by individuals, and Corporate Franchise Taxes and Intangible Taxes paid by business.

He focused on needed steps, many of them Michigan Department of Commerce - oriented, to enhance Michigan's economic health.

"Even though about 93 percent of our work force is employed, we need more jobs in Michigan," Milliken said. "We need to care enough, both in the public and private sectors of our economy, to do whatever is necessary to place every person in a job who is capable of working and willing to work."

"An expanding economy means expanded job opportunities," the Governor said.

"As a result of our action last year, we are now in the midst of an accelerated program designed to encourage business expansion in Michigan, and increased sales of our products outside of Michigan, including overseas."

Specifics of the Governor's program will be spelled out in future messages and proposals, he said.

## Humane Society Forms Public Relations Committee

The Board of Directors of the Humane Society of Huron Valley have formed a Public Relations Committee designed to improve its communications, inform the public of services available, field problems and make appropriate referrals, and obtain suggestions toward their goal of alleviating problems affecting animals in Washtenaw county.

For further information call 971-0112 (between the hours of 9 a.m. and 9 p.m.), or write Humane Society Public Relations Committee, 2595 Seminole, Ann Arbor 48104.

## MEET YOUR FRIENDS AT INVERNESS INN

Your Innkeepers: Matt and Marge  
OFFICIAL SALES AGENT FOR MICH. STATE LOTTERY TICKETS  
13996 North Territorial Rd. - North Lake

YOUR FAVORITE MEALS  
SHRIMP, CHICKEN & FISH DINNERS

BEER - WINE - LIQUOR PIZZAS  
LUNCHEON SPECIALS

## JUST REMINISCING

Items Taken from the Files of The Chelsea Standard

### 4 Years Ago...

Thursday, Jan. 23, 1969—

Parker Brown, Chelsea superintendent of public works, was found dead in his apartment at 120 South St., Wednesday morning. His death is a real loss to the community—he was a dedicated worker," commented village clerk George Winans.

Faculty and administration at Chelsea High school have launched a comprehensive evaluation of all phases of the present program in preparation for evaluation and recommendations for improvement from the North Central Association of Colleges and Secondary schools.

Charles H. Koenn and the Rev. Daniel A. Kelly, were presented Distinguished Service awards at the annual Chelsea Jaycees Bosses Night dinner program Tuesday night. Seven candidates were nominated for Outstanding Young Farmer and Outstanding Young Man awards.

Chelsea's Ron Sweeney has just become the latest addition and first freshman on the varsity basketball team.

Six to seven hundred scouts and leaders from Portage Trails Council are expected to gather at the Hudson Mills Metropark Saturday for the annual Klondike Derby.

Jim Branham of Chelsea, Derby chairman, expects more than 150 sleds to compete in this colorful winter event.

### 14 Years Ago...

Thursday, Jan. 22, 1959—

Plans for a community-wide celebration of the 125th anniversary of the founding of Chelsea were announced by Roland Spaulding at the January meeting of the Chelsea Chamber of Commerce. A non-profit organization has been formed in compliance with state law to "start the ball rolling."

Wallace Wood has been named as one of State Mutual Insurance Company's top ten agents for 1958, according to the company's president, Holley K. Fink.

Chelsea's post office vehicle drivers, Mark McKernan, Cecil Cobb and Richard Schaeles, regular carriers, and Robert DeFanti, Charles Curtis and Donald Eismann, substitute carriers, were singled out for outstanding performance in safety during 1958, by the Chicago Regional Operations Director.

The Church of Christ, which holds its worship services at the 100F hall of M-52, was forced to cancel its service last Sunday morning because of failure of the heating system.

The winter sports area in the Pinckney Recreation Area is now offering perfect skiing conditions at its two ski slopes with rope tows and two cross-country trails.

Clayton Hollis and Eugene and Robert Townner are announcing the grand opening of their newly completed "Wash 'n Dry" self-service laundry, at 114 W. Middle St. As a special feature of the three-day opening, they are offering free washing and drying privileges to those who wish to avail themselves of their offer.

Carl Chandler spent Saturday in Ann Arbor, where he represented Chelsea at the Region 2 Citizens Conference on Studying Michigan schools. The conference was held under the sponsorship of the University of Michigan in co-operation with the Michigan Congress of Parents and Teachers and the Michigan Department of Public Instruction.

### 24 Years Ago...

Thursday, Jan. 27, 1949—

Mrs. Walter Mohrlock, local chairman for the March of Dimes, reported Tuesday that contributions for the fund are coming in rather slowly. She said that several organizations had sent in their contributions but there were still many more to be heard from.

Building of an addition to the Chelsea Spring company's plant here is to begin the middle of March, according to a statement made this week by Lowell Davisson, local plant superintendent.

Fire of undetermined origin discovered Sunday evening, almost completely destroyed the house on the property of Waterloo Mink Ranch No. 2, on the east side of Francisco Rd., just north of US-12. Owner of the property is Louis Ramp of Waterloo, but the house was occupied by Mr. and Mrs. Steven Lake and their two small children. The family lost all of their clothing, and neighbors and friends are attempting to supply some of the needed articles.

Billowing clouds of black smoke originating about a mile west of Chelsea, Saturday afternoon, attracted considerable attention, most people believing there was a disastrous fire of some kind. Investigation proved that the smoke came from well-controlled oil fires set by employees of the old oil pipeline which was put through this section about 10 or 12 years ago from Mt. Pleasant oil fields to Toledo.

Mrs. Adeline Eschelbach was honored at a dinner given Sunday, in celebration of her 87th birthday at the home of her daughter and her husband, Mr. and Mrs. Louis Kuhl where she makes her home.

Miss Elsa Hertler sustained a fractured pelvis, Mrs. Mary Hertler, back injuries, Mrs. Herman Schlecht, a broken foot, ankle, and shoulder and her daughter, Peggy, cuts and bruises, in an automobile accident which occurred about 5:30

Sunday afternoon near Lima Center on US-12.

### 34 Years Ago...

Thursday, Jan. 26, 1939—

In a recent visit here, L. P. Dow, a representative from the University of Michigan Bureau of Co-operation with Educational Institutions, commented upon a matter which will soon be put to vote before Chelsea citizens, the proposed addition to the school building, providing for manual training and home economics departments. At present, students and teachers are confronted with overcrowded classrooms in a purely academic curriculum.

Mr. and Mrs. J. A. Dumouchel, Mr. and Mrs. Lyle D. Chriwell, Mr. and Mrs. Wilbur Hinderer, Mr. and Mrs. Edmund Miller, and Mr. and Mrs. Paul C. Maroney attended a meeting Sunday of the Second District Association of the American Legion and its Auxiliary at Adrian.

At a meeting of the members of Chelsea Community Fair held in Kolb's Hall on Monday, the following directors were elected: E. J. Claire, Roy Ives, Lloyd Heydlauff, Russell McLaughlin, and James Hendley. They were elected for a period of two years. Amendment was made to the by-laws to provide places on the directorate for two ladies. Mrs. Paul Schabale was elected for a two-year term while Mrs. Warren Daniels was elected for a one-year term.

James Hendley, the Rev. R. W. Barber, P. M. Broesamle, H. C. Schneider, Russell A. McLaughlin, and P. F. Niehaus were in Detroit last Thursday to attend the Mid-Winter conference of Michigan District Kiwanis International, held in the Masonic Temple and the 24th birthday of the Kiwanis.

Subscribe today to The Standard!

## NORTH LAKE ORCHARD

Next to Golf Course on south side of North Lake. 13260 N. TERRITORIAL RD.

Many thanks for placing your fruit and cider choices with me at this orchard.  
GOOD VARIETIES OF APPLES  
Excellent Ida Red Winter Apples  
\$2.50 - \$5.00 bu.

Closed Mondays and Thursdays. Open other Days, 10 a.m.-6 p.m.

Next to Highway, no trouble entering or leaving.

PHONE 475-2070  
H. WEBB

# WHO ARE THOSE GUYS ANYWAY?

You keep hearing us say we're Real Estate One . . . and then we say we're Weed Realty, and you say to yourself "Who are those guys anyway?" Well here is the official Real Estate One definition of our affiliation.

Real Estate One is the Midwest's largest real estate firm with both company owned and Associated offices across Michigan. Mr. Byron Weed and his staff work closely with other Real Estate One brokers to provide you with the most comprehensive real estate services available anywhere.

Now that you know who we are, call us first, because we are!

NEEDED IMMEDIATELY	NEEDED IMMEDIATELY	NEEDED IMMEDIATELY
3 clients seeking 2 and 3 bedroom ranch homes in Chelsea area.	We have two clients for lake homes - Chelsea area.	Many clients have contacted us for building sites, sm. & lg. parcels.

## AVAILABLE LISTINGS

140 ACRES ON WATERS RD.	HAMBURG TWP.
100 yr. old 9 room house extensively remodeled. Sandy loam soil, 135 acres farmed. 4800' ft. frontage on Waters, \$266,000.00.	7 room house off McGregor Rd. Right-of-way to private canal & road to public beach on Portage Lake. School bus at house. \$35,000.00.

HAMBURG TWP.	
3 room house on two large lots with access to Cordley and Bass Lakes. All furniture and appliances stay (washer & dryer). \$30,000.00.	

GARY LILLIE	769-1634	JACK SILKWOOD	662-7839
BOB PARKER	(517) 764-2015	DON SLAZINSKI	971-5022



475-8693

1196 M-52, Chelsea

761-8313

1300 SO. MAIN ST., ANN ARBOR

MEMBER MULTIPLE LISTING SERVICE

Minimum Storage Charge on Corn brought in after January 15 will be 3 cents per bushel. This covers storage thru February 28, 1973.

HONEGGERS' & COMPANY, INC.  
Phone 475-1386  
Chelsea, Michigan

Established 1871 The Chelsea Standard Telephone GR 6-3581  
Excellence Award By Michigan Press Association  
1951-1952-1960-1964-1968-1969  
Walter P. Leonard, Editor and Publisher

Published every Thursday morning at 800 North Main Street, Chelsea, Mich. 48118, and second class postage paid at Chelsea, Mich., under the Act of March 3, 1879.

Subscription Rates (Payable in Advance)  
In Michigan: One Year \$4.00, Six Months \$2.25, Single Copies \$ .15  
Outside Michigan: One Year \$6.00, Six Months \$3.50, Single Copies \$ .20  
Service men or women, anywhere, 1 year \$4.00

MEMBER National Advertising Representative: MICHIGAN NEWSPAPERS, INC.  
187 Michigan Ave.  
East Lansing, Mich. 48823  
Association - Founded 1968



## Swim Lessons Course Underway

Adult swimming lessons and Senior Lifesaving course have been announced by the Washtenaw County Red Cross Chapter.

Both sets of classes started Wednesday, Jan. 17. The Adult Swim class is open to anyone 18 or over. Instruction will be provided for all levels of ability from non-swimmer to the skilled swimmer with an average of six students to each instructor. These lessons are designed to improve your skills, so that you may have more fun and be more confident at the beach or pool. It is also a good way to keep in trim over the winter. Adult classes will meet at Ann Arbor Huron High from 9 p.m. till 10 p.m. for 10 weeks. Regular attendance is not mandatory.

The Senior Lifesaving class is open to highly skilled swimmers with a minimum age level of 15. The Lifesaving class will meet at Forsythe Junior High school in Ann Arbor from 7:30 p.m. till 10 p.m. each week for 10 weeks. The Red Cross Senior Lifesaving certificate will be awarded upon successful completion of the course.

To register for either of these classes call the Ann Arbor Recreation Dept., 665-8821. A pool usage fee of \$3 per person is required by the Recreation Dept. prior to the first meeting night. Those enrolling in the Senior Lifesaving will be required to purchase a textbook at the cost of \$1.

## Automatic Toll Recording System

(Continued from page one)

He said that operators will, of course, still be needed for person-to-person calls, as well as emergency assistance.

Kenworthy said the changeover to ANI will require modifications in wiring on some customers' premises. "In almost all cases, these wiring changes will be made on two-party lines," he said. "We have been doing this since September, and should have been finished by the first of the year."

Kenworthy said the change will affect only one- and two-party Chelsea customers. Four- and eight-party subscribers will continue to be identified by the operator.

He said there will be no changes in dialing methods, local calling area or customer rates. And, he explained, customers will still be charged for all their long distance calls.

"The ANI system is one more step in providing Michigan Bell customers with faster and more efficient service," Kenworthy said.

## CHS Wrestling Schedule

Jan. 30—Pinckney ..... there  
Feb. 1—Dexter ..... home  
Feb. 8—Brighton ..... there  
Feb. 20—Jackson Northwest home

## 3 Arrested Last Week on D&D Charges

Chelsea Police made three arrests on drunk and disorderly charges last week. Glenn Wendell Grover of Fowlerville was the first of the three.

Grover was taken into custody Jan. 17, after police received a call from an apartment dweller at 109 Middle St. The complaint, which arrived at approximately 1:30 a.m., was that Grover was standing in the hallway of the apartment, making a disturbance.

Chelsea patrolmen observed signs of intoxication in Grover's behavior. They transported him to jail where he posted \$35 bond.

He appeared before Judge Henry Atkinson in 14th District Court and pled guilty. He will be sentenced Feb. 21.

The next day, Robert Wendell Floyd of Gregory and Vernon Wayne Goodrich of Chelsea were arrested on the same charge at 10:45 p.m., after a day of reports, and wild goose chases.

The police were notified at 2 p.m. that there was a ruckus at the Wolverine Bar. They were asked to come break up the fight. When the police arrive, the two men responsible for the disturbance had left.

A half hour later, police were again called. The same two individuals, Floyd and Goodrich, were allegedly in front of the Pub. Again the men in question were gone by the time patrolmen arrived.

The Wolverine called the police at 7:40 that night to say the two men who had been fighting in the establishment earlier had returned. Although police failed to apprehend them at that time, they were called off patrol at 10:45 that night because Floyd and Goodrich were waiting for them at the station.

The officers, having observed signs of intoxication, booked the men and transferred them to jail.

## CUB SCOUT NEWS

### DEN 1, PACK 415—

We had our regular meeting, Thursday, Jan. 18, at the home of our den mother, Mrs. George Atkinson. After business was taken care of, we finished our plans for the pack meeting skit.

Everyone taped a piece of rope, and learned to coil the rope, and toss it 20 feet.

Jerry Ratzlaff brought treats. Billy Freeman, scribe.

### DEN 8-9, PACK 445—

Den 8-9 made cherry trees for the Blue and Gold Banquet, Feb. 17. They will perform magic at the pack meeting Jan. 22.

Mike Ward, scribe.



WITH A STROKE OF THE PEN, A. E. Fulks, Chelsea Village president, proclaimed National Jaycee Week, Jan. 21-27, a part of Chelsea life. Mike Eubanks, Jaycee president, (left) and Art Steinaway, past president, were part of the ceremony.

## Classes Slated in Mother, Baby Care

Washtenaw county chapter of American Red Cross is announcing a class in Mother and Baby Care. This course is designed to teach the individual to prepare for parenthood as well as to care for a newborn infant. It also teaches basic nutrition in pregnancy and gives the student confidence in holding, bathing and caring for a child up to one year of age.

Mother and Baby Care classes begin Monday, Jan. 15, 7 to 9 p.m., at the Red Cross Operations Center, 2729 Packard Rd., Ann Arbor. Classes meet on Mondays for six lessons ending Feb. 19. The instructor will be Mrs. Mary Sexton, RN.

Classes for fathers and mothers—with couples being invited.

There is no charge for the classes. You may sign up by calling Red Cross at 971-5300, between 8:30 a.m. to 5 p.m., Monday through Friday. All classes will be held at Red Cross Operations Center, 2729 Packard Rd., Ann Arbor.

## Community Chest...

(Continued from page one)

Heller, Sam Johnson, and Mrs. Jon Schaffner.

The only other order of business, Wednesday night, was the annual treasurer's audit report. The board of directors meets monthly on the first Wednesday.

PUPPIES SUCH AS THESE are always available for adoption at the Humane Society of Huron Valley, located at 3100 Cherry Hill Rd., or phone 662-5585. This Shetland sheepdog (Sheltie) in the

picture was brought to the shelter and a few days later had a litter of puppies. They are now about four weeks old.

## PROCLAMATION Junior Achievement Week - January 21-27, 1973

WHEREAS, Through the vision and foresight of national business leaders, the Junior Achievement movement was established 53 years ago to teach young adults, by practical experience, the value of the American free enterprise system, and

WHEREAS, This movement has spread throughout the land and across the seas and has attained its highest membership in Southeastern Michigan where thousands of students from 200 high schools meet at 26 Junior Achievement Business Centers, and

WHEREAS, Nearly 1,000 representatives from area business and industry serve as volunteer advisors to guide young adults in the operation of their first corporate ventures, and

WHEREAS, J.A. helps develop tomorrow's leaders by creating incentives, providing challenges, and by instilling pride in good citizenship and responsibility.

THEREFORE, as President Pro-Tem of the Village of Chelsea I proclaim January 21-27, 1973 Junior Achievement Week in Southeastern Michigan and urge all our citizens to encourage and support our ambitious young businessmen and women and their dedicated counselors and to visit their J.A. Business Centers during this period.

Given under my hand and seal this 16th day of January, 1973.

Arden A. Musbach

## Long Sought Youth Center Opens

(Continued from page one)

The basement will be converted into an art room.

Those who have been working on

the center for so long now are anxious to see others join in the fun of the final preparations. Lots of teen-age participation will make the project a success.

## Varsity Cagers Drop 2 More

(Continued from page one)

Manchester steadily pulled away in the second period, stretching to a lead of 43-28 by the half. Scott Gormley accounted for 10 of Manchester's 25 points, while Mann was Chelsea's only bright spot. He hit three long shots to keep Chelsea in the game.

After Manchester netted the first two baskets of the second half, Chelsea came alive. By the end of the third quarter, the Manchester advantage was narrowed to 41 points. Marvin Guster steered the machine toward revenge with his eight points. Tim Treado added six of his own.

The hustling Bulldogs continued to dominate the game with Tim Treado and Bruce Guster spurring the drive with three buckets each. But time ran out. Marvin Guster's last-minute basket hiked the Bulldog score to 68. That wasn't enough to overcome Manchester's 71 points. The Flying Dutchmen sailed to victory by a hair's breadth.

Chelsea's offense came to the fore at long last Saturday night. They hit 31 buckets to outscore Manchester from the field, 62-58. Manchester's strength was at the line where they outscored Chelsea, 14-12.

John Mann led the Bulldog scoring with 17 points. He was followed closely by Tim Treado, with 16. Jeff Daniels with 15, and Marvin Guster with 14. Daniels was the most adept rebounder. His tally on the boards was 16. Marvin Guster snatched nine.

## Full Line Supermarket

BEER - WINE - LIQUOR  
LOTTERY TICKETS  
MARATHON GAS PUMPS  
2-CYCO GAS PUMPS  
AUTHORIZED  
FOOD STAMP STORE

# Jiffy market

Big Enough To

Serve You... Small Enough To Know You!

Open 7 Days A Week  
7 a.m. to 10 p.m.

Corner Sibley & Warkner Rds.  
PHONE 475-1701

Sale Prices Effective  
Thurs. Jan. 25 thru Sun. Jan. 28

## TOP VALUE STAMPS - GUARANTEED SATISFACTION - COURTEOUS SERVICE

## MEAT DEPT.

U. S. CHOICE BEEF

## STEAK SALE

U. S. CHOICE  
Round Steak...lb. \$1.09  
Boneless Round, lb. \$1.19  
Top Round.....lb. \$1.19  
U. S. CHOICE  
Rib Steak.....lb. \$1.39  
Sirloin Steak...lb. \$1.49  
T-Bone Steak..lb. \$1.69  
Porterhouse Steak lb. \$1.79

HICKORY HAST PLAIN OR GARLIC  
RING BOLOGNA...lb. 79c  
LB. PKG. ARMOUR'S  
LARD.....19c  
LB. PKG. CAMELOT  
SLICED BACON.....89c  
FARMER PEET'S  
SLICING SAUSAGE..lb. 69c  
TOP VALUE STAMPS

## GROCERY DEPARTMENT

KLEEN-MAID  
BREAD... 1 1/4-Lb. Loaf 18c  
RISDON'S HOMOGENIZED  
MILK... Gal. 88c  
2-LB., 4-OZ. BOX  
JIFFY  
BISCUIT MIX 29c  
NEVER BEFORE IN CHELSEA!  
ALL FLAVORS LADY BORDEN'S  
ICE CREAM qts. 49c

## SEVERAL BRANDS OF LOW RETAIL BEERS

JIFFY FREE JIFFY

SNIP THIS COUPON,  
BRING IT TO JIFFY MARKET  
SMILE!! SAY HI!!

We'll Give You 100 Top Value Stamps

JIFFY MARKET

13-OZ. BAG  
CRISPY FLAKE  
POTATO CHIPS...39c  
8 16-OZ. NO-RETURN BOTTLES  
COCA-COLA 1 gal. 89c  
ALL SIZES AND BRANDS  
CIGARETTES Crtn. \$3.25  
NORTHERN  
TOILET TISSUE 4 pk. 29c

## DAIRY DEPT.

MICHIGAN  
BUTTER 59c/lb.  
MEADOWDALE  
MARGARINE 14c/lb.  
4 Yellow Quarters  
FROZEN FOODS  
MEADOWDALE  
FRENCH FRIED  
POTATOES 25c  
2-Lb. Pkg.

## PRODUCE DEPT.

SWEET, JUICY  
TEMPLE  
ORANGES 59c/doz.  
100 Size  
BABY FOOD DEPT.  
1 CEREAL BOWL  
FREE!  
with purchase of  
BOX BABY CEREAL  
8-Oz. Box Only 19c  
Gerber Baby Foods  
Strained Fruits  
and Vegetables... 8c  
Junior  
Sizes... 15c

## MARATHON GAS PUMPS

REGULAR 35.9 gal.  
Gas Prices Include All Taxes  
PREMIUM 37.9 gal.  
SPECIAL!!  
THURS. - FRI. - SAT. - SUN.  
Drive in - Smile - Fill Up  
100 FREE TOP VALUE STAMPS  
WITH EACH FILL-UP

Mich. State Lottery Tickets - Fresh Meats - Produce - Groceries - Beer - Wine - Liquor - Magazines - Frozen Foods - Fresh Bakery Goods - Health & Beauty Aids - Daily & Sunday Papers



**Ads**  
**Taken**  
**Till 5 p.m.**  
**Tuesday**

# USE ACTION-PACKED WANT ADS

**Just**  
**Phone**  
**475-1371**

## WANT ADS

### The Chelsea Standard

#### WANT AD RATES

PAID IN ADVANCE—All regular advertisements, 50 cents for 25 words or less, each insertion. Count each figure as a word. For more than 25 words add 2 cents per word for each insertion. "Blind" ads or box number ads 35c extra per insertion. CHARGE RATES—Same as cash in advance, with 15 cents bookkeeping charge if not paid before 5 p.m. Tuesday preceding publication. Pay in advance, send cash or stamps and save 15 cents. DISPLAY WANT ADS—Rate, \$1.10 per column inch, single column width only. 6-point and 14-point light type only. No borders or boldface type. Minimum 1 inch. CARDS OF THANKS or MEMORIALS—Single paragraph style, \$1.00 per insertion for 50 words or less; 8 cents per word beyond 50 words. COPY DEADLINE—5 p.m. Tuesday week of publication.

FOR SALE—1972 Ranchero, automatic, radio, vinyl roof, 302 engine. Ph. 475-8575. x33

### GAR - NETT'S

**Flower & Gift Shop**  
Your Friendly Florist  
112 E. Middle St., Chelsea  
**PHONE 475-1400**  
Funeral Flowers  
Wedding Flowers  
Cut Flowers (arranged or boxed)  
Potted Flowering Plants  
Green Plants - Corsages  
**WE DELIVER** x9tf

### Custom Kitchen Cabinets and Formica Tops

Made to Order  
**475-2857** x32tf  
PIANO TUNING, Chelsea and area. Facilities for reconditioning and rebuilding. Used piano sales, reconditioned grands and verticals. E. Eklund, 425-4429. x50tf  
TRAVEL TRAILERS — 18-ft. and up; 10x65 ft. trailers. John R. Jones Trailer Sales, Gregory, Mich. Phone 498-2655. 43tf

**1973 is Here**  
**& so are We...**  
— OUR MOTTO —  
If we can't LEVEL with you we'll do our best to PLUMB it!

### DALE COOK

Presents  
**Countryside Builders**  
Best Custom Home Construction, additions - remodeling - aluminum siding - gutters —  
**YOU NAME IT; WE DO IT RIGHT.**  
FIVE GOOD REASONS:  
Craftsmanship  
Promptness  
Courtesy  
Honesty  
Please Call  
DALE COOK - 475-8863  
for Free Estimating  
Or, if no answer, call  
Dennis Johnston 475-8369  
Lenora Kozma 475-7979  
Thomas Dunlap 475-7615  
James C. Hughes

## WANT ADS

### Last New '72

Going Under Invoice

### Previously Owned Autos

- '72 PLYMOUTH Fury II, 2-dr. hardtop. x48tf
- '70 DUSTER, green, 225, automatic, radio, white sidewalls, low mileage. \$1695
- '70 GOLD DUSTER, red, 225, automatic, radio, new tires. Sharp. \$1595
- '70 DUSTER, sport coupe, 225, 3-speed, radio, new wide sidewall tires. \$1495
- '69 CHRYSLER Newport 4-dr. sedan, 383, auto., p.s., p.b., air cond. Like new. \$1495
- '69 CHARGER 2-dr. hardtop, 318, auto., p.s., vinyl roof. \$1495
- '69 DODGE D-200 pick-up, 318, 3-speed, junior West Coast mirrors, radio, new paint. \$1395
- '67 FORD Econoline Van, 6-cyl., 3-speed, radio, 40,000 miles. Sharp. \$995
- '67 FURY I 4-dr. sedan, 225, 3-speed, good tires. \$595
- '66 CHARGER V-8, auto., p.s. \$395
- '66 CHRYSLER Newport, 4-dr. 383, automatic, power steering, power brakes, snow tires. \$395
- '65 F-35 wagon, V-6, auto., Ziebarted. \$395

### Village Motor Sales, Inc.

IMPERIAL - CHRYSLER  
DODGE - PLYMOUTH  
Phone 475-8661  
1185 Manchester Rd., Chelsea  
Hours: 8 a.m. to 6 p.m.  
Tues. thru Fri. Until 9 Monday.  
9 a.m. to 2 p.m. Saturday. x32tf

1972 HOOVER, \$22.50—Nice 2-tone Hoover cleaner used just a few times. All cleaning tools included. Only \$22.50 cash. Call Ypsilanti 483-4329 collect 9 a.m. to 9 p.m. Electro Grand. x32

### ALLSTATE INSURANCE

AUTO - BOAT - COMMERCIAL  
LIFE - HEALTH - HOME  
Phone Eves. or Week-ends for

**N. H. MILES, Agent**  
**GR 5-8334** x29tf

### Men's and Boys' JEANS & SLACKS

Famous Name Brand  
**BIG DISCOUNT**  
Main Floor and Bargain Floor  
at  
**DANCER'S** x31

HELP WANTED—Reliable, middle-aged woman for house cleaning 1 or 2 days a week in Dexter-Chelsea area. Ph. 475-8679. x31tf

## WANT ADS

### KNAPP SHOES

For Cushion Comfort  
**Robert Robbins**  
475-7282 x48tf

### FRISINGER REALTORS

475-8681  
CHELSEA

\$28,500—Larger older home, good location for schools and shopping. Could be 4 or 5 bedrooms, dining room, family room, recreation room. \$30,900—Grass Lake, 4-bedroom older home in the village, located on 1 acre. Large trees, dining room. \$19,500—Cavanaugh Lake, 2-bedroom year-round home, newly remodeled. \$21,900—3-bedroom home, attractively decorated. Fenced back yard. \$28,900—3-bedroom older home, 1 1/2 baths, close to downtown, garage, all carpeted. \$49,900—30-acre farm with outbuildings and barn, 6-bedroom home.

NEW—Country living, 1 acre, 3-bedroom, fireplace, family room, 2-car attached garage. Located between Chelsea and Ann Arbor. Chelsea schools. \$43,500. \$28,900 — 1-acre lot, 4-bedroom, new kitchen, Village of Chelsea. 305-ACRE FARM, 2 miles south of Chelsea; 213 acres 1/4 mile east of Chelsea; 100 acres 2 miles east of Chelsea.

BUILDING SITES — Many to choose from, 1A-5A-10A-15A. Select now for building in the spring.

### Frisinger Realtors

MULTI-LISTING  
Chelsea 475-8681  
Evenings:  
Toby Peterson 475-2718  
Herman Koenn 475-2613  
Mary Ann Staebler 475-1432  
Paul Frisinger 475-2621 x32tf

### THORNTON

475-8628  
JUST LISTED—Attractive 3-bedroom, 2-bath home within the village. Fireplace, full basement, 1-car garage. Call today for an appointment.

GOOD STARTER HOME—An older home in very good condition, with 3 bedrooms and very convenient to the elementary schools.

COUNTRY RANCH—A very lovely brick home at North Lake—good beach access. Three bedrooms, 2 baths, 2 fireplaces, large deck off living room and walk-out basement. Great family home.

ATTRACTIVE HOME — Older home with new kitchen, 3 bedrooms, and a short distance to elementary schools.

IN BUT OUT—Enjoy country living on 1/4-acre just a short distance out of the village. Have all the conveniences for close shopping. Has 2 baths, stone fireplace, patio and other very attractive features.

IMMACULATE HOME—Completely remodeled. This home has 3 bedrooms, 1 1/2 baths, and a very large fenced in back yard within village. Must see to appreciate.

NEW NORTH LAKE HOME—Just what you have been waiting for. A brand new quad level, 3-bedroom home. Mighty sharp brick and cedar exterior and a family room with fireplace. You'll live in style in this home.

BUILDING SITES — 1 acre at North Lake, 2-16 acres, rolling, some with trees, beautiful settings. Terms.

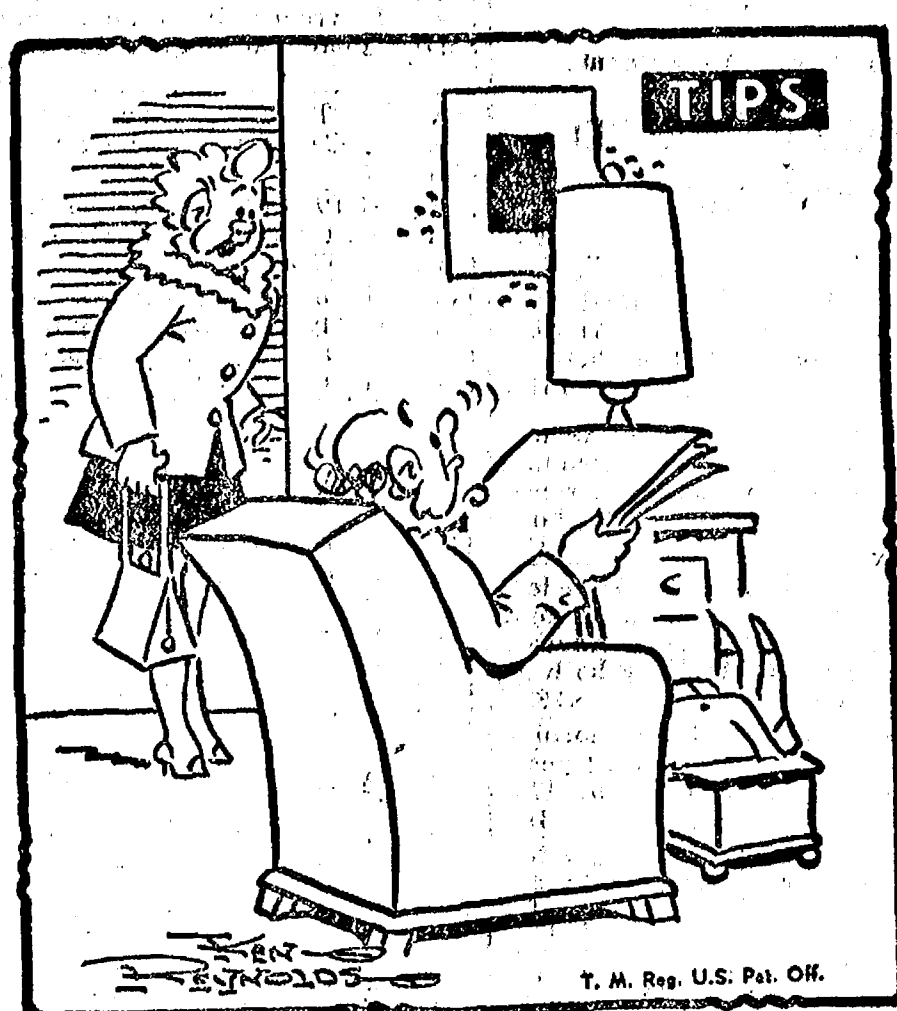
### THORNTON

328 S. Main Realtor Chelsea Eves:  
John Pierson 475-2064  
Helen Lancaster 475-1108  
Bob Riemenschneider 475-1469  
Bob Thornton 475-8867 x32

MOVING SALE — 210 Washington St. Furniture, clothes, odds and ends of all kinds. Thursday and Friday from 12 noon to 6 p.m., Saturday from 10 a.m. to 3 p.m. x32

### ELECTROLUX VACUUM CLEANERS

SALES and SERVICE  
**JAMES COX**  
Ph. 428-2931 or 428-8221  
Manchester



"Wait until I show you what a tattoo parlor I saw in the Standard Want Ads - can do!"

## WANT ADS

SNOWMOBILE TRAILERS, heavy duty doubles, with wide oval tires. Special close-out, \$139.95. Coffman Sports Center, 1011 Lansing Ave., Jackson. x32

### Headquarters for RED WING WORK SHOES

Foster's Men's Wear x40tf

### CUSTOM BUILDING

LICENSED & INSURED  
FREE ESTIMATES

### TOTAL CONSTRUCTION SERVICES

- Residential, commercial and industrial
- Garages
- Remodeling - Additions
- Aluminum Siding
- Roofing
- Trenching

### SLOCUM CONTRACTORS & BUILDERS

Serving Washtenaw County  
For Over 20 years  
20700 OLD US-12  
CHELSEA  
Phone 475-8321 or 475-7611 x21tf

### New and Remodeling Residential Carpenter Contractor

**M. A. LAWRENCE**  
Ph. 475-1106 x20tf

### REAL ESTATE LISTINGS NEEDED

Give us a call.  
Phone 475-8563  
**KERN REAL ESTATE**  
616 South Main St.  
Chelsea, Mich. x29tf

### Time for a Change...



from old, worn down tires to SAFE new ones! Come in today! Your tires have been taking a real beating. How much longer can they stand up? Better to be safe than sorry! Trade them in on a new set.

UNION 76 OIL PRODUCTS

**Jim's Union 76 Service**  
Tires — Batteries — Tune-Ups — Brake Service — Wheel Alignment  
PHONE 475-2822  
501 SOUTH MAIN

## WANT ADS

**CALL NOW**  
**SAVE \$\$\$**  
**Greenwood**  
for  
**Siding - Remodeling**  
**FREE ESTIMATES**  
Call  
Chelsea 475-2400 x7tf

### 4 GOOD REASONS To Buy A Value Rated Used Car at Sprague Buick-Olds-Opel, Inc.

- I Value - Rated used cars are carefully inspected!
- II They're reconditioned if necessary!
- III They are fairly priced!
- IV And now each Value-Rated used car comes with a mileage affidavit!

1971 BUICK LeSabre Custom 2-dr. (air cond.) Low mileage. \$2095

1970 PONTIAC Grand Prix. Nice car (air cond.) \$2095

1970 CUTLASS 4-dr. (air cond.) Real nice \$2095

1970 BUICK Skylark G.S. Conv., a.t., p.s., black beauty, \$2095

1970 BUICK Skylark 2-dr., a.t. \$1695

1970 CHEVY Nova 2-dr. Real nice. \$1595

1969 OLDS Vista Cruiser 3-seater (air cond.) \$1995

1969 BUICK LeSabre 4-dr. (air cond.) \$1695

1969 OLDS Delta Custom 4-dr. (air cond.) \$1795

1969 CHEV Impala 2-dr. hardtop \$1495

1968 THUNDERBIRD Landau 2-dr. (air cond.) \$1495

1968 PONTIAC Grand Prix. Loaded, (air cond.) Extra nice. \$1995

1968 OLDS Toronado (air cond.) Clean \$1495

1968 BUICK LeSabre 2-dr. hardtop. Real nice \$1295

1968 CHEVY Caprice 2-dr. Vinyl top \$1095

1968 OPEL station wagon \$795

1968 CHEV station wagon. Special \$595

1967 OLDS Vista Cruiser (air cond.) Real nice \$1195

1967 OLDS Cutlass station wagon. Low mileage \$995

1967 BUICK Wildcat 2-dr. Full power (air cond.) \$995

1965 FORD 4-dr. hardtop. Runs good \$295

1965 OLDS convertible \$195

1964 DODGE 4-dr. sedan \$195

### SPRAGUE Buick-Olds-Opel, Inc.

Phone 475-8664  
1500 S. Main St., Chelsea x32tf

Signs Painted  
475-7391

FOR RENT—Efficiency apt. Call 475-1153 after 5 p.m. x32

229-6788. x33

222 So. Main St.  
Chelsea - 475-1301 x33

JANUARY CLEARANCE SALE

Save Now! at DANCER'S x31

## WANT ADS

SEE US for transit mixed concrete, Klumpp Bros. Gravel Co. Phone Chelsea 475-2530, 4920 Loveland Rd., Grass Lake, Mich. x40tf

### Fireplace Builder

Field stone mason, block and brick mason, tuck pointing.  
**FREE ESTIMATES**  
Call 475-8025 after 3 p.m.

**Patrick Grammatico** x40tf

### Gem Travel Trailers and Campers

PICK UP COVERS  
4' ————— \$100.00  
26' ————— \$179.00 and up

**Triangle Sales**  
Chelsea 475-4502 x40tf

ROBERT A. ALDER, licensed contractor, Residential building, remodeling. No job too small. 18200 Boyce Rd., Gregory, Mich. 48137. Phone 498-2539. x47tf

CAR RENTAL — by the day, week, end, week month. Full insurance coverage, low rates. Call Lyle Christwell at Palmer Motor Sales, 475-1301. x25tf

POTATOES — Quality, seconds, \$1.50 bushel. 7 a.m. to 8 p.m. No Sunday sales. Carl Schoonover, 9 miles northwest of Chelsea on M-52, right on Boyce Rd. left to 15557 Farnsworth Rd. Bring own container. x9tf

A fine selection of

New and Used Cars

for immediate delivery

**Harper Pontiac Sales & Service**  
475-1306  
Evenings, 475-1608 x23tf

CLOSE - OUT

SNOWMOBILE SUITS—Close-out. 1- and 2-pc. Reg. \$79.95. While they last, \$39.95. Colors to fit Scorpion, Rupp, Yamaha, Chaparral, Polaris, etc.

MITTENS, Reg. \$9.95, now \$4.95.

SNOWMOBILE BOOTS, \$7.49.

**Coffman Sports Center**  
1011 Lansing Ave., Jackson x33

HOUSE FOR SALE — Waterloo Area. 5 acres with new 3-bedroom b-level, 1 1/2 baths, priced in the 30's by owner. 596-2355. x31tf

**Pine Haven Saddlery**  
4534 Dexter Townhall Rd.  
Phone Dexter 426-4268

Complete line of English and Western equipment. 10% discount to all 4-H Club members.

Store Hours: Mon.-Sat., 9-9  
Sunday, 10-9 x52tf

HELP WANTED—Mothers I have the job for you. Weekly pay check. Three different types of work. Chelsea and Dexter locations. x33

FOR RENT—Efficiency apt. Call 475-1153 after 5 p.m. x32

229-6788. x33

222 So. Main St.  
Chelsea - 475-1301 x33

JANUARY CLEARANCE SALE

Save Now! at DANCER'S x31

## WANT ADS

VACUUM CLEANERS — Electro-lux, authorized sales and service. James Cox, Manchester. Ph. 428-2931 or 428-8221. x42tf

### THE LITTLE

#### FLOWER SHOP

3451 Waltrous Rd., Chelsea  
Phone GR 5-8508  
Sponsoring Welcome Wagon in Chelsea, Dexter areas.  
Flowers, corsages, arrangements and plants.  
Weddings and funerals. x47tf

### STORE-WIDE FURNITURE SALE

LAST 3 DAYS  
Sale Ends  
Saturday, Jan. 27

10% to 50% Discount on all stock

Living Room - Bedroom  
Dining Room - Lamps  
Accessories - Wall Decor  
Carpeting

SAVE 10% ON SPECIAL ORDERS

### MERKEL Home Furnishings

HOME FOR SALE by owner, completely modern, 3 bedroom, on two wooded lots on Cavanaugh Lake. Large living room, with cathedral ceiling and sun deck overlooking the lake. 1 1/2 bath, all built-in kitchen, hot water heat. Phone 475-1179. x33

### Sylvan Township

16 acres, part wooded. Excellent building location.

List your property with us for fast, efficient service.

### R. D. MILLER REAL ESTATE

Real Estate Broker  
475-7311  
15775 Cavanaugh Lake Rd.  
Chelsea, Mich. x15tf

### Real Estate For Sale

3-BEDROOM RANCH—Cathedral ceiling in living room and dining room. Built-in range, dishwasher and disposal. 1 1/2 baths, full basement with finished rec. room, screened patio, attached garage. Priced at just \$38,000. Easy to finance.

REMODELED OLDER HOME—2 bedrooms and den (or 3 bedrooms). Furnace, water heater, water softener and carpeting all less than 5 years old. Screened porch, basement, 2-car garage. Price reduced to \$26,500.

COUNTRY RANCH—Just 4 years old, 3 bedrooms, 1 1/2 baths, glassed and screened patio, large garage. Fishing and swimming privileges. \$37,500, terms.

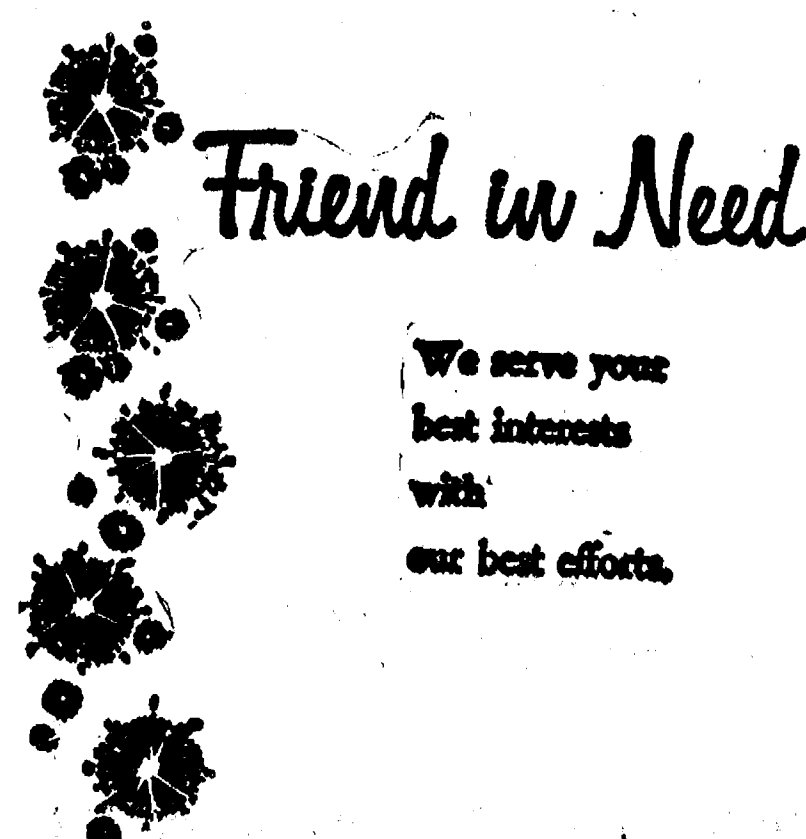
BUILDING SITE—Overlooking Inverness Golf Course. An ideal spot.

### CLARENCE WOOD BROKER

646 Flanders St.  
Phone 475-2033 x29tf

AT SUPPLIES — Chelsea Card a.i. Gift Shop, 116 S. Main St., Chelsea. 475-7501. x32

STONE WORK—Fireplace and masonry. For estimates call 475-1106. x51tf



### Friend in Need

We serve your best interests with our best efforts.

### Staffan Funeral Home

"Funeral Directors for Four Generations"  
124 PARK STREET  
PHONE GR 5-4417

### SCHNEIDER'S GROCERY

#### CHOICE MEATS - FISH - FOODS

1-LB. PKG. ECKRICH ALL-BEEF

**Franks . . . . . 79c**

1-LB. PKG. FARMER PEET'S RE-PEETER

**Bacon . . . . . 89c**

**Head Lettuce, 2/49c**

NO. 2 1/2 CAN HUNT'S

**Peach Halves . . . . . 2 for 69c**

12-OZ. CANS

**Coke . . . 6 pac 73c**

121 S. Main St.  
Phone 475-7600

YOUR CHOICE Maple Crunch, Raspberry, Blackberry

SARA LEE

**Coffee Rings . ea. 59c**

UNITED DAIRIES PLASTIC JUGS



### WANT ADS

**FENCE**—Chain link or redwood fence, all sizes. Material sold for your installation or we will install. Call 475-8147 or (517) 522-4337 for free estimate. **32tf**

**FOR SALE**—Unlaid vinyl and linoleum. Also tile, Armstrong and Congoleum. Natin. Installed by skilled craftsmen. Estimates, terms. Merkel Bros. 475-8821. **32tf**

**G. G. HOPPER**  
Building Contractors  
Phone GR 5-5581  
Gregory 498-2148 **40tf**

**Automotive Rust Proofing Cars and Trucks**

**Village Motor Sales, Inc.**  
IMPERIAL - CHRYSLER  
DODGE - PLYMOUTH  
Phone 475-9861  
1185 Manchester Rd., Chelsea  
Hours: 8 a.m. to 6 p.m.  
Tues. thru Fri. Until 9 Monday.  
9 a.m. to 2 p.m. Saturday **x21tf**

**Low Low Down Payment On New GOLD KEY MORTGAGES**  
For information ask your Realtor or call 683-7555.

**Ann Arbor Federal Savings**  
Equal Housing Lender **x37tf**

**The January Clearance Sale Is Now On 1/3 to 1/2 Off Winter Goods at DANCER'S** **31**

APPLICATIONS being taken for third shift (11 p.m. to 7 a.m.) press operators. Apply in person at Manchester Plastics, Inc., 500 W. Madison St., Manchester, between 8 a.m. and 4:30 p.m. **33**

**SQUIRES MFG. CO., Inc.** is now buying standing timber. Call 439-2414, 7 a.m. to 5 p.m., or 439-7757 in the evenings. **32**

**FOR SALE**—Travel trailer, 17-ft., self-contained, sleeps six, \$1,250. Ph. 475-7324. **x32**

## A Great Advancement in the Home-Building Industry

# WEBER HOMES

**Presenting**  
**DESIGNS OF THE DECADE**  
A Collection of Beautiful All-New Homes Designed By Nationally Famous Architects

### THE TALISMAN MODEL

The Frank Lloyd Wright Foundation has designed an entirely new concept in tri-level homes. The exterior, an outstanding expression of contemporary styling, incorporates wide overhangs, angles, natural finished wood, and a dramatic use of glass accents the facade. Inside,

the kitchen, dining room and living room are on the ground level. Master bedroom, family room and bath are on the upper level with two bedrooms and bath on the lower. Of course, there's plenty of closets and storage space and a two-car garage. Furnished by Merkel's.

### WORLD PREMIERE SHOWING

**Saturday and Sunday, Jan. 27-28, 1 to 5**  
12965 Old US-12, Corner of Luick Dr.

Appointments at Your Convenience - Office Hours: 9-5  
12290 JACKSON RD., CHELSEA  
OFFICE PHONE 475-2828

## W. C. WEBER CONSTRUCTION CO.

Office in Chelsea and Brighton

### WANT ADS

**PROFESSIONAL CARPET** cleaning service expanding to Westland county. All sizes and types of carpets cleaned, day or night. Call 426-7269 or (517) 426-4347 for free estimate. **32tf**

**EXPERIENCED baby-sitter** available Friday evenings and weekends. Ph. 475-7465. **31tf**

**ART SUPPLIES**—Chelsea Card and Gift Shop, 116 S. Main St., Chelsea. 475-7501. **32**

### LEHMAN WAHL

**Land Appraisal Residential and Farm**  
17087 West Austin Rd  
Manchester, Mich.  
Area Code 313  
429-8886 **31tf**

**FOR REAL DOLLAR SAVINGS** be sure and see us before you buy any new or used car. Palmer Motor Sales, Inc., Your Ford Dealer for over 56 years. **31tf**

**REPAIR SERVICE** for household refrigerators, freezers and garbage disposers. Call 311, 426-8313. **x21tf**

### CLOGGED SEWER

**Reynolds Sewer Service**

We Clean Sewers Without Digging  
Drains Cleaned Electrically  
**FREE ESTIMATES**  
**2-YEAR GUARANTEE**  
Phone Ann Arbor NO 2-5277  
"Sewer Cleaning Is Our Business Not a Side-Line" **32tf**

### FORMAL WEAR

**RENTAL SERVICE**  
Proms - Weddings - Special Events  
6 different colors.

**Foster's Men's Wear** **43tf**

**SNOWMOBILE BOOTS**—End of year clearance. Reg. \$15.95, now \$7.49. Also, children's and ladies boots, all sizes. Coffman Sports Center, 1011 Lansing Ave., Jackson. **32**

**FOR SALE**—1968 Ford Fairlane, V-8 engine, 390, 8-speed, runs good. Call 475-8359 after 3 p.m. during the week or any time during the week-end. **x32**

### WANT ADS

**KITCHEN HELP WANTED**—Must be at least 18. Apply in person. Chelsea Restaurant. **132**

**Complete Body Repair Service**  
Bumping - Painting  
Windshield and Side Glass Replacement  
Free Pick-up & Delivery  
Open Monday Until 9  
**CONTACT DON KNOLL FOR FREE ESTIMATE** **x28tf**

**Village Motor Sales, Inc.**  
IMPERIAL - CHRYSLER  
DODGE - PLYMOUTH  
Phone 475-9861  
1185 Manchester Rd., Chelsea  
Hours: 8 a.m. to 6 p.m.  
Tues. thru Fri. Until 9 Monday.  
9 a.m. to 2 p.m. Saturday **x14tf**

**WANTED TO RENT**, beginning May 1, large country home or 2 smaller adjacent homes. Able people willing to do improvements. Call Rick, 789-3215. **x32**

**BOWLING SNOW REMOVAL** Service, residential and commercial, low rates. Prompt and dependable service. Call evenings on the week days and all day on the week-ends. 475-2129. **x24tf**

**PATCHING AND PLASTERING**. Call 475-7498. **32tf**

**DAY CARE** for elderly lady or gentleman in my permit home. Will give extra care if needed. 475-1608. **x32**

**Vacant Acreage:**  
Good building acreages on the following roads: M-106, Curtis road, Maute road, Phal road, Seymour road and Page avenue. Complete details from 1-517, 522-8435 or

**Southside Realty**  
1-517-522-8469 **32**

### BURGLAR ALARMS

Custom designed for your home, office or business. Many styles to meet any need. Let us show you an application to solve your problem.

Phone 475-7322 **32**

### REAL ESTATE

**RUSH LAKE**—2 nice building sites. Rights to 3 lakeside parks.

**PORTAGE LAKE**—3 bedroom home on the water. Nice area.

**3 1/2-ACRE BUILDING SITE** between Portage Lake and Pinckney.

**Eugene Young**  
Broker  
878-3792 **x33**

**CAPABLE PERSON** for general office work. Typing, simple book-keeping work essential. Call 426-4663 for appointment. Universal Hydro-test Corp., 7700 Jackson Rd. 1515. **x32**

**FOR RENT**—One-bedroom house. 13990 N. Territorial, Ph. 475-1515. **x32**

**MIXED HAY**—75 cents a bale. Call 426-8260. **x32**

### Maid & Housemen

Get started with a good team! Applications for full-time employment are now being accepted at the new Marriott Inn-Win Schuler's, 3600 Plymouth Rd., Ann Arbor, Mich., southeastern Michigan's finest new motor inn. Benefits include life insurance, hospitalization, uniforms, free parking, and wage increases after 30 and 90 days. Apply in person to Mrs. Mikoy, daily between 9 a.m. and 3 p.m. No phone calls please. **x33**

### CHELSEA

516 Lane St., three-bedroom, hot water heat, fenced lot 60'x120', carpeting, for \$20,900. Broker 426-8830. Evenings, 878-8863, 878-9778.

14064 N. Territorial Rd., three-bedroom home on three acres, fireplace, basement, all reconitoned, for \$85,000. Broker 426-8830. Evenings, 878-8863, 878-9778.

**Lady of Lakes Real Estate**  
8660 Dexter-Pinckney Rd. **x32** 1940.

## NOTICE OF SPECIAL MEETING

Notice is hereby given that a Special Meeting of the Chelsea Village Council will be held on Tuesday, January 30, 1973 at 7:30 p.m. in the Council Room, 104 East Middle Street, Chelsea, Michigan, for the sale of General Obligation Sanitary Sewer Bonds.

## VILLAGE OF CHELSEA

Harold L. Peppington, Village Clerk

### WANT ADS

**NOW Full Time Complete Body Shop Service**  
Stop in For An Estimate  
**PALMER FORD**  
223 S. Main St.  
475-1301 **37tf**

1949 DESOTO, 4-dr. black sedan. 48,000 original miles. Real good condition. Original tires. Another 49 Desoto for parts. They both go together. 1-878-3825. **x19tf**

**FOR RENT**—Fair Service Center for meetings, parties, wedding receptions, etc. Weekdays or week-ends. Contact John Wellnitz, phone 475-1818. **x31tf**

1949 DESOTO, 4-dr. black sedan. 48,000 original miles. Real good condition. Original tires. Another 49 Desoto for parts. They both go together. 1-878-3825. **x19tf**

**DETROIT FREE PRESS** morning route. Must be at least 12 years old. Within the village. Ph. 475-7878. **31tf**

**FOR SALE**—1 acre building sites, Chelsea area. Phone 475-2829. **16tf**

**FIREPLACE WOOD FOR SALE**. Seasoned oak and hickory, and other hard woods. Will deliver. 475-1471. **23tf**

**CALL FRANK** for all your carpet cleaning jobs, morning or week-end. Needs only 3 hours to dry. Only 10¢ per square foot. Phone now for free estimate. 761-4323. All work guaranteed. **32tf**

**Shop the Bargain Floor 1/3-1/2 and more off at DANCER'S** **31**

**USED ELECTRIC STOVE** and refrigerator. Reasonable. Ph. 475-1479. **32**

**FOR SALE**—One upholstered chair, \$30. Chrome dining room table with 6 chairs, \$45. Standing lamp, \$15. Minnie Lesser, 475-2508. **32**

**FOR RENT**—5-room, first-floor apartment. Two bedrooms, tile bath, carpeted, completely furnished. Adults only. No pets. Available Feb. 1, 148 Orchard St. 31tf

**WANTED**—Baby-sitter in my home. \$50 a week for five days. Call 426-4997 after 4 p.m. **x32**

**STORE-WIDE FURNITURE SALE LAST 3 DAYS Sale Ends Saturday, Jan. 27 10% to 50% Discount on all stock**

Living Room - Bedroom  
Dining Room - Lamps  
Accessories - Wall Decor  
Carpeting  
**SAVE 10% ON SPECIAL ORDERS**

**MERKEL Home Furnishings** **x32**

**Work for 10 Weeks**  
8:15 a.m. to 4:30 p.m.  
5 days a week  
Pleasant surroundings, nice people to work with. Phone 663-9063. **x33**

**Vitality Seed Co.**

**MISCELLANEOUS** items for sale. 17860 Old US-12, Chelsea. **33**

**LOST CAT**—White male, two years old. 10-15 pounds, red collar, green eyes. Reward offered. Faller Rd., Sylvan Center area. Lost a week and a half ago. Ph. 475-2461. **32**

**KEEP** carpet cleaning problems small—used Blue Lustro wall to wall. Rent electric shampoo, \$1. Dancer's. **32**

**SIDING & ROOFING**, Carpentry work. Coburn Company. 475-8320. **x33**

**ANTIQUE**  
WANTED TO BUY  
Single items or complete households. Let us help you clean out your attic, basement, or other storage areas. We can also help you handle your estate. References will be provided.

**House of Antiques**  
8081 Main St., Dexter  
426-8482 or 426-8888  
Call any time

**IRONINGS WANTED**—Patricia Denton, 316 East St. Ph. 475-8823. **32**

**REDUCE** excess fluids with Fluidx, \$1.09. Lose weight with Dex-A-Diet capsules, \$1.98, at Chelsea Drug. **40**

**SKIN DISORDERS?** Try Tecon-Derm Vitamin E cream, 1260 IV per tube, at Chelsea Drug. **34**

### WANT ADS

**ELECTRICAL WIRING** of all types New and rewiring. Ph. 426-4655. **x28tf**

**ROBERT PATRICK** for home improvement, building and maintenance. Ph. 428-8501. **45tf**

**HAMMOND ORGAN** teachers wanted to teach in their own homes. Call Grinnell Brothers, Ann Arbor, 662-5667. **34tf**

**FOR SALE**—Indian cents, postcards, books, foreign coins, Australian opals, and other articles. Lawrence E. Guinan, 1571 Sugar Loaf Lake. Call 475-2817. **x28tf**

**BABYSITTING** in my country home. Cavanaugh Lake Rd. Ph. 475-8033. **32**

**ART SUPPLIES**—Chelsea Card and Gift Shop, 116 S. Main St., Chelsea. 475-7501. **32**

**WE BUY** old stringed instruments. Especially interested in guitars, banjos, mandolins, and autoharps. Please call 668-9836. **x35**

### MANCHESTER

If you want a farm, 20 to 140 acres or acreage from 3 to 40 acres; or in village, large building sites; a 3-bedroom, 1-bath, 2-story two-story; 4- or 5-bedroom near school; 3-bedroom, 1 block from Main, see

**FAHEY REALTY**  
15554 Fahey Rd., Manchester  
Phone 428-8748  
or 112 S. Washington  
Phone 428-8348 **x32**

**FOR SALE**—Aurumycin Crumbles, 50-lb. bag, \$6.75. Cole's Elevator Co., Inc., Gregory. Phone 498-2735. **x36**

**ESTATE AUCTION**  
**ANTIQUES - HOUSEHOLD FARM MACHINERY**  
To settle the estate of Ben Schneider we will sell the personal property at Public Auction at 7975 Scio Church Rd., Ann Arbor, Mich., 5 miles west of Ann Arbor between Zeeb & Parker Rd.

**Saturday, Jan. 27 at 11:00**  
Be sure to attend this fine sale. Dress warmly. Shelter in case of bad weather.

**NORMAN SCHNEIDER**, Administrator  
Auctioneers:  
**LLOYD R. BRAUN**  
Ann Arbor 665-9846  
**JERRY L. HELMER**  
Plymouth 453-4109 **x32**

**FOR LEASE**  
**Shell Oil Service Station**  
at Manchester Rd. & I-94 in Chelsea  
Investment required.  
Call Collect 477-774 after 7 p.m. or 444-5000 days. **x32**

**1972 DIAL AND STITCH** \$47.75—Left in layaway. Sewing stretch material. Comes with a walnut sewing table. Beautiful pastel color, full size head, all built-in to Zig-Zag buttonholes, overcast, makes fancy stitches and winds the bobbin automatically. Only \$47.75 cash or terms arranged. Trade-ins accepted. Call Tysant collect 483-4329; 9 a.m. to 9 p.m. Electro Grand. **32**

**FOR SALE**—1965 Jeep 1/2 ton pickup, 2-wheel drive. Phone 475-1476 after 6 p.m. **x32**

**FOR SALE**—Horse feed and horse feed pellets. Cole's Elevator Co., Inc., Gregory. Phone 498-2735. **x36**

**SEWING MACHINES**—Viking trade-ins, Singer Touch-n-Sews, from \$19.95. Necchi Zig-Zags, \$29.95. Singer's In-Desks, \$59.95. Over 50 Christmas trade-ins, cabinets, portable, from \$9.95 to \$99.95. All reconitoned. Coffman Sew Machines & Fabrics, 1011 Lansing Ave., Jackson. **32**

**FOR SALE**—Bird feed and sunflower seed. 50-lb. bag, \$8.75. Cole's Elevator Co., Inc., Gregory. Phone 498-2735. **x36**

**WANTED**—Cropland to rent or lease on contract. Parola of 25 acres and up considered. Ph. 475-2322. **34**

**FOUND**—All-white kitten about six or eight months old. To claim, call 475-8187. **32**

**STORE-WIDE FURNITURE SALE LAST 3 DAYS Sale Ends Saturday, Jan. 27 10% to 50% Discount on all stock**

Living Room - Bedroom  
Dining Room - Lamps  
Accessories - Wall Decor  
Carpeting  
**SAVE 10% ON SPECIAL ORDERS**

**MERKEL Home Furnishings** **x32**

**Work for 10 Weeks**  
8:15 a.m. to 4:30 p.m.  
5 days a week  
Pleasant surroundings, nice people to work with. Phone 663-9063. **x33**

**Vitality Seed Co.**

**MISCELLANEOUS** items for sale. 17860 Old US-12, Chelsea. **33**

**LOST CAT**—White male, two years old. 10-15 pounds, red collar, green eyes. Reward offered. Faller Rd., Sylvan Center area. Lost a week and a half ago. Ph. 475-2461. **32**

**KEEP** carpet cleaning problems small—used Blue Lustro wall to wall. Rent electric shampoo, \$1. Dancer's. **32**

**SIDING & ROOFING**, Carpentry work. Coburn Company. 475-8320. **x33**

**ANTIQUE**  
WANTED TO BUY  
Single items or complete households. Let us help you clean out your attic, basement, or other storage areas. We can also help you handle your estate. References will be provided.

**House of Antiques**  
8081 Main St., Dexter  
426-8482 or 426-8888  
Call any time

**IRONINGS WANTED**—Patricia Denton, 316 East St. Ph. 475-8823. **32**

**REDUCE** excess fluids with Fluidx, \$1.09. Lose weight with Dex-A-Diet capsules, \$1.98, at Chelsea Drug. **40**

**SKIN DISORDERS?** Try Tecon-Derm Vitamin E cream, 1260 IV per tube, at Chelsea Drug. **34**

### WANT ADS

**NEED THAT SECOND CAR?** An excellent buy, 1968 Ford Fairlane station wagon. 289 engine, automatic transmission, power steering and power rear window, air lift rear shocks. Call after 6 p.m., 426-8890. **x32**

**FIREPLACE WOOD**—Apple, oak and hickory. \$25 per cord delivered and stacked. Call 475-7791. **x32**

**DIAMOND ROOFING**, reroofing and repairing. Roof louvers installed. Gutters cleaned. Licensed roofer. Call 475-1129. **x45tf**

**EXPERIENCED BEAUTICIAN** wanted at Riverview Beauty Salon, Manchester, Mich. Ph. 428-8890. **x33**

**LISTENERS WANTED** for Christ for Everyone. Monday thru Friday, 5:30 p.m., WBFG-FM radio. **x32**

**FOR SALE**—2 lake-front cottages. One year-round home completely carpeted, oil heat. Patterson Lake, Kalsner Sub., Stockbridge schools. Call (617) 851-7822. **x32**

**PICK-UP CAMPER TOPS**—All styles and colors, slant sides, bubble windows, from \$89.95, \$169.95 and \$189.95, etc. Specials on insulated and paneled, with screens and lights. Reg. \$279.95, now \$219.95. Coffman Sports Center, 1011 Lansing Ave., Jackson. 82

**EVINGER REAL ESTATE**, Alpine St., Dexter. Phone 426-8518. **x18tf**

**FURNISHED**, one bedroom apartment for rent. Includes utilities. Phone 426-3961. **x31tf**

**FOR SALE**—'72 Chevrolet Vega, GT, 4-speed, low mileage, excellent condition. Call 475-2784 after 6 p.m. **x32**

**FOR SALE**—'106" Viking pick-up camper, in good condition. Ph. 475-8368. **x34**

**DO SOME** wintertime planning for your spring garage or addition. I have time now to help you draw your plans and estimate costs. Get a jump on the spring rush and call me, Bill Nolan, 426-8274 almost anytime. Licensed residential builder. **x31tf**

**FEED MILL OPERATORS**—Mechanical skills, feed mill knowledge desirable. Medical, hospitalization and life insurance benefits, company pension plan, eight paid holidays and liberal vacation plan. Apply in person. Honeggers & Co., Inc., 11800 Dexter-Chelsea Rd., 475-1386. **x32**

**STORE-WIDE FURNITURE SALE LAST 3 DAYS Sale Ends Saturday, Jan. 27 10% to 50% Discount on all stock**

Living Room - Bedroom  
Dining Room - Lamps  
Accessories - Wall Decor  
Carpeting  
**SAVE 10% ON SPECIAL ORDERS**

**MERKEL Home Furnishings** **x32**

**Passengers WANTED** to and from Ann Arbor, Monday thru Friday, 8 a.m. to 5 p.m. Ask for Tim at 475-8456 after 6 p.m. **32**

**FOR SALE**—35-foot Holiday Traveler trailer, 1967, like new inside and out, \$2,800. Russell Addison. Phone 475-8184. **x32**

**WANTED**—8 or 8 1/2 ft. cabover camper. Reasonable. (517) 522-8288. **32**

**STORE-WIDE FURNITURE SALE LAST 3 DAYS Sale Ends Saturday, Jan. 27 10% to 50% Discount on all stock**

Living Room - Bedroom  
Dining Room - Lamps  
Accessories - Wall Decor  
Carpeting  
**SAVE 10% ON SPECIAL ORDERS**

**MERKEL Home Furnishings** **x32**

**Passengers WANTED** to and from Ann Arbor, Monday thru Friday, 8 a.m. to 5 p.m. Ask for Tim at 475-8456 after 6 p.m. **32**

**FOR SALE**—35-foot Holiday Traveler trailer, 1967, like new inside and out, \$2,800. Russell Addison. Phone 475-8184. **x32**

**WANTED**—8 or 8 1/2 ft. cabover camper. Reasonable. (517) 522-8288. **32**

**STORE-WIDE FURNITURE SALE LAST 3 DAYS Sale Ends Saturday, Jan. 27 10% to 50% Discount on all stock**

Living Room - Bedroom  
Dining Room - Lamps  
Accessories - Wall Decor  
Carpeting  
**SAVE 10% ON SPECIAL ORDERS**

**MERKEL Home Furnishings** **x32**

**Passengers WANTED** to and from Ann Arbor, Monday thru Friday, 8 a.m. to 5 p.m. Ask for Tim at 475-8456 after 6 p.m. **32**

**FOR SALE**—35-foot Holiday Traveler trailer, 1967, like new inside and out, \$2,800. Russell Addison. Phone 475-8184. **x32**

**WANTED**—8 or 8 1/2 ft. cabover camper. Reasonable. (517) 522-8288. **32**

**STORE-WIDE FURNITURE SALE LAST 3 DAYS Sale Ends Saturday, Jan. 27 10% to 50% Discount on all stock**

Living Room - Bedroom  
Dining Room - Lamps  
Accessories - Wall Decor  
Carpeting  
**SAVE 10% ON SPECIAL ORDERS**

**MERKEL Home Furnishings** **x32**

**Passengers WANTED** to and from Ann Arbor, Monday thru Friday, 8 a.m. to 5 p.m. Ask for Tim at 475-8456 after 6 p.m. **32**

**FOR SALE**—35-foot Holiday Traveler trailer, 1967, like new inside and out, \$2,800. Russell Addison. Phone 475-8184. **x32**

**WANTED**—8 or 8 1/2 ft. cabover camper. Reasonable. (517) 522-8288. **32**

**STORE-WIDE FURNITURE SALE LAST 3 DAYS Sale Ends Saturday, Jan. 27 10% to 50% Discount on all stock**

Living Room - Bedroom  
Dining Room - Lamps  
Accessories - Wall Decor  
Carpeting  
**SAVE 10% ON SPECIAL ORDERS**

**MERKEL Home Furnishings** **x32**

**Passengers WANTED** to and from Ann Arbor, Monday thru Friday, 8 a.m. to 5 p.m. Ask for Tim at 475-8456 after 6 p.m. **32**

**FOR SALE**—35-foot Holiday Traveler trailer, 1967, like new inside and out, \$2,800. Russell Addison. Phone 475-8184. **x32**

**WANTED**—8 or 8 1/2 ft. cabover camper. Reasonable. (517) 522-8288. **32**

**STORE-WIDE FURNITURE SALE LAST 3 DAYS Sale Ends Saturday, Jan. 27 10% to 50% Discount on all stock**

Living Room - Bedroom  
Dining Room - Lamps  
Accessories - Wall Decor  
Carpeting  
**SAVE 10% ON SPECIAL ORDERS**

**MERKEL Home Furnishings** **x32**

**Passengers WANTED** to and from Ann Arbor, Monday thru Friday, 8 a.m. to 5 p.m. Ask for Tim at 475-8456 after 6 p.m. **32**

**FOR SALE**—35-foot Holiday Traveler trailer, 1967, like new inside and out, \$2,800. Russell Addison. Phone 475-8184. **x32**

**WANTED**—8 or 8 1/2 ft. cabover camper. Reasonable. (517) 522-8288. **32**

**STORE-WIDE FURNITURE SALE LAST 3 DAYS Sale Ends Saturday, Jan. 27 10% to 50% Discount on all stock**

Living Room - Bedroom  
Dining Room - Lamps  
Accessories - Wall Decor  
Carpeting  
**SAVE 10% ON SPECIAL ORDERS**

**MERKEL Home Furnishings** **x32**

**Passengers WANTED** to and from Ann Arbor, Monday thru Friday, 8 a.m. to 5 p.m. Ask for Tim at 475-8456 after 6 p.m. **32**

**FOR SALE**—35-foot Holiday Traveler trailer, 1967, like new inside and out, \$2,



## Community Calendar

March of Dimes Rural Mothers March against birth defects, Jan. 20-28.

January business meeting for the Senior Citizens Tuesday, Jan. 30, at 7:30 p.m. at the Korner House.

Lima Township Board meeting the first Monday of the month, 8 p.m. at the town hall.

Lyndon Township Board meeting the second Saturday of the month, 8:30 a.m. at the town hall.

Dexter Township Board meeting first Tuesday, bi-monthly, Dexter Town Hall, 8 p.m.

The non-denominational "Light of the World" prayer ad healing crusade, every Friday night, 7:30, at the Rebekah Hall on Main St. Everyone welcome.

Senior Citizen Fun Nite every Friday evening at 7:30.

Hot meal service brought to home of elderly or disabled. Available seven days a week to people living in the Village of Chelsea. For more information call 475-2923 or 475-8014.

Western Washtenaw Area Association meeting for Girl Scout, at St. Andrew's United Church of Christ, 7610 Ann Arbor St., Dexter, Jan. 29 at 8 p.m.

Parents Anonymous, a self-help group for parents who have child abuse problems and want to stop. For further information, call Sandy, 475-7519.

American Legion and Auxiliary hospital equipment available by contacting Don O'Dell at 475-8249.

Pap tests are free for all area women, Tuesday mornings, at St. Joseph Mercy Hospital, Ann Arbor. Call American Cancer Society office, 668-8857, for appointment.

Inquiries regarding the Chelsea blood bank may be directed to Harold Jones in the event that Mrs. Dudley Holmes is unavailable, or to Mrs. Pauline McKenna, American Red Cross in Ann Arbor, 971-6300.

March of Dimes radio auction, Saturday, Jan. 27, 9 a.m. to 5 p.m., station WNRS 1290.

Young Homemakers, Jan. 25, 6 p.m., at home of Martha Lulick.

Chelsea Mothers March of Dimes, Jan. 28.

Senior Citizen's February social party, Thursday, Feb. 1, at 7:30 p.m. at the Korner House.

Organizational Degree Staff meeting, Jan. 29, at 7 p.m., at the Rebekah Hall Call Mrs. Luther Hale, 475-8973, if unable to attend, or if interested in the team meeting.

Chelsea Rebekah Lodge public card party Feb. 3, 8 p.m., with Mrs. Nina Lehmann and Mrs. Clifford Wolf chairwomen. Euchre and other card games played. adv32

American Legion Auxiliary Post President pot-luck luncheon, 6:30, Tuesday, Jan. 30, at the home of Mrs. Sidney Schenk. Bring passing dish and table service.

Sylvan Township Board meeting the first Tuesday of the month, at 7 p.m. at Sylvan Township Hall.

Singles 25 and up: Be a lady or a knight at the Medieval Ball the Tuesday Night Singles Club is having at the YM-YWCA in Ann Arbor Jan. 30. Dancing from 9 p.m. to midnight. Refreshments.

Olive Chapter No. 140, RAM, Thursday, Jan. 25, at 7:30. Special meeting. DDI instruction.

St. Paul Junior High Fellowship dance, Saturday, Jan. 27, from 7:30 to 10 p.m. at the St. Paul United Church of Christ Fellowship Hall. All 7th and 8th graders invited.

Kinder Klub regular meeting, Feb. 13, 8 p.m., home of Mrs. Ronald Walters.

Humane Society of Huron Valley has dogs and cats for adoption and to be reclaimed by their owners. Phone 662-5585, or go there from 9 a.m. to 5 p.m. daily, Sundays, 1 p.m. to 5 p.m. 3100 Cherry Hill Rd., 1/4 mile south of Plymouth Rd. at Dixboro.

**CHELSEA FINANCE CORP.**  
\$25 to \$1,500  
For Any  
Worthwhile Purpose

See or Call  
**FRANK HILL**  
at 475-8631

111 PARK STREET  
CHELSEA, MICH.

# GOT A PROBLEM?

- ★ Do you get a shock when you walk on your carpeting?
- ★ Fuel bills too high?
- ★ Does your throat feel dry and scratchy in the morning?
- ★ Or maybe your furniture is splitting or coming unglued...

**SOLVE THESE PROBLEMS WITH A HUMIDIFIER**

On Sale  
As Low as **\$69<sup>95</sup>**

**HEYDLAUFF'S**  
113 North Main St., Chelsea Phone 475-1221

## DEATHS

### Clifford Heydlauff

Dies at His Home Friday Following Long Illness

Clifford Heydlauff, 62, of Sylvan township, died at his home Jan. 19, after a long illness. He was born in the house where he died, 4011 Kalmbach Rd., on Nov. 22, 1910, a son of George and Ruby Hotaling Heydlauff. He was engaged in farming on the family homestead all of his life. On Nov. 19, 1932, he married Christine Dresselhouse in Jackson. She survives.

Mr. Heydlauff was a member of Salem Grove United Methodist church and the Chelsea Farm Bureau. He had been a Chelsea schools bus driver for 12 years, before his illness.

Surviving, in addition to his widow are three sons, Jerald and James Heydlauff, both of Dexter, and Ned Heydlauff of Sturgis, and a daughter, Mrs. James (Ann) Alexander, as well as nine grandchildren. Also surviving are two brothers, Lloyd and Willis Heydlauff, both of Chelsea, and a sister, Mrs. Walter (Elsie) Kalmbach of Grass Lake, several nieces and nephews.

Funeral services were held at 2 p.m. on Sunday, Jan. 21, at the Burghardt Funeral Home with the Rev. Harry Schenk officiating. Burial followed in Salem Grove Cemetery. The family suggests that those desiring to do so may make memorial contributions to the American Cancer Society.

### Ludwig Kazda

Native of Hungary Dies at Chelsea Hospital

Ludwig Kazda, of 725 W. Middle St., died at the Chelsea Community Hospital Jan. 19, aged 90. He was born Aug. 14, 1882, in Hungary.

He is survived by his widow, Elizabeth; one son, Louis, of Ann Arbor; Miss Matilda Kazda, of Ohio; and three granddaughters. Funeral services were Tuesday, Jan. 23, at 2:30 p.m. at the Chelsea Methodist Home Chapel. The Rev. Richard Clemens officiated. Burial followed at Oak Grove Cemetery. Arrangements were by the Staffan Funeral Home.

### Miss Vera Jeffery

Former Kingston Resident Dies at Methodist Home

Miss Vera Jeffery of the Chelsea Methodist Home died Jan. 19, at the age of 86. She was born Nov. 17, 1886, in Kingston township, to Robert D. and Rosetta Schloch Jeffery.

She came to the United Methodist Home, June 1965, from Kingston. Funeral services were held Monday, Jan. 22, at 11 a.m., at the Chelsea Methodist Home Chapel with the Rev. Richard Clemens officiating. Burial followed in Kingston. Arrangements were handled by Staffan Funeral Home.

### Girl Scouts

TROOP 689—

The Nature Wanders took part in the flag ceremony. We made get-well cards for Mr. Hafner. Valisa Pletcher brought cookies. Larie Flinn, scribe.

### LaVerne G. Hailey, Jr.

Chelsea High 1969 Graduate Dies Saturday at Hospital

LaVerne G. Hailey, Jr., of 651 Pierce Rd., died Jan. 20, at St. Joseph Mercy Hospital. He was 21.

He was born May 8, 1951, at Ann Arbor, the son of LaVerne G. Hailey and Vera Ganzhorn Hailey. He graduated from Chelsea High school with the class of 1969. He is survived by his parents, Mr. and Mrs. LaVerne Hailey; two brothers Ronald and Dennis at home; two sisters, Mrs. Judy Osinski of Ypsilanti, and Janet at home; and by his grandmother, Mrs. Gertrude Ganzhorn of Ann Arbor.

A brother, Douglas, preceded him in death Oct. 22, 1971.

Funeral services were Tuesday, Jan. 23, at 11 a.m., at the Staffan Funeral Home. Mr. David Rushlow officiated. Burial followed in Maple Grove Cemetery, Sylvan Center.

## Group Tours Now Offered Area Residents

The Ann Arbor Fun club, a travel group headed by Mr. and Mrs. Ralph Parker of North Lake, will be getting off to such exotic places as the Caribbean Islands, Las Vegas, and Rome this year. For the first time, Chelsea residents have the opportunity to join them.

Club tours were restricted to University of Michigan Hospital employees and their families until recent rule changes opened the opportunities to more people. The relaxed rules regarding affinity groups now allow Chelsea residents to take advantage of the special rates for singles, children under 12, and the usual adult double occupancy.

The Las Vegas trip is scheduled for March. For \$189 plus tips and taxes, Chelsea residents may spend five days at the Thunderbird Hotel on Las Vegas's "strip." The package includes room, breakfast, and a big night with a steak dinner and a show. Information about this trip, and other packages for vacations in the Caribbean and Rome may be obtained from Mrs. Parker at 7207 Webb's Landing, North Lake, or at 475-7693.

## Boat Safety Classes Start

The Coast Guard Auxiliary is offering a class in Boat Safety and Seamanship for those interested in safe boating.

Flotilla 12-19 started this course Jan. 15, at 7:30 p.m., at the Washtenaw Community College, in Lecture Hall 2, of the Exact Science Building.

Registration will be made the first night of class. Further information may be obtained by calling 434-0052 after 6 p.m.

This course, new and revised over the courses given in previous years, lasts approximately 10 weeks and will be for 2 1/2 hours per class. The information covered will be boating language, boat handling, legal requirements, rules of the road, aids to navigation, charts and compass, marine engines, marlinpike seamanship, sailboats, weather and radio telephone.

Those who satisfactorily complete the course will receive a certificate. There is a small charge for textbooks and materials. The instruction is free.

AGE  
23

**Married Male Driver**

Your A-O man will save you money on your car insurance. No surcharge or higher rate. See your A-O man — he's all out for you.

**A. D. MAYER AGENCY, INC.**

"Your Protection Is Our Business"

Phone 479-5061

115 Park St. Chelsea

**Auto-Owners INSURANCE COMPANY**

## North Sharon Bible Church Honors Babies

Babies up to two years of age will be honored in "Baby Day" services Sunday, Jan. 28, at North Sharon Bible church, on Sylvan and Washburne Rds. All parents and babies of surrounding communities are welcome to visit Sunday school at 10 a.m. and church at 11 a.m.

Each baby attending will receive a free colored picture in remembrance of the occasion. Each mother of a baby will be honored with a pick or blue "baby" corsage. During the first part of the church hour, the babies will be brought from the nursery to their parents. In a "Baby Parade," each will be introduced to the congregation.

The church hour will also feature an infant dedication service for parents who desire it. The two- and three-year-old class will provide special music under the direction of Mrs. Becky Proctor.

The church is sponsoring Baby Day to express its love and concern for all babies and parents of the community. A graded supervised nursery is available for all services at North Sharon. The Cradle Roll ministry is directed by Mrs. Pat Harris and Mrs. Pansy Kuhl.

To-your-door bus service is available free in the Chelsea area by calling the church at 428-7222.

March of Dimes volunteers work to prevent birth defects by providing programs of prenatal care, public health information and professional education and community service.

## Farmers Night Speaker Has Farm Background

Along with invitations to area farmers, a special and very flattering invitation was sent to Dale Fast. He was asked to be the speaker at Monday night's Farmers Night at the Kiwanis Club.

The flattering aspect of the invitation was that he had spoken to the group before, and they had wanted him to return.

Fast served six years on the State Board of Directors of the Michigan Milk Production Association, six with the Board of the American Dairy Association, and 12 with the Dairy Council of Michigan. He owns a 230-acre farm in Jackson county.

He drove 100 miles to speak to the group Monday night.

## Girl Scout Association Meet Slated

The annual meeting of the Western Washtenaw Area Association of Girl Scouts will be held Monday, Jan. 29 at St. Andrew's United Church of Christ in the social hall. It will start at 8 p.m. Jean Galan will be speaking on "The Backbone of Scouting."

There will be an election of officers and a discussion about council meetings.

All registered adults with Girl Scout and Brownie troops, as well as leaders, are urged to attend this meeting.

It's strange how every mother is an expert cook, but no mother-in-law qualifies.

## Wall standards AND shelf brackets

BY **KV**

GIVE YOU SHELVES LIKE THESE IN MINUTES!

★ WALL STANDARDS 27" ft.

★ SHELF BRACKETS

6-inch ..... 44¢  
8-inch ..... 49¢  
10-inch ..... 53¢  
12-inch ..... 56¢

★ PREFINISHED SHELVES

(Walnut-Tone Luan)

8"x24" ...\$1.19 10"x24" \$1.49 12"x24" \$1.89  
8"x36" ...\$1.89 10"x36" \$2.29 12"x36" \$2.69  
8"x48" ...\$2.49 10"x48" \$2.99 12"x48" \$3.79

AT HOME SUPPLY HEADQUARTERS:

**CHELSEA LUMBER**



FARMERS NIGHT OUT: Sixty-five farmers accepted the Kiwanis Club's invitation to join the group for dinner Monday night. G. Dale Fast, executive director of St. Joseph County Agricultural Stabilization and Conservation Services, was the speaker.

er. Among the 106 present from left were Elmer Bristle, Norwin Lesser, William Bahnmiller, Dale Fast, Floyd Walz, James Marshall, Leigh Luick, Don Herrst, Walter Rothfuss, and Carroll Ordway.

## Strike Settled...

(Continued from page one)

The final agreement came the following afternoon.

Earlier, the CEA president had prophesied, "This dispute is going to be settled at the table. Firing the teachers is only going to create great educational turmoil in this community."

The board was not eager to put the Hutchinson Act in effect. It's costly and unpleasant. And yet, they knew it could be done. There exists a precedent: one Michigan school district did fire all 45 of its teachers.

Public involvement in the controversy was disappointing according to the CEA. Very few people came to their information station at the UAW Hall, Tuesday.

On the other hand, a few citizens attended the long, grueling meetings as a mediating force.

Some citizens complain that the issues were never clear. "The board never told us anything," said one citizen.

"Three years ago, a citizen group got the court injunction that stopped the strike," said Paul Terpstra, CEA negotiator, "and they found out how expensive it is. \$500 is a lot of money."

The teacher strike that closed schools for 18 days in 1969 ended when a judge locked the two warring factions in a room until a settlement was reached. When asked what percentage of the CEA would have jeopardized their livelihood by staying away through Monday, Solomon replied, "I have no way of knowing. It would have been an individual decision."

The new contract is being ready for presentation to the CEA membership. Once ratified, the retroactive salary increases go into effect. Back pay is due from Sept. 1.

Teachers can choose to pick up the lump sum or have it spread out over the rest of the semester.

The CEA and the board have yet to decide the school calendar. The dates for making up the strike days will be decided at that time.

### POSTAL WORKERS HOLIDAY

No mail will be delivered Thursday, Jan. 25, because of the Federal day of mourning for the late President Lyndon B. Johnson.

**GAMBLES**

110 N. MAIN, CHELSEA

PHONE 475-7472



"GEE! At these prices, even I'm impressed. Don't miss out on **RCA BARGAIN DAYS.**"

Beautiful savings! Beautiful new models! We have a flood and want to move them out fast. Save while the savings are great!

LAST THREE DAYS

**RCA XL-100**

Color you can Count on!

The Strongest Warranty In RCA History! 1 Year Parts/Labor



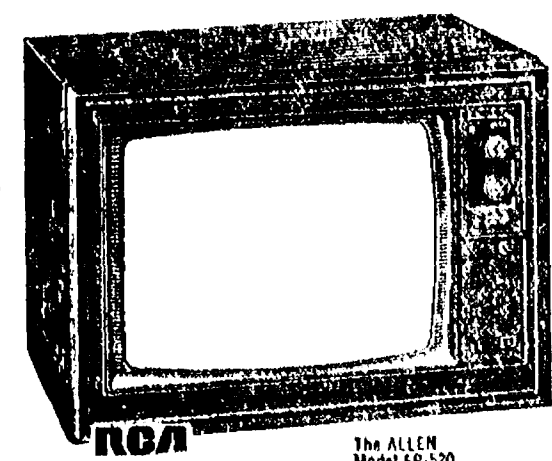
25" DIAGONAL

RCA The SELKIRK Model GR-723

**\$599<sup>95</sup>**

### BASIC PROVISIONS

If anything goes wrong with your new XL-100 set within a year from the day you buy it—and it's RCA's fault—RCA will pay your service agency its regular labor charge to fix it and make available new or, at RCA's option, rebuilt replacements for defective parts. Use any service shop you wish. If your set's a portable, take it in. On larger sets, your serviceman will come to your home. Present your warranty registration card and RCA pays his repair bill. If your picture tube becomes defective during the first two years RCA will exchange it for a rebuilt tube. (RCA pays installation during first year—you pay for it in the second year.) RCA's warranty covers every set defect. It doesn't cover set installation, foreign use, antenna systems or adjustment of customer controls.



RCA's fabulous XL-100 in a table model design

**\$549<sup>95</sup>**

• It's a table model with console performance • 100% solid state chassis • AccuMatic® color monitor • Automatic Fine Tuning

Fine Tuning

Save Now During "RCA Bargain Days"





**1101 M-52 CHELSEA**  
 NEW WINTER STORE HOURS:  
 Monday thru Saturday, 7 a.m. to 12 p.m.; Sunday, 7 a.m. to 7 p.m.

NO - CAL <b>POP 10<sup>c</sup></b> 16-Oz. N.R. Bottle	HI - C <b>DRINKS 25<sup>c</sup></b> 46-Oz. Can	FAMILY SCOTT TOILET <b>TISSUE 29<sup>c</sup></b> 4-Roll Pack	BOUNTY <b>TOWELS 29<sup>c</sup></b> Jumbo Roll
---	--	--	--



POLLY'S PRIDE U.S.D.A. CHOICE BEEF BLADE CUT

**CHUCK ROAST . . . lb. 68<sup>c</sup>**

FRESH GROUND BEEF

**HAMBURGER . . . lb. 69<sup>c</sup>**

SWIFT ROYAL ROCK OVEN READY

**TURKEYS . . . 16 to 20 lb. average lb. 39<sup>c</sup>**

U.S.D.A. CHOICE BEEF ENGLISH CUT OR ROUND BONE

**ROAST . . lb. 98<sup>c</sup>**

HYGRADE ALL MEAT CHUNK

**BOLOGNA lb. 59<sup>c</sup>**

FARMER PEET'S FARMHOUSE SLICED

**BACON . . lb. 69<sup>c</sup>**

FRESH PICNICS SLICED INTO

**PORK STEAK . . lb. 69<sup>c</sup>**

Hygrade All Meat Ball Park

**FRANKS . . . lb. 88<sup>c</sup>**

Hygrade All Meat Sportsman

**BOLOGNA . . . 12-Oz. Pkg. 79<sup>c</sup>**

FRESH TURKEY

**GIZZARDS . . . lb. 39<sup>c</sup>**

FRESH SLICED

**PORK LIVER . . lb. 49<sup>c</sup>**

Eckrich Regular or Thick Sliced

**BOLOGNA . . . lb. 99<sup>c</sup>**

ECKRICH ALL MEAT

**FUN FRANKS . . lb. 89<sup>c</sup>**

ECKRICH

**SMORGASPAC . . lb. \$1<sup>19</sup>**

12-OZ. ECKRICH ALL BEEF

**SMORGASPAC . . \$1<sup>09</sup>**

FRESH DRESSED PAN READY

**SMELT . . . lb. 59<sup>c</sup>**

FRESH FILLETS OCEAN

**PERCH . . . lb. 89<sup>c</sup>**

FRESH FROZEN FILLETS

**TURBOT . . . lb. 79<sup>c</sup>**

POLLY'S FRESH POTATO

**SALAD . . . lb. 49<sup>c</sup>**

POLLY'S FRESH

**COLE SLAW . . lb. 49<sup>c</sup>**

POLLY'S HONEY BAKED

**BEANS . . . lb. 49<sup>c</sup>**

U.S.D.A. CHOICE BEEF - 4-7 RIB

**STANDING RIB ROAST . . lb. \$1.19**

U.S.D.A. CHOICE BEEF

**RIB STEAKS . . . lb. \$1.39**

U.S.D.A. CHOICE BEEF BONELESS

**CLUB STEAKS . . . lb. \$1.99**

SEALTEST LOW FAT 1%

**MILK**

GALLON JUG

**89<sup>c</sup>**

1-LB. CTN. L'N'L

**COTTAGE CHEESE . . . 39<sup>c</sup>**

KEYKO

**MARGARINE . . . 28<sup>c</sup>**

2-LB. PKG. LAND O' LAKES GOLDEN VELVET

**CHEESE FOOD . . . 99<sup>c</sup>**

10-OZ. KRAFT HALF MOON

**CHEESE HORN . . . 69<sup>c</sup>**

1-LB. CARTON LAND O' LAKES

**BUTTER . . . 79<sup>c</sup>**

HOL'SUM SPLIT TOP

**BUTTER BREAD . . . 24-Oz. Loaf**

**VALUABLE COUPON**  
 SAVE 52c WITH COUPON  
 MAXWELL HOUSE  
**INSTANT COFFEE**  
 10-Oz. Jar **99<sup>c</sup>**  
 With \$3.00 purchase  
 LIMIT 1 EXPIRES JAN. 27, 1973

MAXWELL HOUSE INSTANT

**COFFEE . . . 10-Oz. Jar 99<sup>c</sup>**

SAVE 52c WITH COUPON

DEL MONTE

**TOMATO JUICE . . . 46-Oz. Can 38<sup>c</sup>**

ELF

**TOMATO CATSUP . . . 14-Oz. Bottle 11<sup>c</sup>**

VAN CAMP

**LIGHT TUNA . . . 6.5-Oz. Can 33<sup>c</sup>**

SMUCKER'S STRAWBERRY

**PRESERVES . . . 12-Oz. Jar 39<sup>c</sup>**

CAMPBELL'S CHICKEN

**NOODLE SOUP . . . 10-Oz. Can 16<sup>c</sup>**

SWISS MISS

**INSTANT COCOA . . . 14-Env. Pkg. 69<sup>c</sup>**

DEL MONTE CREAM STYLE OR WHOLE KERNEL

**GOLDEN CORN . . . 16-Oz. 20<sup>c</sup>**

EASY ON

**SPRAY STARCH . . . 22-Oz. 59<sup>c</sup>**

**VALUABLE COUPON**  
 SAVE 21c WITH COUPON  
 DOMINO  
**SUGAR**  
 5-Lb. Bag **48<sup>c</sup>**  
 With \$3.00 purchase  
 LIMIT 1 EXPIRES JAN. 27, 1973

DOMINO

**SUGAR . . . 5-Lb. bag 48<sup>c</sup>**

SAVE 21c WITH COUPON

DUNCAN HINES

**CAKE MIX . . 3 13-Oz. Pkgs. 69<sup>c</sup>**

SAVE 30c WITH COUPON

DETERGENT

**TIDE . . . 49-Oz. Box 66<sup>c</sup>**

SAVE 15c WITH COUPON

**VALUABLE COUPON**  
 SAVE 30c WITH COUPON  
 DUNCAN HINES  
**CAKE MIXES**  
 3 13-Oz. Pkgs. **69<sup>c</sup>**  
 With \$3.00 purchase. Limit 3  
 Lessor amounts Reg. Price  
 EXPIRES JAN. 27, 1973

16-OZ. ELF NON-DAIRY

**CREAMER . . . 59<sup>c</sup>**

25 LBS. ELF

**DOG FOOD . . . \$2.69**

1/2-GAL. ELF FABRIC

**SOFTENER . . . 49<sup>c</sup>**

32-OZ. DEBBIE LIQUID LEMON

**DETERGENT . . . 33<sup>c</sup>**

9-OZ. JIFFY

**CAKE MIXES . . 13<sup>c</sup>**

15-OZ. CAN ELF

**PORK & BEANS . . 16<sup>c</sup>**

18-OZ. PILLSBURY

**CAKE MIXES . . . 29<sup>c</sup>**

1-LB. PARKAY

**MARGARINE . . . 29<sup>c</sup>**

16-OZ. VLASIC SWEET

**PICKLES . . . 49<sup>c</sup>**

BORDEN'S OLD FASHION

**ICE CREAM**

SAVE 24c

Half Gallon

**69<sup>c</sup>**

BORDEN'S

**ICE CREAM BARS, 12 pak 59<sup>c</sup>**

12-OZ. BRIGHT AND EARLY

**ORANGE DRINK . . . 29<sup>c</sup>**

14-OZ. BANQUET FROZEN

**CREAM PIES . . . 28<sup>c</sup>**

**VALUABLE COUPON**  
 SAVE 15c WITH COUPON  
**TIDE DETERGENT**  
 49-Oz. Box **66<sup>c</sup>**  
 With \$3.00 purchase  
 LIMIT 1 EXPIRES JAN. 27, 1973

**RIGHT GUARD**

DEODORANT 4-Oz.

**66<sup>c</sup>**

6-OZ. **FORMULA '44' . . . \$1<sup>29</sup>**

3.1-OZ. VICKS **COUGH**

**VAPORUB . . . 79<sup>c</sup>**

3.3-OZ. VICKS

**COUGH**

**SYRUP . . . 59<sup>c</sup>**

SAVE 20c

**59<sup>c</sup>**



VINE RIPE

**TOMATOES . . . Lb. 49<sup>c</sup>**

TENDER PASCAL

**CELERY . . . Large Stalk 49<sup>c</sup>**

JUMBO YELLOW SWEET

**SPANISH ONIONS . . 2 lbs. 29<sup>c</sup>**

U. S. NO. 1 IDAHO BAKING

**POTATOES . . . 10 Lb. Bag 99<sup>c</sup>**

SWEET AND JUICY

**TANGELOS**

**79<sup>c</sup>**

FLAVORFUL

**RUTABAGAS**

**12<sup>c</sup>**

FOR BOILED DINNERS

**PARSNIPS**

**29<sup>c</sup>**









THE PLEASURE OF PARADISE: Mr. and Mrs. Earl Heim recently experienced the tropical farm convention, warm weather and lush landscapes of the Hawaiian Islands where they attended.

## Attend Ag Conference in Hawaii

Mr. and Mrs. Earl Heim of 14-487 Heim Rd., were among more than 400 farm couples who attended a national farm business conference in Honolulu, Hawaii, last week. The gathering was sponsored by Farm Wife News magazine.

The conference consisted of special seminars on farm management techniques, goal setting and agri-estate planning, plus tours of selected livestock and cropping facilities.

The farm couples flew to and from Hawaii in giant 747 jumbo jets, and stayed at the beautiful Sheraton Waikiki Hotel, located on famous Waikiki Beach at the edge of the Pacific. The conference included a mid-week flight to the island of Maui, where the farm group toured the research facilities of a major seed firm, and viewed no-tillage plots especially planted for the conference to show no-till crops in the growing stage.

According to the Heims, temperatures were in the high 70's and low 80's for the entire week. Just prior to departure, at the end of the week-long conference, the group toured Pearl Harbor and several more of Hawaii's scenic sites.

## Farm Workers Now Covered By Social Security

Farmers who hire extra agricultural laborers have until Jan. 31 to send 1972 wage reports and social security contributions to the Internal Revenue Service, according to Robert A. Kehoe, Social Security district manager in Ann Arbor.

"A farm worker is covered by Social Security if an employer paid him \$150 or more in cash wages for farm work in 1972—or if the employee did farm work for the employer on 20 or more days during the year for cash wages figured on a time basis rather than a piece-rate basis," Kehoe said.

Annual wage reports for farm employees are submitted by their employers on a form available at Internal Revenue Service offices. The form is mailed automatically to farmers once they have IRS employer identification numbers, according to Kehoe.

Social Security contributions for 1972 are 5.2 percent of the employee's covered wages plus a matching amount paid by the employer. The maximum amount of earnings that can count for Social Security and on which you pay Social Security contributions for 1972 is \$9,000.

"An employer must keep a record of his farm employees' wages if he expects they will be covered by social security," Kehoe said. "The record must show the worker's name, his correct Social Security number, cash wages paid to him, and Social Security deductions from his pay." There is no option about paying the tax, if wages total \$150, or the laborer worked on more than 20 days.

For questions about the forms, call IRS in Ann Arbor at 769-7100. Any other question relating to Social Security benefits and taxes should be referred to the Social Security office, 2929 Plymouth Rd., Ann Arbor 48107.

## Former Area Resident Sought on Charge of Passing Bad Checks

Chelsea Police Department has been issued a warrant for the arrest of Deborah S. Green, a former Grass Lake resident, who has passed bad checks in the Chelsea area.

Those knowing her whereabouts are asked to speak to the police. She is wanted for a felony.

Telephone Your Club News To 475-1371.

## Area Riders Win Titles at Horse Show

Area horses and riders took away four championships at Stony Ridge Farm's first open horse show of the winter season.

Chelsea's Scott Alder snapped up a first place with Tom, Terrific in the junior working hunter under saddle division. Mindy Moore did similarly in the equitation class for riders 17-and-under. Elizabeth Gosling won a maiden equitation over fences class.

Maureen Foley's mount, Country Bumpkin, owned by Kitty Wallace, took her to the green working hunter championship. With two blue ribbons to his credit, Last Laugh, ridden and owned by Linda Lovegren, was the champion in the junior working hunter division.

The combination of Penny Bartlett and her Daktari wrapped up two blues, one in the adult working hunter division, and the other under saddle in the adult division. Maggie Kaufman and her Captain Kidd won reserve championship honors in the green working hunter and first place in the under saddle class.

Mrs. Lynne Dermody took reserve title honors in the adult working hunter division and a first in an adult equitation class. Alley Oop, owned and shown by Shelly Spencer, ended up with reserve honors in the junior working class hunter division.

Pete Mathews rode Sally Kleinschmidt's San Luis Ray to a first place in the open working hunter area.

He was astride again, this time on Bonnie Thompson's Wings of Gold, when they took first place and reserve champion honors in the open working hunter classes. Miss Thompson also won an adult equitation class over fences.

Patti Wallace won a warm up class with Irish Coffee, and also placed first in an equitation on the flat for riders 17-and-under.

In open jumper classes, Paul Mathews was first on Mrs. Kleinschmidt's Episode.

Dottie Sippel was a winner in a maiden equitation class and rode her horse, Skyline, to a first in an open working hunter class.

Emily Iglehart rode Mrs. Ehrn's Salty to a victory in the adult workig hunter class. Liz Onlin did similarly in green working hunter under saddle competition.

## National Wildlife Federation Comments Mrs. Leon Chapman

Chelsea's Mrs. Leon Chapman has been supporting the National Wildlife Federation, with contributions and freely-given promotion for 15 years. This week she received a blue bound sponsor's certificate in appreciation of her years of help.

"I've always tried to support conservation," says Mrs. Chapman. "I guess I was interested in it because we always lived in the country."

After being first exposed to the National Wildlife Federation years ago, she began subscribing to the federation magazine, buying its stationery and Christmas cards. "I mention the Federation to as many people as possible," she adds.

The Federation's letter, which mentions that the organization runs solely on donations, thanked Mrs. Chapman for her generous support in the task of preserving the natural resources of the country. The accompanying sponsor's certificate "recognizes the assistance rendered to the cause of conservation."

MAN, THAT'S CORN!

For every man, woman and child in the United States, American farmers produced 27 bushels of corn during 1971.

## Linda Miller Will Graduate as Practical Nurse

Miss Linda S. Miller of 1770 N. Lima Center Rd., is one of 54 students graduating next Tuesday evening from a one-year program in Practical Nurse Education.

The ceremonies, which mark the end of the program conducted by the Ann Arbor Public Schools, will be at Huron High school auditorium, at 8 p.m. Commencement speaker will be Sister Mary Corita, RSM, assistant administrator of St. Joseph Mercy Hospital. Dr. Robert Potts, DD, human relations ombudsman with Ann Arbor Public Schools, will give the invocation and benediction.

Mae Edna Doyle, R.N., director of the program, will present greetings and introduce the faculty, and Earl Shaffer, director of occupational training, will present the certificates. The student response will be given by Mrs. June Neff.

Since the program began in September 1969, approximately 1,800 students have been graduated. The majority of these graduates are now working in hospitals, doctor's offices, and in a 11th agencies throughout southeastern Michigan.

A class of 60 students is admitted each September and February. Graduates of the program become licensed practical nurses upon passing the State Board of Nursing Licensure Examination.

## Dana Merges Hillsdale Division With Toledo Unit

The merger of Dana Corporation's Fluid Power Division, Hillsdale, with the Toledo-based Power Equipment Division has been announced by W. E. Herring, general manager of the Power Equipment Division.

Hydraulic products will continue to be manufactured at the Hillsdale facility under the direction of Paul Harman, plant manager, with engineering and sales activity being centralized in the Power Equipment Division's Power Take-Off Plant in Chelsea.

Joe Weber, previously resident manager of the Fluid Power Division, has been appointed General Sales Manager of Mobile Equipment Products. This product group includes the Chelsea - manufactured power takeoffs and gear boxes as well as Hillsdale - manufactured hydraulic products.

Future plans call for coordinating the designing of hydraulic pumps in conjunction with that of PTO's in order to offer a tailored "package" to the Mobile Equipment industry.

## Three from Chelsea Named to Honors List At Ferris State

Ferris State College in Big Rapids has honored 1,277 students for scholastic excellence during the fall quarter by naming them to the Academic Honors List. The names, which include Mary M. Baize, Joseph B. O'Neill and Lynn A. Visel of Chelsea, were released by Dr. James V. Farrell, vice-president for academic affairs.

To be named to the Academic Honors List a student must earn at least a 3.25 average on a 4.0 basis and carry a full academic load. The full load is defined as 14 quarter hours of credit.

Egg whites may be frozen in quantity in any moisture-proof container or, for handier use, may be frozen individually in plastic ice-cube containers. One egg white fits neatly into a single ice-cube compartment. After thawing, use them exactly as you would fresh egg whites.

Subscribe today to The Standard!



A QUARTER OF A CENTURY TOGETHER: Katherine and Arnel Minix, of 405 Railroad St., are not the first husband wife team to reach the 25-year mark at North American Rockwell, but they are the first to hit it in the same year. They both completed 25 years with the company Jan. 19. They are pictured here, flanked on the left by Don Baldwin, assistant plant manager, and on the right by Robert Rudd, plant manager.

## Named to Dean's List At Freed-Hardeman

Miss Pamela L. Parnell, daughter of Mr. and Mrs. R. D. Parnell of Greenville, S. C., has been placed on the Dean's List at Freed-Hardeman College, Henderson, Tenn., for the fall semester, 1972. In order to become eligible for the Dean's List, a student must earn a 3.00 or above (but below 3.50) grade point average and not have any grade below "C". This is based on a 4.00 scale.

Miss Parnell, a graduate of Chelsea High school, is majoring in liberal arts at Freed-Hardeman.

## HELLER ELECTRIC & INSULATING Now Edison Trained Electric Heat Dealer

Call us for estimates on all types of wiring.

We insulate old or new homes with Thermatron insulation and install electric heating systems.

CALL 475-7978 or 475-2096

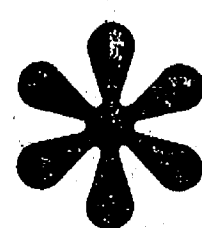
## REAL ESTATE ONE

WEED REALTY, INC., ASSOCIATES

REALTORS

475-8693

1196 W. 52, CHELSEA



we make house calls.

\*... and that's pretty unusual nowadays for any professional man... even an insurance professional. But you deserve that courtesy and service. Housecalls... another part of our "EVERYTHING YOU NEED" insurance program... from Charlie Foster and...



DAVE ROWE 475-8065



DOUG ROBESON 475-7389

FARM BUREAU INSURANCE GROUP TM

Farm Bureau Mutual • Farm Bureau Life Community Service Insurance • Community Service Acceptance

If you can't bank money, you can still **SAVE CASH** the Miles way...

• STEP BY STEP INSTRUCTIONS • FREE DELIVERY • RENT-SIZE PAYMENTS • IT'S FUN AND EASY

Bank money? Hard to do. Don't bother. Try this... the Miles way. Build a Miles Precut home. Worth thousands more than it costs. We pay top prices for your spare time. Beat the high cost of housing labor. Do it yourself and save up to \$12 per hour. No need to save cash for big down payment. We furnish everything, help pay for your foundation. Save on time, labor, and materials. Quit renting... now. We help you to help yourself.

PLEASE RUSH ME YOUR FREE CATALOG ON MILES BUILD IT YOURSELF HOMES



Name

Address

City, State, Zip

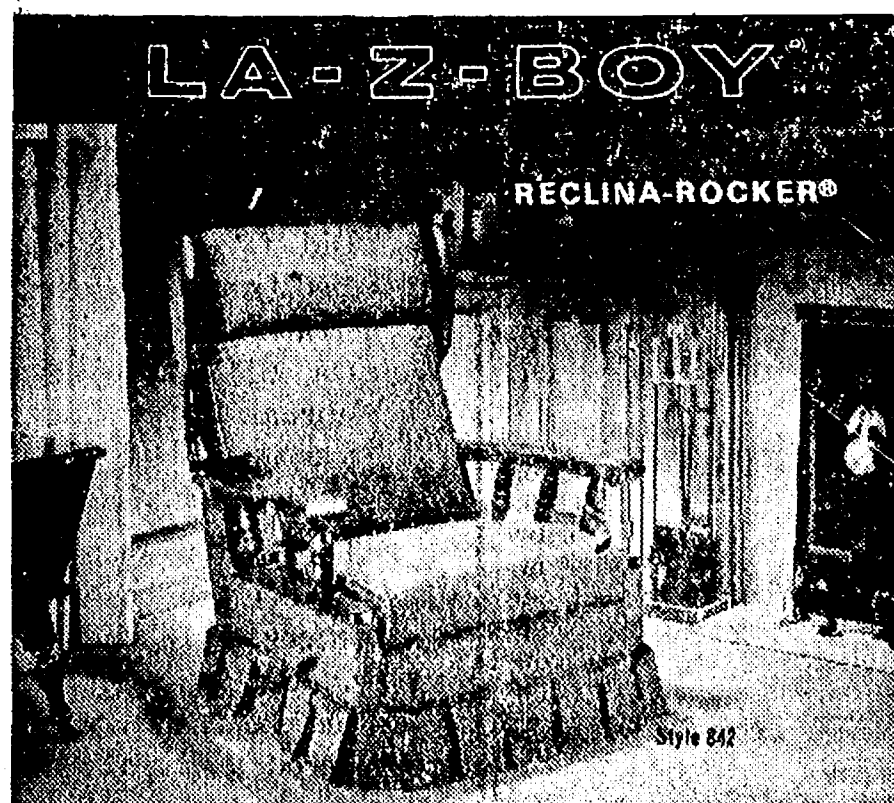
Precut MILES HOMES

17016 Mack Ave., Grosse Pointe, MI. 48236. Call 313-885-8549

There is a Miles local representative in your area

Handymen, be Homeowners

the Miles Way



This chair is destined to be sought after by every member of your family. The generous proportions are enhanced by the burnished dark pine finish of the wood accents. It is fully reclining. It's the rocker that doesn't look like a rocker. La-Z-Boy's exclusive Comfort Selector's three-position

leg-rest can be easily adjusted with or without reclining the chair. This gracious styling is certain to add charm and warmth to your home. A selection can be made from hundreds of attractive decorator colors and fabrics, most of them treated with Scotchgard Fabric Protector.



Merkel Home Furnishings

Open Mon. & Fri. Until 9

Ph. 475-8621

## STOCK REDUCTION SALE WARDROBES and UTILITY CABINETS

- |   |                          |
|---|--------------------------|
| 22" wide Wardrobe. Walnut finish. Reg. selling price \$24.95. SALE .....  | <b>\$19<sup>98</sup></b> |
| 30" wide Wardrobe. Walnut finish, with hat shelf. Reg. selling price \$29.95. SALE .....                                  | <b>\$24<sup>98</sup></b> |
| 36" wide Wardrobe. Walnut finish, with hat shelf. Reg. selling price \$34.50. SALE .....                                  | <b>\$28<sup>98</sup></b> |
| 40" wide Wardrobe Walnut finish, with hat shelf. Reg. selling price \$39.00. SALE .....                                   | <b>\$33<sup>98</sup></b> |
| 42" wide Wardrobe. Walnut grain doors, with hat shelf. Reg. selling price \$65.00. SALE .....                             | <b>\$49<sup>95</sup></b> |
| 36" Deluxe Walnut Finish Wardrobe with Mediterranean style heavy decorative doors. Reg. selling price \$89.00. SALE ..... | <b>\$69<sup>50</sup></b> |

**MERKEL BROTHERS**

Open Monday and Friday Until 9

Phone Chelsea 475-8621



## St. Louis School Notes

A group of juniors from Chelsea High, with Larry Doll as captain, came to the school for a basketball game Jan. 15, and won. The Roosters, having gained a new boy, Tim Hensley, who is 6 feet three inches tall, are looking forward to a victory next time.

Boy Scout leaders and den mothers arrived once again at school Wednesday, Jan. 17, to conduct another St. Louis school cub meeting. David Bowbeer, district executive, Charles Burgess, district organization and extension chairman, Donald Doll, institutional representative, and Otis Titus, district award chairman were all present.

The program opened with Bob Burgess' presentation of colors and a pledge of allegiance. The boys then divided into three groups in

which den mothers Mary Ann Burgess, Norma Seyfried and Alice Atkinson instructed the boys in saluting and the Cub Scout handshake. Bob Burgess circulated from den to den, assisting the mothers and offering some of his vast experience in scouting to the boys.

Bob Burgess presented 31 boys with the Bobcat pin which indicates that the boys have passed all requirements to be Cub Scouts. Doll was introduced as newly assigned institutional representative for the Knights of Columbus, sponsor of the St. Louis groups.

After the boys ate treats provided by their Den Mothers, Burgess led the closing ceremony with the Scoutmaster's sign of Reverence.

The boys and staff traveled to Crisler Arena, Saturday, for the Michigan-Purdue game. They were guests of Don Canham, athletic director at the University of Michigan. That evening the boys returned for a movie (complete with popcorn) shown by Father Germino.

The Rev. Fr. Klauke, parents and cheerleaders from St. Patrick's in Brighton accompanied their boys to a basketball game at the school Sunday afternoon. St. Patrick's was victorious by three points. After the competition, they were entertained by Father Umberto and his boys playing music from the St. Louis school album.

The Rev. Clive Dickens and counselors, Mrs. Gloria Greenleaf, Sandy Centilli, and the MYS group from the Methodist church came for a social hour with the boys, Sunday evening.

### New Corporations Increase in Past Year

Lansing—Michigan Department of Commerce Corporation and Securities Bureau records show 9,202 profit firms filed articles of incorporation during 1972, compared with 8,270 the previous year.

State Commerce Director Richard K. Helmbrecht said the increase "indicates a resurgence of confidence in Michigan's business climate."

He cited the improved promotional and economic expansion program proposed by the Governor and approved by the legislature last year, and Michigan's new corporation code which makes it easier for firms to do business here, as two reasons why the economic climate should continue to show improvement.

"Statistical evidence of burgeoning business activity is most heartening," Helmbrecht said. "We look forward to seeing these corporate activity figures reflected in the number of jobs available in Michigan."

## ASK THE GOVERNOR

by William G. Milliken

**Question:** Now that the State Lottery has been active for awhile, are there any figures on the amount of money it has brought in for the state?

**Answer:** During the first five weeks of operation, the Michigan State Lottery averaged sales of five million tickets per week, with the largest volume of sales—5.9 million tickets—coming during the first week of operation. As of this writing, (Dec. 21), the State Lottery has taken in \$9.85 million, with \$4.2 million going in prizes, \$400,000 going to the agents who handle sales and about \$5.2 million going into the state's general fund. My office estimates that over the period of one year, the State Lottery should bring a total of about \$60 million into the state treasury.

**Question:** Have read that traffic crashes caused by alcohol among 18 to 20-year-olds have gone way up since the Age of Majority law was adopted. Why isn't anything being done to cut those crashes down?

**Answer:** It is true that alcohol-related traffic crashes among young adults have risen substantially during the past year. However, it is important to recognize that this problem is not confined solely to 18- to 20-year-olds, but is the number one traffic safety problem among all age groups. National estimates maintain that more than 50 percent of all traffic fatalities are linked in one way or another to the consumption of alcoholic beverages, and we have experienced an increase in alcohol-related traffic crashes among all age groups in Michigan this year.

Michigan has taken a number of steps to alleviate this critical problem, including lowering the maximum blood alcohol level in drunk driving cases from .15 percent to .10 percent and activating special enforcement forces in several communities throughout the state. Additionally, I am currently in the process of revitalizing my Task Force on the Drinking Driver Problem and charging it with developing additional solutions to this pressing problem.

However, above and beyond the steps that state government can take, each and every driver in Michigan bears a personal responsibility

to help reduce the tragic toll of alcohol related traffic crashes.

**Question:** Now that the Legislature is done for the year, do you have any reaction to its performance?

**Answer:** In my judgment, the 1972 session of the legislature was the most fruitful I have seen since I first came to Lansing as a State Senator in 1961.

Of the 20 major pieces of legislation which were vehicles for programs promoted by me 18 were passed including vitally needed improvements in transportation, housing, the juvenile code, and environmental protection. We also saw adoption of a statewide construction code, nofault automobile insurance, a presidential primary and the Equal Rights Amendment to the United States Constitution—all of which were supported by me.

All in all, I believe that the leadership and membership of both houses deserve special commendation for 1972's fine record of bipartisan accomplishment.

**Question:** I am a hunter and fisherman living in the northern part of the state. I understand that Michigan now has some kind of a special license which would allow me to hunt and fish for anything on one license. Can you tell me a little about it?

**Answer:** Since 1971, the Michigan Department of Natural Resources has offered for sale a unique "Sportsman's License" which permits the purchaser to engage in all hunting, fishing, and trapping activities in the state, except deer and other trapping. This special license is available to all residents of the state who are 17 years of age or older, and is good from Sept. 1 to the following Aug. 31 for hunting, and until the following Sept. 30 for fishing.

The Sportsman's License sells for \$18.50, as opposed to the \$34 which would be charged if all hunting, fishing and trapping licenses were purchased individually. In 1971, the DNR reported sales of 56,096 of these licenses, and estimates that more than 80,000 have been sold during 1972. The 1972-73 Sportsman's License is now available at nearly all of the 2,900 licensing agencies throughout the state.

## The Safety Value

**Question:** About how many "Driving Under the Influence" (more commonly referred to as drunk driving) arrests are made annually in Michigan? L. T. D., Chelsea.

**Answer:** In Michigan in 1972, through November, there were 26,122 such arrests made, an increase of 33.7 percent over 1971. This represents activity of all police agencies in the state.

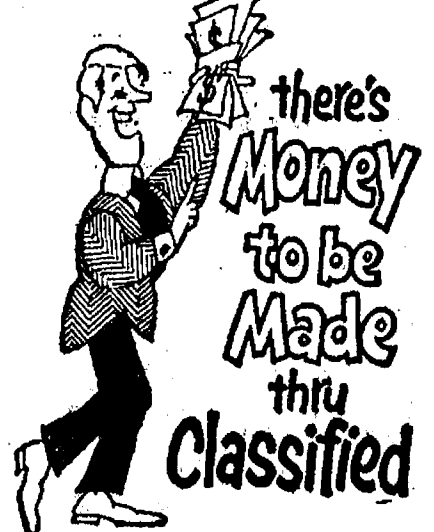
**Question:** I thought the state would let you accumulate 12 points against your driving record before suspending it (as long as none of the violations incurred would require an automatic suspension or revocation). I got a letter from the Department of State calling me in for an interview when I only had nine points and when I didn't appear, the director sent me notice my license was being revoked. P. M. S.

**Answer:** This looks like you got caught by two different paragraphs from the Michigan Vehicle Code. One says, "If a person has accumulated 9 points as provided herein, the director may call said person in for an interview as to his driving ability and record after due notice as to time and place of said interview. In the event the person fails to appear as provided herein, the director shall add 3 points to his record."

The law continues, "... whenever any person has been charged against him a total of 12 or more points as provided in section 320a within a period of two years, the commissioner, after notice as here-

inafter provided to such person, may conduct an investigation and require an examination of such person in the county where such a person may reside, and upon good cause appearing thereon, may thereupon recommend to the department the suspension or revocation of the license of such person or may require the immediate surrender of the license of each person, which together with a recommendation as to the period of suspension or revocation, shall be forwarded to the department. The commissioner shall, in all cases, prescribe the period of suspension and the recommendation of the commissioner in the premises shall in all cases, be binding upon and followed by the department." Nine plus three equals twelve!

United States' egg production hit a record high of 71.6 billion eggs during 1971, up 2 percent from the previous high (of 70.0 billion) produced during 1970.



Right start money-making FEEDS

Step up milk production, with Dairy Feeds, scientifically formulated, balanced and blended to make more milk, and more profits.

Complete feeding rations for all your livestock, poultry.

**FARMERS' SUPPLY CO.**

PHONE GR 5-5511

## Old-Time Railroad Depots Now Serve Many New Uses

Surprises are in store for those who like to see what has happened to old railroad depots around the state which no longer serve passenger traffic. Visiting them has become a growing pastime, according to Automobile Club of Michigan.

These one-time railroad stations, most of them built in the 1880's and early 20th century, were exciting, busy community centers in their heyday. Many still are.

Take, for instance, the old depot at Indian River, built by the New York Central Railroad in 1877. It is now an antique and gift shop.

For four generations, people were greeted or bid goodbye at this old depot. They came to Indian River to go to their summer homes on Burt, Mullett and other nearby lakes.

The little frame depot, painted a glistening white, looks different now. Baskets filled with red geraniums hang from corners of the eaves. Flower boxes below the windows are massed with red geraniums and pink and white petunias. A border of evergreens, junipers and arbutus is along the front.

The depot was sold in 1961 and since has been called "Of Cabbages and Kings," a gift shop which contains much railroad memorabilia. No structural changes have been made by the present owner.

Stay on M-27 as you travel north and you'll come to the old depot at Topinabee, used now as a community center by Topinabee township.

A few miles farther along, leave M-27 at Mullett Lake Dr., and you will find that the Mullett Lake depot has been converted into a summer home.

At Marquette in the Upper Peninsula, the old two-story brick depot on Main St., now is the Marquette Community Center. The structure was built in 1901 by the Duluth, South Shore and Atlantic Railroad.

At Petoskey, on Little Traverse Bay, a little wooden depot built in 1901 and last used by the Chesapeake & Ohio Railway, is now owned by the city and being restored as a museum.

The depot at Alden, near Manicella, is still owned by the C & O, but has been leased to a group of its employees who use it as a summer cottage.

The station at West Branch, formerly owned by the Penn Central, has been a combination barber shop and hardware store since 1968.

Back in the southern part of Michigan, you might drive to Kalamazoo for a meal at "The Whistle Stop," a restaurant in the old Pennsylvania Railroad depot. Here

the atmosphere is early 1900, with valuable antiques such as a signed Tiffany lamp, as well as the old depot's waiting room benches now upholstered in tufted leather to make comfortable banquettes for diners.

Other depots also have become restaurants, a growing usage.

One is the former Penn Central station in Ann Arbor, built in 1888. Remodeled, it features much railroad memorabilia.

The Grand Trunk Western railroad in Lansing is the latest large station to be turned into a restaurant. It is scheduled for opening in mid-November.

At Charlotte, the 1902 Michigan Central depot made a comeback 63 years later, also as an eating place.

Now known as the Old Depot Ice Cream Parlor and operated by the Miller Dairy Farms of Eaton Rapids, a turn of the century atmosphere has been recreated in the old structure. Much of the interior decor has been retained, with other and newer furnishings also providing an oldtime motif. The bill of fare includes all ice cream and milk combinations, with "Super-Duper" sundaes, a large selection of sandwiches and soft drinks.

A depot now located near Romeo is owned by Bob Owen and operated as both a museum and sign shop. The depot formerly was located at Washington and owned by the Grand Trunk Western Railroad, but a condition of the sale to Owen was that it be moved from the railroad right-of-way. The old depot was what was called a combination station, handling both passengers and freight. The depot is about three miles south of Romeo, on M-53 at Van Dyke and 29 Mile Rds.

Another station which has started a new career is the Ann Arbor Railroad depot in Howell, which has been converted into a museum by the Livingston County Historical Society and is open to the public. The old depot is a Michigan historic site.

Other small depots in the state,

some nearly or already abandoned by their railroad owners, likely will be sold in the future and get a new lease on life. The trend from railroad transportation also may portend a new future for larger stations as well.

But one thing appears certain. Railroad depots will be with us for a long time, in one form or another.

## Junior High Age Young People Invited To Dance at St. Paul's

St. Paul United Church of Christ Junior High Fellowship is inviting all 7th and 8th graders to a dance at the church this Saturday night. The dance, which will be between 7:30 and 10 p.m., Jan. 27, is open to all Chelsea youths of that age. No tickets are needed to attend, but a small charge of 25 cents will be taken at the Fellowship Hall.

Telephone Your Club News To 475-1371.

**PROBLEMS??**

**That's why we're here!**

Trust us. We're the guys who know the inside story... and our shop is equipped for any car emergency. Service is our specialty. So bring your problems to us.

**TIRES - BATTERIES - ELECTRONIC TUNE-UPS**  
**BRAKE SERVICE - WHEEL ALIGNMENT - WRECKER SERVICE**

**Fred's Standard Service**

889 S. Main, Chelsea Phone 475-2804

**LaFONTE Construction & Development Corp.**

GENERAL CONTRACTORS

**Will Build To Your Specifications**

**CUSTOM BUILDER - Residential, Commercial, Industrial**

COMPLETE HOME MODERNIZATION SPECIALISTS

★ Additions	★ Rec. Rooms	★ Cement Work
★ Family Rooms	★ Roofing	★ Kitchens
★ Attics	★ Siding	★ Patios

FREE ESTIMATES  
LICENSED BUILDERS

**PHONE 475-1389**  
525 N. MAIN, CHELSEA

**REAL ESTATE ADVICE**

RESIDENTIAL PROPERTIES  
COMMERCIAL - INDUSTRIAL  
FARMS  
VACANT LANDS

**SPEAR & ASSOCIATES, REALTORS**

1935 Pauline Plaza 769-5750

**PUBLIC HEARING NOTICE**

For Lyndon Township residents on the Conditional Use Permit, 7970 Clark's Lake Rd.

**TUESDAY, JANUARY 30, 1973**  
8 p.m., at Lyndon Township Hall

**LYNDON TOWNSHIP**  
DORIS FUHRMANN, CLERK

**NORTHSIDE TOWING**

Servicing the Greater Ann Arbor-Saline Area

DIVISION OF NORTHSIDE INC.  
**24 Hr. Radio Dispatched Service**

**COMPLETE ROAD SERVICE**  
CLOSE TO CAMPUS & HOSPITALS - MINUTES FROM I-94 & US-23

**TOWING ANYWHERE**  
**AUTO & COMMERCIAL**  
LARGE - MEDIUM & SMALL WRECKERS  
**WE TOW CORVETTES - CLASSICS**  
**FOREIGN CARS - 4 WHEEL DRIVE & PARKING RAMP EQUIP.**

**769-9444**

AMOCO MOTOR CLUB

3127 S. Wagner Rd  
ANN ARBOR

**Mm-love that milk, Mom!**

Children enjoy our good-tasting milk at meals, for snacks and poured plenty on cereals. Our customers are happy knowing they are getting the best... In rich vitamins and minerals for body-building energy. Try it with chocolate syrup or strawberry juice, too!

**HICKORY RIDGE FARM DAIRY**  
Ph. Stockbridge (517) 851-3000

FOR A HAPPIER tomorrow

**5% PASSBOOK SAVINGS ACCOUNTS**

Make Deposits or Withdrawals Anytime Without Loss of Interest. No Minimum Term.

We pay the highest interest rate on Passbook Savings... 5% daily interest, effective annual rate 5.09%. Your funds are always immediately available and earn interest from day of deposit to day of withdrawal. Deposit or withdraw any amount any time.

We pay 5 1/4% on Passbook Certificate Accounts with one year maturity and minimum deposit of \$1000 or more. We pay 5% on \$5000 or more with two year maturity. And we pay 6% on \$5000 or more with three, four or five year maturity.

Whatever it takes to brighten your future, a home, a buffer against emergencies, education, retirement reserve... you want your money where it grows faster, safely and is readily accessible. That's Ann Arbor Federal Savings.

Build your happier tomorrow at AAFS.

**ANN ARBOR AAFS FEDERAL SAVINGS**

ANN ARBOR OFFICES: Downtown, Liberty at Division; Westside, Pauline at Stadium; Eastside, Huron Parkway at Platt; Northside, Plymouth at Nixon; CHELSEA - Main Street near Old US 12  
Member: Federal Home Loan Bank System • Federal Savings and Loan Insurance Corporation

**5% PER ANNUM**

**DAILY INTEREST**







## + Services in Our Churches +

**ST. PAUL UNITED CHURCH OF CHRIST**  
The Rev. Warner Siebert, Pastor  
Saturday, Jan. 27—  
9:00 a.m.—JYP Program.  
Sunday, Jan. 28—  
9:15 a.m.—Church school.  
10:30 a.m.—Worship. Sermon title: "Strange Rewards." New members received. Coffee hour.  
2:30 p.m.—Christian Education Workshop at Bethel United Church of Christ, Manchester.  
Courier articles due.  
Wednesday, Jan. 31—  
3:30 p.m.—Children's Choir.  
8:00 p.m.—Chancel Choir.  
Courier mailing committee.

**ST. THOMAS EVANGELICAL LUTHERAN**  
Ellsworth and Haab Rds.  
The Rev. Daniel L. Mattson, Pastor  
Saturday, Jan. 27—  
9:00 a.m.—Confirmation class.  
Sunday, Jan. 28—  
10:00 a.m.—Worship.  
11:00 a.m.—Sunday school and Bible class.  
Tuesday, Jan. 30—  
10:00 a.m.—Bible study.  
Wednesday, Jan. 31—  
8:00 p.m.—Choir rehearsal.

**NORTH SHARON COMMUNITY BIBLE CHURCH**  
Sylvan and Washburn Rds.  
The Rev. William Ensien, Pastor  
Every Sunday—  
10:00 a.m.—Sunday school.  
11:00 a.m.—Worship service.  
(Nursery will be available.) Junior church classes.  
6:00 p.m.—Senior High Youth meeting. Youth Choir.  
7:00 p.m.—Evening worship services. (Nursery available.)  
Every Wednesday—  
7:00 p.m.—Bible study and prayer meeting. (Nursery available.)  
Bus transportation available: 428-7222.

**NORTH LAKE UNITED METHODIST CHURCH**  
The Rev. Harry Weeks, Pastor  
Every Sunday—  
9:30 a.m.—Worship service.  
10:30 a.m.—Sunday school.  
Every Tuesday—  
7:00 p.m.—Choir rehearsal.  
Every Thursday—  
4:00 p.m.—Children's Choir rehearsal.  
First Wednesday—  
9:30 a.m.—Jane Circle.  
Second Tuesday—  
UMWCS.

**CHELSEA BAPTIST CHURCH**  
337 Wilkinson  
The Rev. James Stacey, Pastor  
Every Sunday—  
9:45 a.m.—Sunday school.  
11:00 a.m.—Worship service.  
Nursery care available during all services.  
6:00 p.m.—Junior and Senior Baptist Youth Fellowship.  
7:00 p.m.—Evening service.  
Every Wednesday—  
7:00 p.m.—Bible study and prayer meeting.

**FIRST CHURCH OF CHRIST, SCIENTIST**  
1893 Washtenaw Ave., Ann Arbor  
Every Sunday—  
10:30 a.m.—Sunday school; morning service.

**FIRST UNITED METHODIST CHURCH**  
The Rev. Clive Dickens, Pastor  
Thursday, Jan. 25—  
7:30 p.m.—Lenten planning committee meeting at the home of Mr. and Mrs. Ed Brown.  
Sunday, Jan. 28—  
9:00 a.m.—Church school. Nursery through adult.  
10:00 a.m.—Worship.  
Chaplain Paulsen of Cassidy Lake will be the guest speaker.  
6:00 p.m.—Junior High UMYF. Bible baseball challenge with St. Paul youth.  
6:30 p.m.—Senior High UMYF.  
Tuesday, Jan. 30—  
6:30 p.m.—Family pot-luck dinner with John Finney, missionary from India.  
7:30 p.m.—Slide presentation by Mr. Finney.  
Wednesday, Jan. 31—  
3:30 p.m.—Primary Choir.  
4:00 p.m.—Junior Choir.  
8:00 p.m.—Chancel Choir.

**IMMANUEL BIBLE CHURCH**  
145 E. Summit St.  
The Rev. LeRoy Johnson, Pastor  
Every Sunday—  
9:45 a.m.—Sunday school, nursery provided.  
11:00 a.m.—Morning worship, nursery provided.  
Every Wednesday—  
7:30 p.m.—Family hour, prayer meeting and Bible study.  
First Sunday of Month—  
7:00 p.m.—Communion service.

**BAHA'I FIRESIDE**  
Every Thursday—  
8:00 p.m.—At the home of Toby Peterson, 705 S. Main St. Anyone wishing to learn about the Baha'i faith is welcome.

**CHELSEA MEDICAL CENTER**  
Every Other Wednesday—  
1:30 p.m.—Worship service.

**ST. JOHN'S EVANGELICAL AND REFORMED CHURCH**  
(United Church of Christ)  
Francisco  
The Rev. Robert Townley, Pastor  
Every Sunday—  
10:00 a.m.—Worship service.  
10:20 a.m.—Sunday school.

**ST. BARNABAS EPISCOPAL CHURCH**  
20550 Old US-12  
The Rev. C. Walton Fitch, Vicar  
Telephone 428-8815  
Every Sunday—  
9:15 a.m.—Holy Communion.  
9:15 a.m.—Morning Prayer, second and fourth Sundays.

**ST. JACOB EVANGELICAL LUTHERAN CHURCH**  
12501 Riethmiller Rd., Grass Lake  
The Rev. Andrew Bloom, Pastor  
Every Sunday—  
9:00 a.m.—Worship service.  
10:15 a.m.—Livine services.

**FIRST ASSEMBLY OF GOD**  
The Rev. Thode B. Thodeson, Pastor  
Every Sunday—  
9:45 a.m.—Sunday school.  
11:00 a.m.—Worship service.  
7:00 p.m.—Evangelistic service.  
Every Wednesday—  
7:00 p.m.—Midweek services.

**SALEM GROVE UNITED METHODIST CHURCH**  
The Rev. Harry Weeks, Pastor  
Every Saturday—  
2:30 p.m.—Choir rehearsal.  
Every Sunday—  
10:00 a.m.—Sunday school.  
11:00 a.m.—Worship service.  
Every Thursday—  
4:00 p.m.—Children's Choir rehearsal.  
First Wednesday—  
2:00 p.m.—Church Women meeting.

**OUR SAVIOUR LUTHERAN CHURCH**  
The Rev. William H. Keller, Pastor  
1515 S. Main, Chelsea  
Each Sunday—  
9:00 a.m.—Sunday school.  
10:30 a.m.—Worship service.

**VILLAGE UNITED METHODIST CHURCH OF WATERLOO**  
8118 Washington St.  
The Rev. Altha Barnes, Pastor  
Every Sunday—  
10:00 a.m.—Sunday school.  
11:15 a.m.—Morning worship.

**FIRST UNITED PRESBYTERIAN CHURCH**  
Unadilla  
The Rev. T. H. Liang  
Every Sunday—  
9:45 a.m.—Sunday school.  
11:00 a.m.—Worship service.  
Every Tuesday—  
8:00 p.m.—Choir practice.

**METHODIST HOME CHAPEL**  
The Rev. R. L. Clemans, Chaplain  
Every Sunday—  
8:45 a.m.—Worship service.

**ST. JOHN'S EVANGELICAL AND REFORMED CHURCH**  
(United Church of Christ)  
Rogers Corners  
The Rev. Richard Campbell, Pastor  
Every Sunday—  
9:30 a.m.—Sunday school.  
10:30 a.m.—Morning worship.

**CONGREGATIONAL CHURCH**  
(United Church of Christ)  
The Rev. Paul Gerhart, Pastor  
Saturday, Jan. 27—  
church. Garland DeYoe, host.  
Sunday, Jan. 28—  
10:00 a.m.—Morning worship.  
Sunday school.

**ST. MARY CATHOLIC CHURCH**  
The Rev. Fr. David Philip Dupuis, Pastor  
Every Saturday—  
7:30 p.m.—Mass.  
Every Sunday—  
6:30, 8:00, 10:00, 11:30 a.m.—Mass.

**ZION LUTHERAN CHURCH**  
Corner of Fletcher, Waters Rds. (Rogers Corners)  
The Rev. John R. Morris, Pastor  
Saturday, Jan. 27—  
Youth instruction classes.  
Sunday, Jan. 28—  
9:00 a.m.—Sunday school.  
10:15 a.m.—Worship.  
1:00 p.m.—Conference. Luther League Winter Outing.  
Monday, Jan. 29—  
7:15 p.m.—Junior Choir.  
8:00 p.m.—Senior Choir.

**FIRST UNITED METHODIST PARKS AND TERRITORIAL RDS.**  
The Rev. Altha Barnes, Pastor  
Every Sunday—  
9:15 a.m.—Morning worship.

**CHURCH OF CHRIST**  
13661 Old US-12, East  
David A. Rushlow, Pastor  
Every Sunday—  
10:00 a.m.—Church school.  
11:00 a.m.—Worship service.  
Nursery will be available.  
6:00 p.m.—Worship service.  
Every Wednesday—  
7:30 p.m.—Bible Study.

**GREGORY BAPTIST CHURCH**  
The Rev. Grant Lapham, Pastor  
Every Sunday—  
10:00 a.m.—Worship.  
10:00 a.m.—Sunday school.  
7:30 p.m.—Evening worship service.

**BETHEL EVANGELICAL AND REFORMED CHURCH**  
(United Church of Christ)  
Freedom Township  
The Rev. Roman A. Reineck  
Every Sunday—  
10:00 a.m.—Worship.

### The Embers Trio Will Appear at Immanuel Church

Immanuel Bible church presents a special evening of gospel music this Saturday, at 7:30 p.m., with The Embers, an outstanding trio from Akron, O.

The Embers have as their slogan—"The good old gospel—a good new way." This is a summation of their interpretation of gospel music, and of their fine and dedicated talent which spreads the gospel through the medium of song.

Come and see this group at Immanuel Bible church, 145 E. Summit St. There is no admission charge, but a free-will offering will be taken. Everyone is invited!

## Red Cross Lists Safeguards Against Injury from Falls

In the home  
Except in claspstick comedies, falls aren't funny.  
"On the contrary, in real life they take life, and they are especially dangerous for men and women in the over-65-years bracket," Dr. James M. Winkler, Washtenaw county American Red Cross first aid chairman, points out.  
"Of the 17,000 persons who were fatally injured in falls last year, 12,700—nearly 71 percent—were more than 65 years old," Dr. Winkler added. "This means that older persons should take extra care to avoid falling."  
As a first step against accidental falls, Dr. Winkler urged people of all ages to take a Red Cross first aid course. These courses teach accident prevention by making people more conscious of accident causes and also enables them to give emergency care to the injured when accidents occur.  
Dr. Winkler urged observance of the following precautions to reduce the hazards of falls indoors and out:  
Keep floors free from spilled foods or liquids. Wipe them up immediately.  
Fasten loose materials, such as throw rugs, to the floor, or use a non-skid backing on them.  
Repair or replace floor covering that causes uneven walking surfaces.  
Keep walking surfaces clear of tools, toys, pencils, and similar objects that can cause slipping and stumbling. An unobstructed walking surface is particularly important in poorly lighted passages and stairways.  
Use secure stepladders and stepstools to extend the reach. When using a stepladder or stepstool, maintain a handhold at all times. Do not use chairs, tables, and boxes as substitutes for ladders. Check ladders and stools for defects before using them. Lock and check the spreader before use.  
Provide for well lighted surfaces. Install adequate lighting where it is not already available. Provide switches at top and bottom of stairs. Use a flashlight when it is needed.  
Provide guards at top and bottom of stairs to keep young children off steps.  
Mark bottom and top of stairways to indicate both bottom and top steps.  
Provide sturdy handrails on all stairways.  
Provide and use secure handholds in bathtubs and showers. Equip tubs and showers with non-skid surfaces.

## County Soil Survey Makes Progress in '72

By James Barnes, Soil Scientist  
U. S. Soil Conservation Service  
During 1972 the Washtenaw county Soil Survey Party completed new soil maps on 49,828 acres of county land. Sylvan and Bridge-water townships were completed, as well as portions of Lyndon mapped since the survey began in 1968 is 410,816 acres. During 1973, the final year of the survey, 47,424 acres remain to be mapped.  
The soil survey is a co-operative project between the U. S. Soil Conservation Service, the Michigan Agricultural Experiment Station, and the Washtenaw County Board of Commissioners. The 1972 survey party consisted of Neil Stroessneuer and James Barnes of the Soil Conservation Service and Peter Davis, Ames Manor, and Dave McAlpine of the Michigan Agricultural Experiment Station.  
The survey provides an acre-by-acre analysis of the county's soils. Soil scientists examine the soil and record characteristics that affect its use for agriculture, recreation, or urban development. These characteristics include texture, structure, natural drainage, percolation rate and lime content. This information is used to separate soils and is recorded on aerial photographs.  
The resulting soils map is an invaluable guide for use in the reduction of environmental pollution. Health departments, planning commissions, and individuals will find the soils map useful to locate areas that have only slight limitations for septic tank disposal fields, lagoons, and sanitary landfills. Farmers can use the soils map to locate areas to spread animal wastes that have the least potential to pollute streams or ground water supplies. Developers can also make good use of these soil maps.  
Soils map information for townships that have been completed are available through the Soil Conservation District office at 6101 Jackson Rd., Ann Arbor 48103.

Telephone Your Club News To 475-1371.

## CHELSEA VILLAGE COUNCIL PROCEEDINGS

January 18, 1973  
Regular Session.  
This meeting was called to order by President Pro-Tem Musbach at 7:30 p.m.  
Present: President Pro-Tem Musbach, Clerk Pennington, Administrator Weber, Trustees Present: Gorton, Dmoch, Boylan, Wood and Borton. Absent: President Fuks.  
Others Present: C. Hafner, S. Haddock, D. Ewald, F. Belser, Police Chief Meranuck, D. Pennington, J. Liebeck, H. Jones, H. Hauenstein, W. Brown, G. Palmer, J. Grau, D. Sprow and R. Thornton.  
Police Chief Meranuck presented a yearly police report and comparison to previous years. There was a marked increase in over-all crime during 1972.  
Mr. Don Pennington, from the Washtenaw County Metropolitan Planning Commission, gave an excellent presentation on Washtenaw County present and future.  
Mr. Walt Brown and the Village Planning Committee were present for general discussion on ordinance planning.  
Mr. Dave Sprow, of the Michigan Department of Public Health, was present for discussion of sewer expansion and waste-water treatment facilities. Section B, SANITARY SEWER PLANS, was given verbal approval by Mr. Sprow as per the Village application.  
A motion by Gorton supported by Borton to appoint Mr. Frederick Weber as Village Assessor until the March 1973 election; also, to appoint Mr. Weber as Building Inspector until line is permanently appointed. Roll call: Yeas, Borton, Gorton, Boylan, Dmoch, Nays: Wood. Motion carried.  
A motion to ratify the Fire Protection Agreements between the Village of Chelsea and the Townships of Sylvan, Lima, Sharon, Freedom, Dexter and Lyndon in Washtenaw County and Waterloo in Jackson County; and to authorize the President and Clerk to sign said agreements for the Village. This motion by Borton supported by Wood. Roll call: Yeas all. Motion carried.  
Motion to schedule a special meeting on Tuesday, January 30, 1973 at 7:30 p.m. for sale of the General Obligation Sanitary Sewer Bonds. The motion was made by Dmoch, supported by Gorton. Roll call: Yeas all. Motion carried.  
Authorization to pay Washtenaw Engineering \$1,300.00 for services performed in connection with the Sewer Trunk Expansion Project. Payment shall be from the Electric Fund, and same sum shall be repaid from said fund upon sale of the sewer bonds. The motion was made by Wood, supported by Borton. Roll call: Yeas all. Motion carried.  
Motion to issue call for caucus for the 1973 Village Election, February 19, 1973 at 7:30 p.m. in the Council Room of the Municipal Building. Motion by Gorton, supported by Wood. Roll call: Yeas all. Motion carried.  
A request for a sign variance at 1196 S. Main Street was referred to the Planning Commission for further action.  
A motion by Borton, supported by Wood to deny a request for a temporary sign at the 1196 S. Main Street location. Roll call: Yeas all. Motion carried.  
The on-job inspection of the Sewer Trunk Construction was reviewed with Mr. James Grau. Further action will be taken at the next meeting.  
A motion by Boylan, supported by Wood, to pay bill as submitted. Roll call: Yeas all. Motion carried.  
A motion by Boylan, supported by Gorton, to adjourn. Roll call: Yeas all. Motion carried.  
Hal Pennington, Clerk.

## MOBIL Glenn's Mobil Service M-52 and I-94

### FREE 10W-40 Oil Change and Filter with TUNE-UP

Consists of spark plugs, points, condenser, set timing and dwell.

V-8 - \$34.95 plus tax

6-Cyl. - \$28.95 plus tax

GLENN HEIM, Prop.

## REAL ESTATE ONE WEED REALTY, INC., ASSOCIATES REALTORS 475-8693 1196 M-52, CHELSEA

## SINCLAIR CUSTOM DRAPERY SALE SAVE 20%



2 WEEKS ONLY  
JAN. 18 thru FEB. 1  
STORE-WIDE FURNITURE SALE NOW IN PROGRESS

**Merhel**  
HOME FURNISHINGS

## \$300 Allowance For Any Car

On All Cars!! \$300 Allowance Regardless of Age, Make or Model. If need be, we will even tow. This is the minimum. Hundreds more depending on year and condition.



John Popovich



Jack Becroft



Lyle Chriswell



Ken Hofmann

**1966 Buick 2-dr. hardtop** \$295  
V-8, Automatic. Min. Allowed 300  
??

**1963 Ford 4-dr. Sedan** \$395  
V-8, Runs OK. Min. Allowed 300  
\$ 95

**1965 Fairlane Station Wgn.** \$495  
6-Cyl., Std. Transmission. Good Transportation. Min. Allowed 300  
\$95

**1967 International Pick-up** \$695  
V-8, 4-Speed. Min. Allowed 300  
\$395

**1969 Galaxie 500 4-dr.** \$1295  
V-8, Automatic, one owner. Min. Allowed 300  
\$995

**1971 Galaxie 500 4-dr.** \$2595  
V-8, Automatic. Factory air conditioning. Min. Allowed 300  
\$2295

**1971 Torino 2-dr. hardtop** \$2395  
V-8, Automatic, Factory Air. Min. Allowed 300  
\$2095

**1969 Ford 1/2 Ton Pick-up** \$1795  
V-8, Automatic. Min. Allowed 300  
\$1495

**1968 Chevrolet Impala 4-dr.** \$1195  
V-8, Automatic, One Owner, Real Clean. Min. Allowed 300  
\$895

**1972 Vega 2-dr.** \$1995  
Like New. Very Economical. Min. Allowed 300  
\$1695

**1970 Ford 1/2 Ton Pick-up** \$2095  
V-8, Overdrive. Min. Allowed 300  
\$1795

This is only a partial list of over 50 used cars and trucks in stock. We have bargain prices on all of them. So come on in and deal with us today!

Open Monday thru Friday, 8:30 a.m. til 9 p.m., and All Day Saturday.  
SALE BEGINS 8:30 A.M. JAN. 25, 1973

Immediate  
Delivery  
CHELSEA



**PALMER FORD**

Since April, 1912



475-1301





Mrs. Bill R. Bevins

## Nancy K. Picklesimer, Bill Bevins Exchange Vows at Baptist Church

Nancy Katinka Picklesimer became the bride of Bill R. Bevins in wedding ceremonies Saturday, Jan. 20, at the Chelsea Baptist church.

She is the daughter of Mr. and Mrs. Mitchell Picklesimer, 419 S. Main. The bridegroom is the son of Mrs. James B. Bevins and the late Mr. Bevins of Chillicothe, O. The bride was given in marriage by her father.

The 2 p.m. ceremony, performed by the Rev. James Stacy, included vocal selections by Jan Hillebrands of Ann Arbor who sang "More," "The Wedding Song," and "Whither Thou Goest." Mrs. Charlotte Aldrich provided organ music.

The bride wore a floor-length gown of white velvet styled with long mutton sleeves and a sheath skirt which terminated in a sweeping chapel train. A camelot cap secured the fingertip veil. The gown and veil were designed and sewn by the bride. She carried a bouquet of white sweetheart roses and white stephanotis.

Joyce McGibney of Chelsea and Deborah McCloud of Allen Park accompanied the bride as maid of honor and attendant, respectively. Both wore long-sleeved royal blue velvet gowns trimmed with white lace. They carried miniature bouquets of white roses and stephanotis.

Charles Hutchinson of Circleville, O., brother-in-law of the bridegroom, was best man. The bridegroom's brother Bob Bevins of Chillicothe, also attended the bridegroom. Mitchell Picklesimer, brother of the bride, and David Pletcher, both of Chelsea, seated the guests.

### ROGERS CORNERS EXTENSION GROUP

Rogers Corners Extension Study Group met Tuesday, Jan. 16, at the home of Mrs. Vergil Hines with Mrs. Margaret Johnson as co-hostess. There were 18 members and two guests present.

Mrs. Kenneth Haist and Mrs. Carl Heller gave a talk on Binet Hall at Plymouth State Home and Training School. After the talk, the group held a silent auction with the proceeds going to the Binet Hall Fund. The group decided to take a tour of the school, arrangements are being made for trip sometime in February.

The next meeting will be at the home of Mrs. Margaret Johnson on Feb. 21, with Mrs. Mildred Huehl as co-hostess. The lesson plan will be prepared by Mrs. Walter Wolfang and Mrs. Joyce Eiseaman. Their topic will be "Planning and Living." The roll call exercise will be to give an adjective beginning with the same letter as one's first name.

Refreshments were served at the close of the meeting by the hostesses.

### Tape Player Stolen From Parked Van

A thief added a great irritation to John Gilbert's inconvenience, Sunday, when he stole a tape player from Gilbert Dodge van. Gilbert had left the van in Police parking lot between 10 p.m. and midnight after it broke down. When he returned to pick up the vehicle, the tape player, which had been sitting on the dashboard of the unlocked van, was gone. The loss was estimated at \$50.

### Magic Mirror Beauty Salon

Open Tuesday thru Friday  
9 a.m. to 9 p.m.  
Saturday, 8 a.m. to 3 p.m.

PHONE 665-0914

## Club, Social Activities

### MODERN MOTHERS

Modern Mothers Child Study Club met at the home of Mrs. Paul Gorman. Mrs. Joe Rossi was co-hostess. Mrs. Ronald Borders attended as a guest.

Barbara Wenk, a teacher at the high school, discussed the current school strike with the group.

Loretta Pannone from the Village Beauty Salon answered questions on hair care and styles.

The next meeting will be Feb. 13, at the home of Mrs. Edwin Vaughn.

### RUTH CIRCLE

Ruth Circle of the United Methodist church held a regular monthly meeting Jan. 17, at the Social Center. Mrs. Erwin Klumpp, Mrs. Calvin Summers and Mrs. G. A. Barton were hostesses for the dessert luncheon.

Mrs. Virginia Schirmacher was welcomed as a new member. Mrs. Ralph McCalla, chairman, opened the business meeting with a reading. Officers' reports were read and accepted. The bazaar sale netted \$31.

Sarah Circle is putting out a new cookbook. Circle members are to send in their recipes at once.

The group viewed the new set of stainless steel flatware for the church with approval. It was announced that a new evening circle will be organized if there is sufficient interest.

There will be a pot-luck luncheon March 21, for all WSCS Circle members and friends.

The next circle meeting will be Feb. 21, at the church. Mrs. Clark Bushnell, Mrs. George Knoll and Mrs. Carl Schlosser will be hostesses. Miss Marjorie North will conduct the program.

### CHILD STUDY CLUB

Members of the Chelsea Child Study Club met Tuesday evening at the new home of Mrs. Gerald Giffin. Guests were Mrs. Robert Smith, Miss Tracy Cattell, Miss Kelli Borton, Miss Mary Noah and Mrs. Charles Popovich.

Mrs. Popovich presented "A Stitch in Time" showing how to do alterations on clothing at the seam, zipper, waist and shoulder, and adding helpful hints from her own experience.

Mrs. Weldon Harbaugh, was welcomed to the club as a new active member and Mrs. Ralph Owings was added to the waiting list.

Mrs. Thomas Dmoch and Mrs. Charles Thomas served dessert. The next meeting will be held Feb. 13, at the Chelsea Medical Clinic with Dr. William Hawks presenting the program entitled "The Eyes Have It."

### KINDER KLUB

The Jan. 23 meeting of Kinder Klub was held at Sylvan Town Hall where a "white elephant" sale took place after the meeting. Proceeds of the sale will go to Plymouth State Home, Binet Hall.

Mrs. Nadine Koch, Mrs. Carol Marshall and Mrs. Memurie Walters were co-hostesses for the evening. Guests were Mrs. Mary Messner, Mrs. Cynthia Bear, and Mrs. Judy Farley. Mrs. Jean Hafner was welcomed as a new member.

Barbara Wenk, on behalf of the Chelsea High school teachers, spoke to the group on the teachers' strike.

Members of the Kinder Klub expressed their appreciation to everyone who made the "white elephant" sale a success.

### PAST NOBLE GRANDS

Past Noble Grand Club of Rebekah Lodge met at the home of Mrs. Lucille Altstaetter on Jan. 23, for a pot-luck supper. The members and two guests enjoyed a bountiful meal. After this, a meeting was called to order by President Loydell Keezer.

Mrs. Dorothy Keezer reported on delivering gifts to Ypsilanti State Hospital. A gift of money was given to Mrs. Flossie Lake in memory of her husband. Nadine Packard, the Junior Past Noble Grand, was introduced and initiated into the club.

New officers for 1973 were elected: Marion Pickell, president; Mrs. Phyllis Harook, vice-president; Mrs. Ida Nixon, treasurer; Mrs. Evelyn Hale, secretary. Mrs. Geer was presented a gift for her term of office. Mrs. Hale won the door prize for the evening.

Special dates were announced: Jan. 29, organizational meeting for Degree; Feb. 3, card party; Feb. 6, Lodge meeting.

A silent auction was chosen for the February meeting. It will be held in the home of Mrs. Packard, Jan. 27, at 7:30 p.m.

### SENIOR CITIZENS

The Senior Citizens January Birthday party pot-luck was held Friday, Jan. 19, at 8:30 p.m.

Birthday members were honored by the 24 members around a table crowned with a pink cake baked by Mrs. Mary Kniss. John Holzoffer on the accordion and the members sang happy birthday. The Senior Citizens song, written by Mrs. Holzoffer, was also sung by the group.

Members played cards after dinner. Chairman for the dinner was Mary Kniss.



Mrs. Lawrence James Gaken

## Mary Lou Slane, Lawrence Gaken Wed Friday at St. Mary Church

Mary Lou Slane, daughter of the late Mr. and Mrs. Albert J. Slane, was given in marriage, Jan. 19, by her brother, Robert D. Ball, to Lawrence James Gaken. The bridegroom is the son of Mr. and Mrs. James Gaken of Pierce St.

The evening ceremony was performed by the Rev. Fr. Philip Dupuis at St. Mary Catholic church. Miss Jane Haselswerdt played the organ while her sister sang, "Turn Around, Look at Me," and "For All We Know."

The bride's gown was Empire style, fashioned out of organza with a lace panel down the front, accented with seed pearls. The high collar and cuffs were lace. The dress had sheer sleeves and a long chapel train. The bride's flowers were red and white roses.

Mrs. James Knott of Chelsea, as matron of honor, wore a long emerald green velvet skirt with a satin sash, and a white blouse which was a gift from the bride. Her veil was held with a satin

bow. She carried three red roses surrounded with baby's breath.

Michael L. Gaken of Chelsea served as his brother's best man. Attending the bride were Miss Patricia Ball, cousin of the bride, Miss Amy Lou Dettling, cousin of the bridegroom, and Mrs. John Perry, sister of the bridegroom. They were dressed in costumes similar to that of the maid of honor.

Serving as ushers were Robert Peterson, Michael Slane, brother of the bride, and John Perry.

Mrs. Robert Ball wore a long dress of white crepe and purple velvet, trimmed in gold. Her corsage was a lavender carnation with white rosebuds. The mother of the bridegroom wore a floor-length dress of forest green accented with gold buttons. Her flowers were yellow sweetheart roses.

While Mrs. Michael Slane served the wedding cake, Miss Sally Gaken served the bridegroom's cake. Miss Annette Gaken poured

## SCHOOL LUNCH MENU

Week of Jan. 29 - Feb. 2

Monday, Jan. 29—Coney Island hot dog, trimmings, buns, corn relish, potato chips, pudding cake, milk.

Tuesday, Jan. 30—Macaroni and cheese, slice of meat, buttered peas and carrots, home-made bread, butter, peach slices, milk.

Wednesday, Jan. 31—Hot beef sandwich, brown gravy, whipped potatoes, bean salad, dish of fruit, coffee cake, milk.

Thursday, Feb. 1—Oven fried chicken, mashed potatoes, country gravy, tomato slice, bread, butter fruit cup, milk.

Friday, Feb. 2—Fish burgers, buns, sauce, buttered green beans, potato sticks, applesauce, cookie, milk.

### Evangelistic Group

#### Meeting Friday Nights

A newly formed evangelistic group, called the Light of the World, has been meeting every Friday night at the Rebekah Hall on Main St.

The group, lead by evangelist Joseph Sheerin, plans to continue its weekly worship of song and prayer. Sheerin explains that the group is involved in a prayer and healing crusade.

"We believe that sometimes sickness is in the mind," says Sheerin. Light of the World is concerned with ministry to the mind, body and soul.

Evangelist Emma Prickell and singing evangelist Joanne Arnett join Sheerin in leading the congregation. Guest evangelist will also come from time to time. Everyone is welcome at the Friday night gospel meetings.

punch and Miss Linda Gaken served coffee. Miss Jackie Schiller had charge of the guest book.

After a reception at the Chelsea Rod and Gun Club, the couple departed for a honeymoon in Canada. They will live at 8855 Argonne Dr., Gregory.



TRINKLE-PIDD: Mr. and Mrs. Charles W. Trinkle of 9831 Trinkle Rd., have announced the engagement of their daughter, Cheryl Jean, to Darrell Lee Pidd, son of Mrs. Milan (Mabel) Frank of 8483 Dexter-Chelsea Rd. and the late Erwin Pidd. The couple plan a July 21 wedding. Both Miss Trinkle and Mr. Pidd are seniors at Deter High school and Mr. Pidd is also engaged in farming.

### PLASTIC IN THE HAYFIELD

Plastic has come to the hayfield in the form of plastic twine. According to farm experts, the new plastic twine is being used to tie bales in California and Arizona where wire had previously been used. They note that plastic twine now eliminates the problems caused by wire which was hard to dispose of and created a health hazard to animals.

### LOSE UGLY FAT OR PAY NOTHING

Start losing weight today OR MONEY BACK. MONADEX is a tiny tablet that will help curb your desire for excess food. Eat less-weight less. Contains no dangerous drugs and will not make you nervous. No strenuous exercise. Change your life... start today. MONADEX costs \$3.00 for a 20 day supply and \$5.00 for twice the amount. Lose ugly fat or your money will be refunded with no questions asked by: CHELSEA DRUG STORE - CHELSEA Mail Orders Filled

## VILLAGE BEAUTY SALON

LORETTA - CINDY - EULA  
CHERYL - JANICE - CAROL

107 N. MAIN

PHONE 475-1671

### OPEN MONDAY THRU SATURDAY

Evenings By Appointment

**FURNITURE  
SALE**

**LAST 3 DAYS**

**SALE ENDS SATURDAY, JAN. 27**

**10% to 50% DISCOUNT ON ALL STOCK**  
(Except a Few Fair Trade Items)

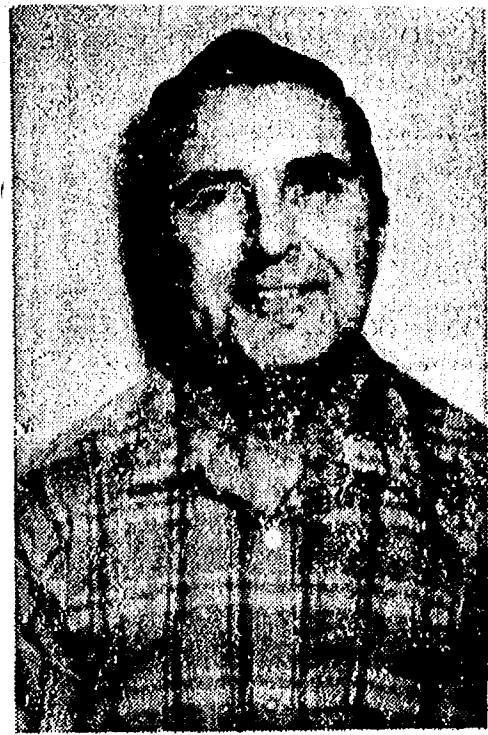
**LIVING ROOM - BEDROOM - DINING ROOM - LAMPS**

**ACCESSORIES - WALL DECOR - CARPETING**

**SAVE 10% ON ALL SPECIAL ORDERS**

**MERKEL**  
HOME FURNISHINGS





THOMAS KRAMER

### Proving Grounds Employee Retires After 25 Years

Thomas A. Kramer of 17500 Waterloo Rd., an employee of the Chrysler Proving Grounds for 22 years, retired Dec. 31. At the age of 60, he left the position as a 563 driver-mechanic, the highest rank in that area at the grounds. He had progressed from the rank of 560.

Kramer was treated to a retirement party at the Manchester Knights of Columbus Hall Friday, Jan. 19. Approximately 100 fellow employees attended to wish Kramer a fond farewell.

Kramer was born in Detroit, and transferred from there to Chelsea in 1950.

### 4-H Clubs

#### STITCH-IN-TIME

The Stitch-in-Time 4H group held another business meeting at Mrs. Gerald Straub's, Jan. 10. We discussed the dress review and we sewed.

Also, Jan. 20, we were busy sewing on our raincoats, smocks, jumpsuits, slacks, and dresses at Mrs. Robert Robbins' house. Denise Robbins, reporter.

#### WATERLOO CLUB

The regular meeting of the Waterloo 4-H club was held Jan. 18, at the school house. Future meeting dates were announced and discussed.

The club voted to donate \$10 to the Binet Hall Fund.

An ice skating party will be held at Beeman's on Feb. 4, from 1 to 4 p.m., if the weather permits.

Family night for the district will be held at 6:30 Feb. 12, at Muu-jith school.

Richard Beeman, reporter.

#### SCISSORSTES

Sue Paplawsky brought treats to the Scissorstes meeting, Tuesday, Jan. 16, Saturday Jan. 27, we will be going to Veteran's Park at 1 p.m. for our ice skating party. Next week is Kelly Borton's birthday, and she is bringing a treat.

#### HASH BROWNS OR MASHED?

In Canada, one would have to consume nearly a half-pound of white potatoes a day to keep up with the average annual consumption rate as noted by the Canada Department of Agriculture.

Subscribe today to The Standard!



STEVEN WORDEN

### Listed in Who's Who Among High Schools

Steven Worden, a senior at Chelsea High school, was recently notified that he is to be featured in the seventh annual edition of Who's Who Among American High School Students. The volume is the largest student award publication in the nation.

Steve is the son of Mr. and Mrs. Wilber H. Worden of 118 Lincoln St. He is active in scouts, football, wrestling, track, the school newspaper and the Youth Center. He is also distinguished as a National Merit Scholarship Semi-Finalist, and he was one of five Chelsea students to be invited to participate in the MSU Distinguished Scholarship Competition.

In addition to having his biography published in the book, Steve will also compete for one of 10 \$1,000 scholarship awards funded by the publishers, and will be invited to participate in the firm's annual "Survey of High Achievers" later in the academic year.

Students from more than 18,000 public, private and parochial high schools throughout the country are recognized for their leadership in academics, athletics, activities or community service in the book. Less than two percent of the junior and senior class students nationwide are awarded this recognition.

Steve plans to attend Michigan State University next year. His major will be zoology.

### CHS Grad in Ferris Band at Inaugural Parade

Chris L. Marzee, the son of Mr. and Mrs. Joseph Marzee of Freer Rd., was part of the Bulldog Marching Band of Ferris State College that represented Michigan in the Presidential Inaugural Parade, Saturday, Jan. 20.

Chris's tuba boomed in one of only 45 bands in the entire parade. The 140-piece organization was the only band from Michigan to travel to the nation's capital for the festivities.

Travel plans called for the student musicians to leave Friday afternoon via chartered plane from the Kent County Airport in Grand Rapids and to return late Sunday night. They stayed at the National 4-H Center in Chevy Chase, Md.

In making the announcement of the Ferris band's selection, Governor William Milliken said, "The Ferris State College Band will serve as an excellent musical representative of the state in the Inaugural Ceremonies. It will do an outstanding job, and we in Michigan are very proud."

The Ferris band has appeared frequently in half-time shows at Detroit Lions football games and these appearances have been seen on television by millions throughout the east and midwest.

### Barn Burns Saturday on Jackson Rd.

A 56-year-old barn, rented by Jack Bradbury from Martin Steinbach, became an inferno fed by Bradbury's store of grain, hay, and farming equipment, Saturday. Two children playing with matches, are suspected of starting the fire.

James Gaken, Chelsea fire chief, and his force of 14 volunteers pumped nearly 7,000 gallons of water on the blaze at 11699 Jackson Rd. Two men and a truck came from Dexter's fire department to join the fight.

The combined effort of the firefighters kept the towering flames from spreading to a nearby shed and garage, but the 60-by-40-foot barn was completely destroyed. The flames were so hot that they melted tar in the siding around the nearby garage.

Jack Bradbury, a member of the county Board of Commissioners, who farms the Steinbach land, lost nearly half of his year's harvest in the fire. He estimates that 5,000 bales of hay, 3,000 bales of straw and 600 bushels of oats, barley and wheat went up in smoke. A field chopper, a grain blower, several elevators and corn crib fencing constituted the rest of his loss. He had stored other crops and equipment at his own place.

Martin Steinbach's tractor was saved when it was pulled from the burning structure, but other Steinbach property could not be salvaged. He had used the barn to store two old boats and a trailer, a large pile of old moldings, and a "fair sized" stack of newly cut and dried lumber, all of which were consumed by the fire.

Firemen were told that children had been playing with matches in the barn before the building burst into flame. Washtenaw county sheriff deputies and state police were at the scene taking statements.

The farm where the barn stood is rented by the Patrick Wade family.

### District Court Proceedings

Week of Jan. 16-22  
In the 14th District Court during the week of Jan. 15-22, Jeffrey Mooney pled guilty to reckless water skiing. He will be sentenced Feb. 2, after a pre-sentencing interview.

Charles LaRoe pled guilty to drunk and disorderly conduct. He was referred to the Alcohol Safety Course and will be sentenced Feb. 21.

Glenn W. Grove pled guilty to drunk and disorderly charges. He was referred to Alcohol Safety instruction and probation. He will be sentenced Feb. 21.

Richard Page pled guilty to careless driving and to falsifying his age on his driver's license. He was fined \$30 and costs on the first charge, and \$21 and costs on the second.

Ralph L. Dye pled guilty to driving under the influence of liquor. He was referred to probation for a pre-sentencing interview. He will be sentenced March 1.

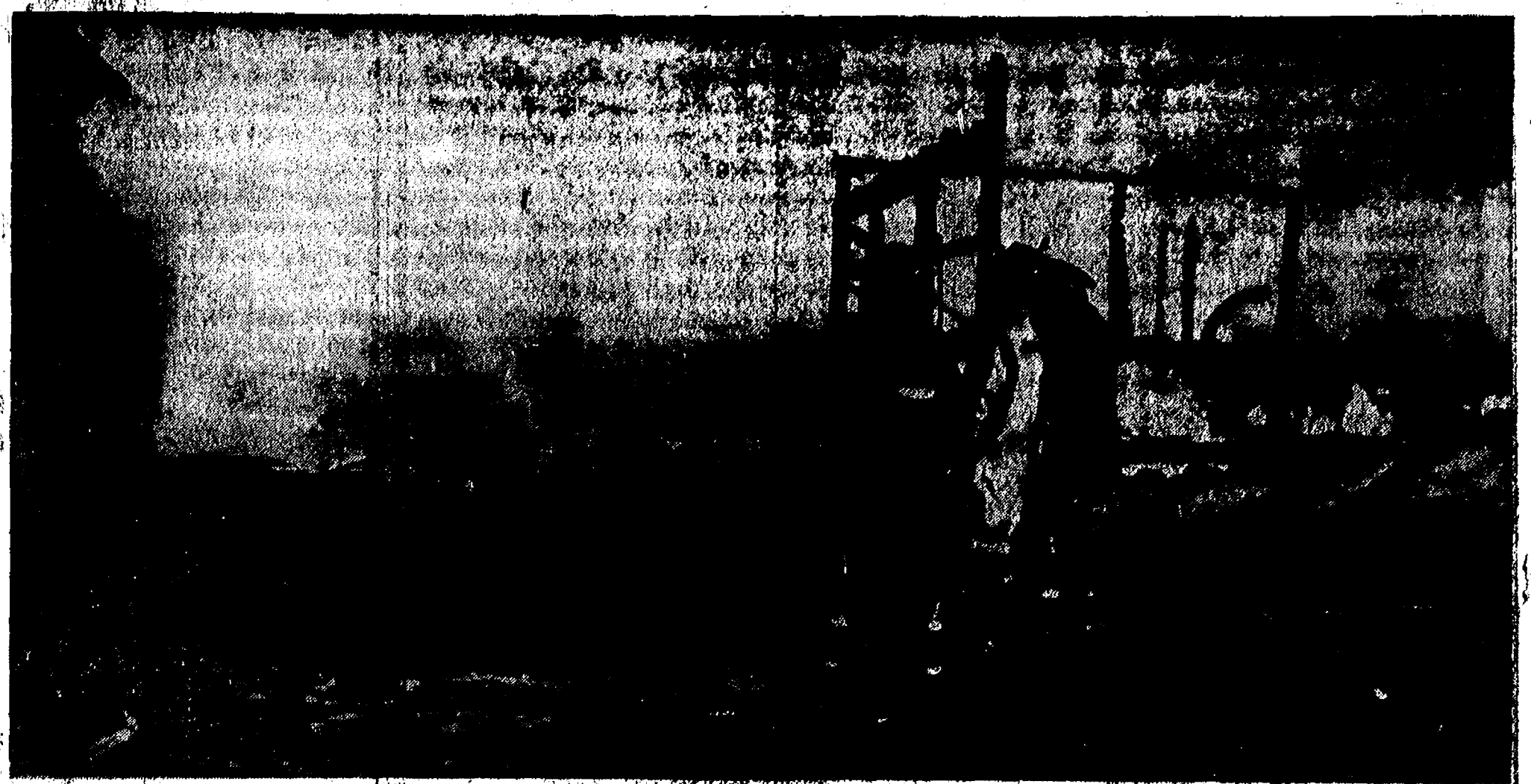
James A. Roles pled guilty to an amended charge of impaired driving. He was sentenced to a fine of \$150 and costs, or 20 days in jail.

Thomas E. Gardonia pled guilty to failing to maintain equipment. He was fined \$21 and costs.

Gary J. Kaminski pled guilty to charges of impaired driving. He was fined \$150 and costs.

Roger Lee Crist pled guilty to failing to pay fines and costs for an August 1971 sentence. He was fined \$75 and costs.

Gary D. Johnson was sentenced \$200 and costs for driving under the influence of liquor.



IN THE FACE OF AN INFERNO: Paul Howard (left) from Dexter, Bob Smith (center) from Chelsea, and Keith Hostler, Dexter Fire Chief turn a hose on to the nearby garage in an effort to keep the flames and heat from igniting the building.

The barn fire was hopelessly beyond control before firemen arrived but they saved all other buildings. The blaze, Saturday afternoon was at the Steinbach farm, 11699 Jackson Rd.

### Christmas Seal Contributions To Date Equal Last Year's

Contributions in Washtenaw county to the traditional Christmas Seal campaign have reached \$26,607 through the first week of January which is 100 percent of last year's total, reports Walter A. Meier, M. D., president of the Michigan Tuberculosis and Respiratory Disease Association.

Over-all the state-wide contributions from 81 counties, excluding the Detroit metropolitan area, have reached \$807,987—or 92 percent of the amount raised the previous year.

Dr. Meier asks Washtenaw county residents who have not yet answered their Christmas Seal appeal letter to please do so. "Al-

though Christmas is over the work of the Christmas Seal Association goes on 365 days-a-year working in the area of tuberculosis control, smoking education, emphysema research, fighting for clean air and providing other important state and local community health programs," he said.

As a part of their commitment to discourage smoking and to fight for the rights of the nonsmokers, the association participated in the National Education Week on Smoking during Jan. 7-13, to encourage the public to become aware of the health hazards of smoking. In addition, doctors, as members of the health team, were encouraged to take a more active role in smoking education. This is an example of just one of the many programs we promote and participate in during a year, said Dr. Meier.

### Results Told in Family Bowling Tournament

The results from the Family Twosome Bowling Tournament, held Nov. 18-Jan. 6, have been released. Winners in the peanut division are: Deneen Marsh, Gerry Klink in the Mother-Daughter with 1,128; Dan and Dolores Marsh in Mother-Son at 1,178; Jane and Joe Verwey in Father-Daughter with 1,165; and Andrew and Andy Fletcher in Father-Son with 1,222.

In the prep division; Mary Northrop and Sue Walton with 1,183; Brian and Jean Lewis with 1,180; Beth Collins and Mac Packard with 1,189; and Jim and Don Alexander with 1,152.

In the junior league: Colleen Collins and Janet Buku with 1,139; John and Noreen Collins with 1,164; Colleen and John Collins with 1,185; ad Mark and Gene Burnett with 1,277.

In the majors, Kathy Sannes and Helen Morgan took the Mother-Daughter area with 1,167. Kathy and Al Sannes won the Father-Daughter contest.

In the Holiday Doubles Tournament Nov. 18-Jan. 6, Mike Foster and John Collins captured the top place in the junior division with a score of 1,224. Dave Alber and Don Messner were next with 1,200.

In the prep division, David Stock and Dean Thompson earned first place with 1,162. The combination of Dean Thompson and Dan McGill was next with 1,159.

Danny Alber and Bill Freeman were the top duo in the peanut division with 1,200. In second place was the team of Jim Stock and Phil Hoffman. They bowled 1,164.

**PAID VACATIONS ON FARMS**  
In Norway, it was recently reported, the government has adopted a policy whereby farmers may now claim up to \$140 for two weeks vacation!

If you didn't eat a total of 321 eggs—either shelled or processed—during the last year, you're behind the average as reported by the United States Department of Agriculture.

## Truck Weight Restrictions

The Washtenaw County Road Commission deems it necessary to preserve the roads under the jurisdiction of this Board and by virtue of the applicable sections of the Michigan Vehicle Code being Act 300, Public Acts of 1949 as amended, we impose springtime axle load restrictions effective at 6 a.m. Thursday, January 23, 1973.

The allowable truck loadings are as follows:

Spacing Between Axles	Concrete	Black-Top & Gravel
9 feet or over	13,500 pounds	11,700 pounds
More than 3 1/2 feet, but less than 9 feet	9,750 pounds	8,450 pounds
When less than 3 1/2 feet the combined weight shall not exceed	13,500 pounds	11,700 pounds
Maximum load on any wheel shall not exceed: (pounds per inch of tire width)	525 pounds	450 pounds

### MAXIMUM TRUCK SPEED

No truck tractor or tractor with trailer, nor any combination of such vehicles with a gross weight loaded or unloaded in excess of 5,000 pounds shall exceed a speed of 50 miles per hour which shall be reduced to 35 miles per hour during the period when reduced loadings are being enforced.

Washtenaw County Road Commission

Want to sell a car? Try a Standard Want Ad!

## Avoid the Winter Blahs!

Now is the time of year for Winter Blahs (barn fatigue and vitamin deficiency).

Condition your herd to springtime fitness with

### BIG H DAIRY TUNE-UP

Give us 10 of your winter-weary cows for just 10 days and we'll help you make them the slickest, sprightliest cows in your herd—(without costing you a penny!)

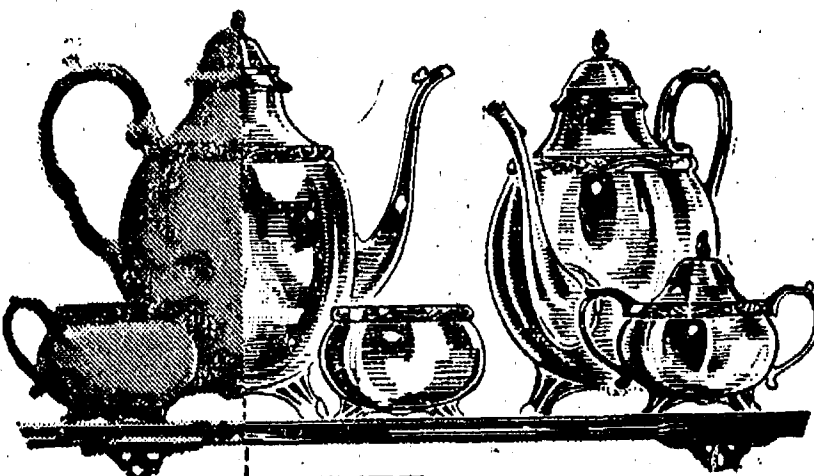
Call or Stop in at Your Dairy Tune-Up Headquarters Now!

## HONEGGER'S & CO., INC.

Chelsea, Mich. Phone 475-1386

P.S.—Remember BIG "H" MINERALS for best results.

## SILVER REPLATING REDUCED 20% LAST 5 DAYS



BEFORE AFTER

Every Item Replated at Sale Prices

Since the value of old silverplated items continues to soar... this is an excellent time to take advantage of these low, low prices to have your worn silverware, antiques and family heirlooms replated like new. These pieces are now more valuable than ever and make wonderful gifts. All work QUADRUPLE SILVERPLATED by our skilled silversmiths and Sale prices apply to ALL pieces.

#### FOR INSTANCE

Article	Reg.	Sale Price
Teapot	\$35.50	\$28.40
Creamer	18.50	14.80
Candlestick (per inch)	2.00	1.60
Sugar bowl	20.50	16.40
Trays (per sq. in.)	.16	.128

#### OUR NEW REPAIR POLICY

\*FREE DENT REMOVAL and straightening on all items we silverplate.  
\*ONLY \$8.95 FOR ANY AND ALL ADDITIONAL REPAIRS, no matter how extensive, on any piece we silverplate. Includes soldering broken handles, legs, knobs, etc. (Only exceptions are for furnishing new parts)

SALE ENDS JANUARY 31  
BRING IN SILVER TODAY!

WINANS JEWELRY

## PRE-INVENTORY SALE

### 50% OFF

Hurry - Sale Ends Feb. 3rd

SHIRTS . . . . . \$3.50 up

SWEATERS . . . . . \$6.00 up

### 20% OFF

SUITS - SPORT COATS . \$44.00 up

A few at 50% off

WINTER JACKETS . . . \$25.00 up

## STRIETER'S MEN'S WEAR

"The Place To Go for Brands You Know"

## LLOYD BRIDGES 1973

## CHEVROLET SALE!

In the winter months there is a big demand for good used cars. Therefore, we are giving top trade-in allowances toward the new Chevrolet of your choice.



Chevrolet Impala Custom Coupe

## LLOYD BRIDGES CHEVROLET



475-1373  
CHELSEA, MICH.

#### SALES HOURS:

Tuesday-Friday . . . . . 8:00 a.m.-6:00 p.m.  
Monday . . . . . 8:00 a.m.-8:30 p.m.  
Saturday . . . . . 8:00 a.m.-5:00 p.m.